



Catalog Number	
Project	Type

Features & Specifications

Application

The staggered strip is an excellent choice for size restrictive architectural coves. Perfect for normal sized coves, showcases and display cases.

Features

Optimized for T8 or T5 lamp performance. Features pressure lock lampholders. Can be surface or pendant mounted, individual or in rows. Numerous KO's for easy installation. 4" lamp overlap to produce shadow free illumination when used in continuous rows.

Construction

Die formed channel.

Electrical System

ETL listed. Suitable for damp locations. Damp location emergency pack must be specified separately. Ballasts are solid-state electronic. Ballasts and lamp holders are replaceable without removing from ceiling. Discrete voltage must be specified for emergency pack options when wired with flex.

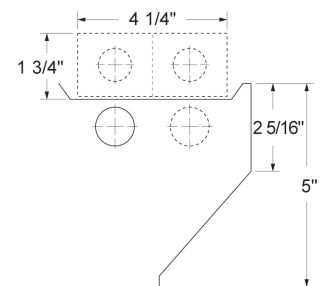
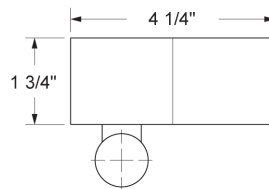
Finish

All reflective surfaces are finished with a high reflectance, lighting fixture white polyester powder.

1LST SERIES ONE LIGHT STAGGERED STRIP



DIMENSIONS



Please contact your Horizon Sales Representative for more information.

*All Dimensions subject to change without notice

Ordering Nomenclature

Ex: (One Light Staggered Strip, 1, F32T8, 36", Multi-Volt =1LST132D)

--	--	--	--	--	--

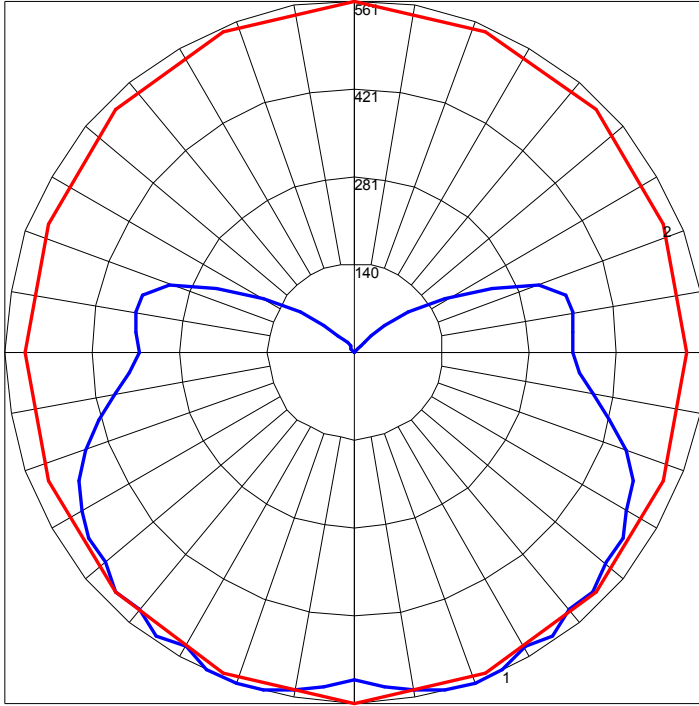
SERIES	NUMBER OF LAMPS	WATTAGE	VOLTAGE	BALLAST FACTOR	OPTIONS
1LST	1	14 - 14W T5, 22" 17 - 17W T8, 24" 21 - 21W, T5, 34" 24 - 24W T5HO, 22" 25 - 25W, T8, 36" 28T5 - 28W T5, 46" 28T8 - 28W T8, 48" 32 - 32W T8, 48" 39 - 39W, T5HO, 34" 48HO - 60W 800mA, 48" 54 - 54W T5HO, 46"	D - Multi-Volt 1 - 120V 2 - 277V 3 - 347V 4 - 480V	BLANK - Normal H - High L - Low	10RS - ≤10% THD, Rapid Start P - Program Start 20 - ≤20% THD EB5 - 500 Lumen T8 Emergency Ballast EB7 - 700 Lumen T8 Emergency Ballast EB14 - 1400 Lumen T8 Emergency Ballast EB30 - 3000 Lumen T8 Emergency Ballast EB5T5 - 500 Lumen T5 Emergency Ballast EB7T5 - 700 Lumen T5 Emergency Ballast EB14T5 - 1400 Lumen T5 Emergency Ballast FBF - Fast-Blow Fuse SBF - Slow-Blow Fuse AC63 - 6', 3/8" dia., Armored Flex Cable SJ6 - 6', 3/8" dia., 16/3 SJ Cord SJ10 - 10', 3/8" dia., 16/3 SJ Cord SJ15 - 15', 3/8" dia., 16/3 SJ Cord PW0 - Palletized without Cartons CD - Continuous Dimming (T8) SD - Step Dimming (T8) CD5 - Continuous Dimming (T5) SD5 - Step Dimming (T5) WOC - 120/347 Volt Sensor WOC1 - 480 Volt Sensor C1 - 6' Cord w/120V Nema Plug 16/3 15A C2 - 6' Cord w/277V Nema Plug 16/3 15A C3 - 10' Cord w/277V Nema Plug 16/3 20A C4 - 6' Cord w/480V Nema Plug 16/3 20A WH34 - Wiring Harness 3-Wire 4-Foot WH44 - Wiring Harness 4-Wire 4-Foot

- WH54 - Wiring Harness 5-Wire 4-Foot
- WH38 - Wiring Harness 3-Wire 8-Foot
- WH48 - Wiring Harness 4-Wire 8-Foot
- WH58 - Wiring Harness 5-Wire 8-Foot
- AR2 - 2' Assymetrical Reflector
- AR3 - 3' Assymetrical Reflector
- AR4 - 4' Assymetrical Reflector

- ADDITIONAL OPTIONS**
- 10JC - (3)S Hooks and 10' Jack Chain Set
 - THE - Tong Hanger, End Mount (2)
 - THS - Tong Hanger, Side Mount (2)
 - G10 - 10' Aircraft Cable w/ 12" Arms (2)
 - G15 - 15' Aircraft Cable w/ 12" Arms (2)
 - G20 - 20' Aircraft Cable w/ 12" Arms (2)

Energy Saving Tip!
Our Occupancy Sensor option instantly turns lights on and off

POLAR GRAPH



Maximum Candela = 561 Located At Horizontal Angle = 90, Vertical Angle = 15
1 - Vertical Plane Through Horizontal Angles (90 - 270) (Through Max. Cd.)
2 - Horizontal Cone Through Vertical Angle (15) (Through Max. Cd.)