



Designer Lensed Strip

Catalog Number	
Project	Type

FEATURES & SPECIFICATIONS

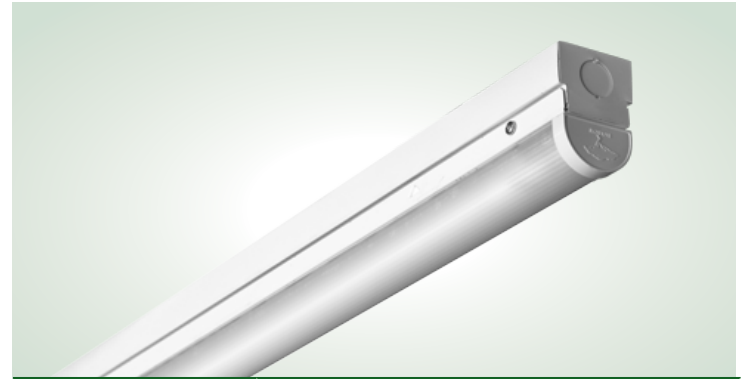
APPLICATION — The DLS Designer Lensed Strip light is designed to be a low maintenance, long life LED fixture with consistent color rendering. The low profile and narrow design makes it a versatile fixture that can fit in a number of surface or suspension mounted applications.

FEATURES — Premium 22 gauge steel housing crimped along sides for extra rigidity and straight alignment. Provided with a glare controlling frosted diffuser lens for an even distribution pattern and exceptional horizontal and vertical performance. Can be surface or suspension mounted. Numerous KO's for easy installation.

FINISH — Housing and components with a Lighting White Polyester type paint which has a UV stabilizer included with a 93% reflectivity. Each fixture is painted to a minimum of 2-3 mil thickness for extra durability.

ELECTRICAL SYSTEM — Long life LED's and high efficiency drivers work together to provide superior performance in an efficient package to deliver optimal performance. LED's available in 5000K 80 CRI, 4000K 80 CRI, and 3000K 80 CRI. Electronic drivers are available in 120/277 volt applications. Standard 0-10V dimming. Class 2 Driver standard. TM-21 projected L70 life is $\geq 60,000$ hours.

LISTINGS — ETL listed. Classified according to the new 1598C safety standard.



SERIES	LENGTH HEIGHT & WIDTH
DLS	47.81" x 2.88" x 2.02" (Dimensions are for the 4' model.)

WARRANTY — The complete luminaire is covered by a 5-year limited warranty.

ORDERING INFORMATION

Choose the bold face options for the appropriate luminaire configuration for your application and enter on the line above each fixture attribute. Accessories may be factory installed, depending on the particular accessory chosen, but still be ordered as a separate line item.

EXAMPLE:

DLS 4 C 3L VWD 1 HOEB AC64

DLS							
SERIES	LENGTH	COLOR TEMP/ CCT	NOMINAL LUMENS	LENS	VOLTAGE	MOUNTING	OPTIONS
DLS	4 = 4'	C = Cool White (5000K, 80 CRI) N = Neutral White (4000K, 80 CRI) W = Warm White (3000K, 80 CRI)	3L = 3,000 Lumens 4L = 4,000 Lumens 5L = 5,000 Lumens 7L = 7,000 Lumens 8L = 8,000 Lumens 9L = 9,000 Lumens 10L = 10,000 Lumens	VWD = Very Wide 120°	1 = Multi-Volt (100-300V)	HNGR4¹ = Hanger Clips w/Adjustable Mounting Rails for existing Canopy Kits (4' Fixture) HNGR8² = Hanger Clips w/Adjustable Mounting Rails for existing Canopy Kits (8' Fixture)	HOEB³ = LED Battery Pack, 90 min DLP = Dimming Leads Pulled WOC = Fixture Mount PIR Motion Sensor On/Off Only WOCLEV⁴ = Fixture Mount PIR Occupancy Sensor with Daylight Harvesting WOCBT⁵ = Bluetooth Mesh Wireless Smart Control EL400FS⁶ = Sensor extension with wire-through for sensor alignment
DLS	8 = 8'	C = Cool White (5000K, 80 CRI) N = Neutral White (4000K, 80 CRI) W = Warm White (3000K, 80 CRI)	8L = 8,000 Lumens 9L = 9,000 Lumens 10L = 10,000 Lumens 12L = 12,000 Lumens 14L = 14,000 Lumens 15L = 15,000 Lumens 18L = 18,000 Lumens 20L = 20,000 Lumens				

ACCESSORIES

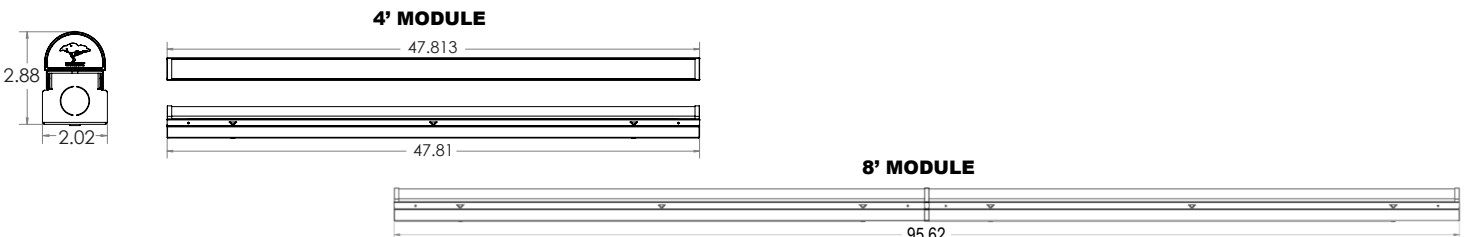
(Order as separate line items)

- G10** 10' Aircraft Cable w/ 12" Arms (Set of 2)
- DLS4WG** 4' Wire Guard
- DLS8WG** 8' Wire Guard
- 10JC** (3)S Hooks and 10' Jack Chain Set
- CPNWxx** Aircraft Cable Pendant - no power feed
- CPWWxx** Aircraft Cable Pendant with power feed wireway
- AC63** 6' x 3X 18AWG, 3/8" dia., Armored Conduit Flex Cable
- AC64³** 6' x 4X 18AWG, 3/8" dia., Armored Conduit Flex Cable
- SJ6** 6', 3/8" dia., 16/3 SJ Cord
- C1** 6' Cord w/120V Nema Plug 16/3 15A
- C2** 6' Cord w/277V Nema Plug 16/3 15A

NOTES

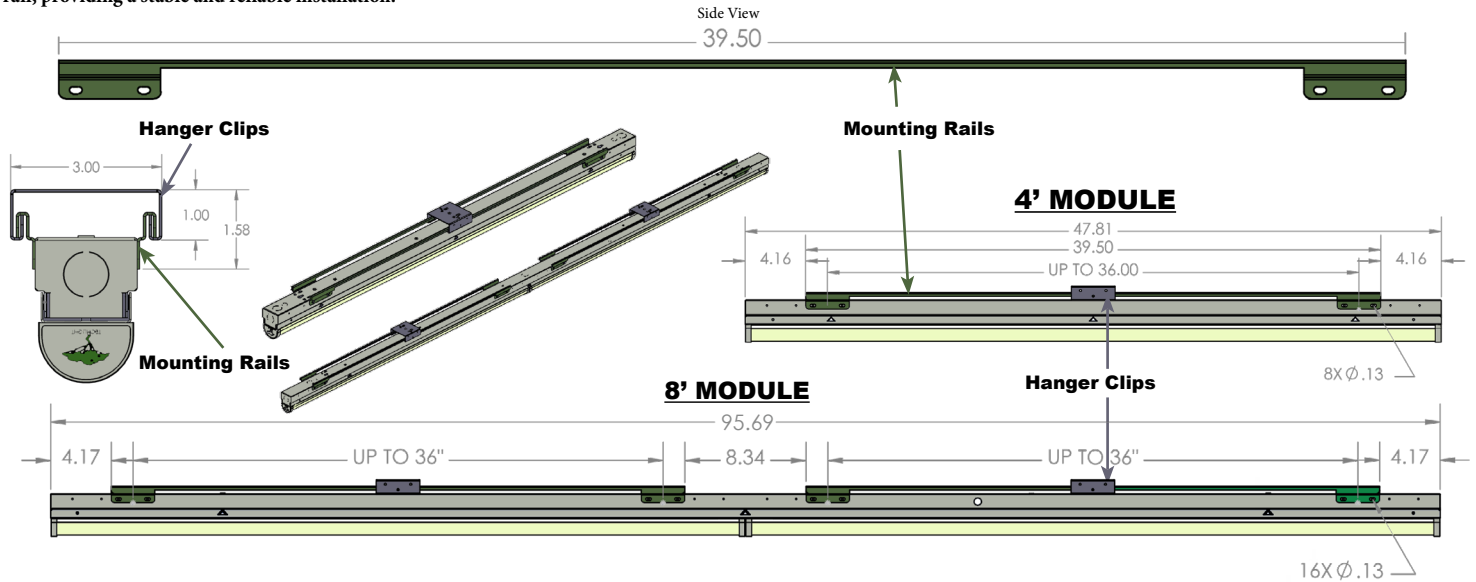
- 1 = Comes with (2) long mounting rails attached at factory, (2) short connector rails plus screw hardware.
- 2 = Comes with (4) long mounting rails attached at factory, (4) short connector rails plus screw hardware.
- 3 = AC64 must be used with HOEB if AC is required.
- 4 = PIR Occupancy Sensor Input voltage 120-347V
- 5 = Bluetooth Mesh Input voltage 120-277V
- 6 = Must be ordered as a separate line item, and along with one of the WOC options.

FIXTURE DIMENSIONS



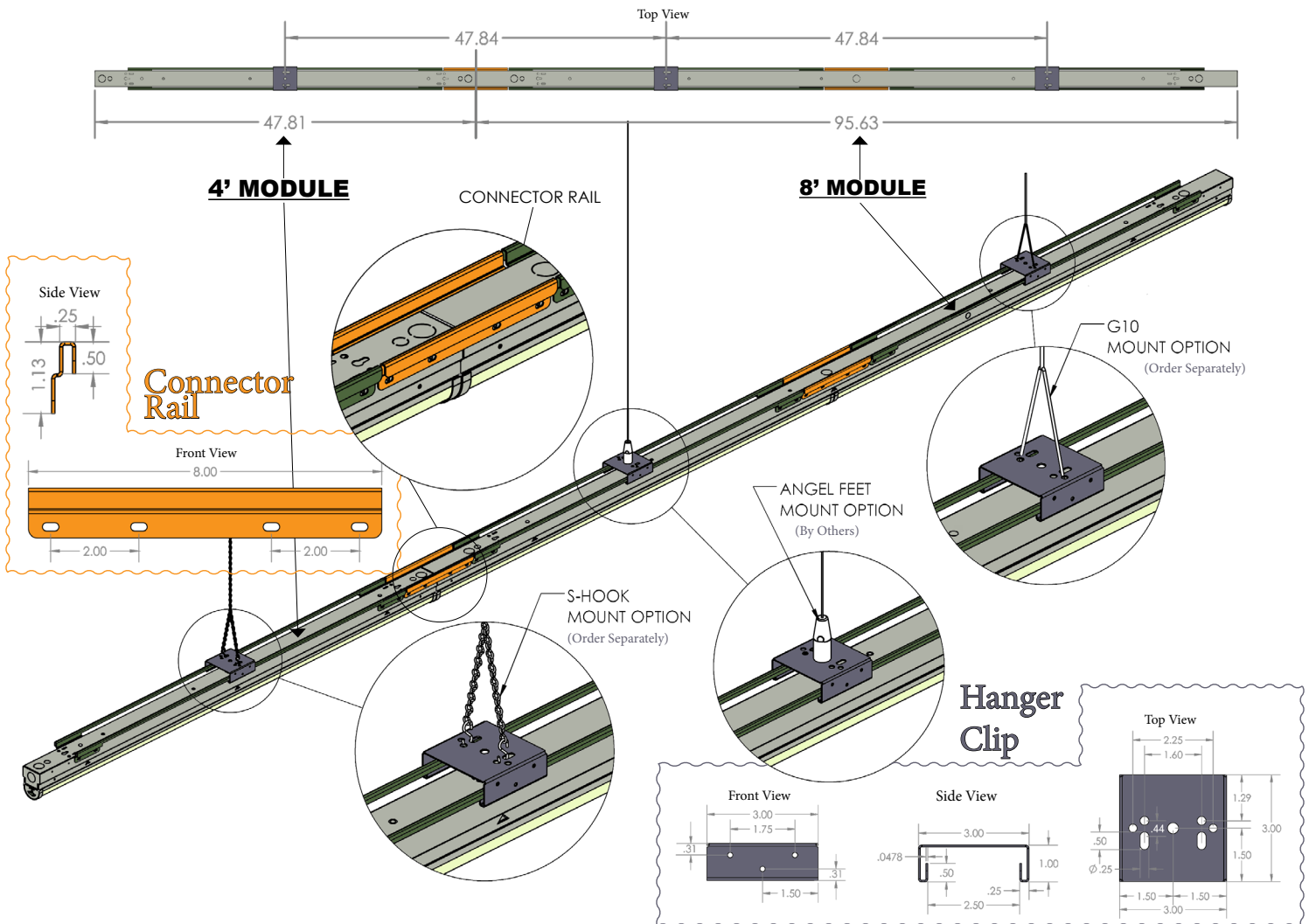
HANGER (HNGR) OPTION ADJUSTABLE MOUNTING RAIL DIMENSIONS

Our HNGR Adjustable Mounting Option, is the perfect solution for effortless retrofitting. The rails are expertly designed to adapt to existing ceiling mounting points, ensuring a seamless integration with your space. The DLS fixture attachments offer ease of adjustment, allowing you to tailor the positioning to your exact needs. Once set, they can be securely locked in place on the mounting rail, providing a stable and reliable installation.



HANGER (HNGR) OPTION CEILING SUSPENSION

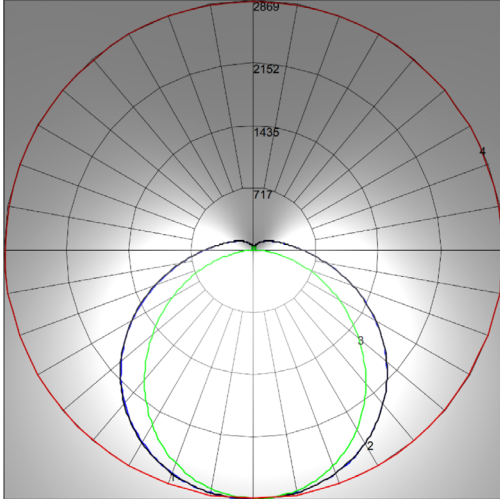
Designed for flexibility and ease of use, our HNGR Option is the perfect match for a variety of mounting options, including the G10, Angel Foot mount, and S-Hook systems.



PHOTOMETRIC CHARACTERISTICS

Maximum Candela = 2869.218 Located At Horizontal Angle = 190, Vertical Angle = 1
 # 1 - Vertical Plane Through Horizontal Angles (190 - 10) (Through Max. Cd.)
 # 2 - Vertical Plane Through Horizontal Angles (0 - 180)
 # 3 - Vertical Plane Through Horizontal Angles (90 - 270)
 # 4 - Horizontal Cone Through Vertical Angle (1) (Through Max. Cd.)

POLAR GRAPH



CHARACTERISTICS

Model Number: DLS8_10LVWD
 Length: 8ft
 CIE Type: Direct
 High Lumen Output
 Color Temperature: ANSI BIN 4000K & 5000K, 80CRI Min
 Luminaire Lumens: 10,137 Lumens
 Total Luminaire Watts: 68W
 Ballast Factor: 1.00

LUMINAIRE CHARACTERISTICS

Length	Nominal Lumens	Delivered Lumens		System Wattage	LPW	TM-21 L70 @ 25°C	Amperage Draw			
		4000K	5000K				120V	208V	240V	277V
4 ft	3L	3,105	3,105	20	155.3	≥ 60K	0.17	0.10	0.08	0.07
	4L	4,097	4,097	27	154.0	≥ 60K	0.22	0.13	0.11	0.10
	5L	5,068	5,068	34	149.7	≥ 60K	0.28	0.16	0.14	0.12
	7L	7,062	7,062	43	163.2	≥ 60K	0.36	0.21	0.18	0.16
	8L	8,094	8,094	51	158.2	≥ 60K	0.43	0.25	0.21	0.18
	9L	9,221	9,221	59	157.2	≥ 60K	0.49	0.28	0.24	0.21
8 ft	10L	10,122	10,122	65	155.9	≥ 60K	0.54	0.31	0.27	0.23
	8L	8,195	8,195	53	154.0	≥ 60K	0.44	0.26	0.22	0.19
	9L	9,130	9,130	61	150.4	≥ 60K	0.51	0.29	0.25	0.22
	10L	10,137	10,137	68	149.7	≥ 60K	0.56	0.33	0.28	0.24
	12L	12,015	12,015	73	164.6	≥ 60K	0.61	0.35	0.30	0.26
	14L	14,124	14,124	87	163.2	≥ 60K	0.72	0.42	0.36	0.31
	15L	14,943	14,943	92	162.4	≥ 60K	0.77	0.44	0.38	0.33
	18L	18,442	18,442	117	157.2	≥ 60K	0.98	0.56	0.49	0.42
20L	20,244	20,244	130	155.9	≥ 60K	1.08	0.62	0.54	0.47	



TECHLIGHT
 INNOVATION IN ILLUMINATION

FIXTURE MOUNT SENSOR

The **WOCBT** and **WOCLEV** PIR Fixture Mount Occupancy Sensors offer a comprehensive and user-friendly solution for intelligent lighting control in high and low bay applications. These easy-to-program sensors seamlessly integrate with existing LED fixtures using a standard 1/2" knockout, eliminating the need for complex wiring configurations.

WOCLEV PIR

Both highbay and lowbay lens are provided with sensor. Highbay lens is factory installed as standard. Lowbay lens must be field installed unless otherwise requested.



WOCBT PIR

HOLH 2D model shown with dimming occupancy sensor with bluetooth mesh technology.



ANDROID & IOS APP AVAILABLE FOR BLUETOOTH CONTROLLER



Android



IOS

EL400FS extension with SENSORS

APPLICATION — Sensor extension with wire-through for optimal sensor alignment, avoiding fixture obstructions to ensure a full range of view.

EL400FS - Wire-through motion sensor extension

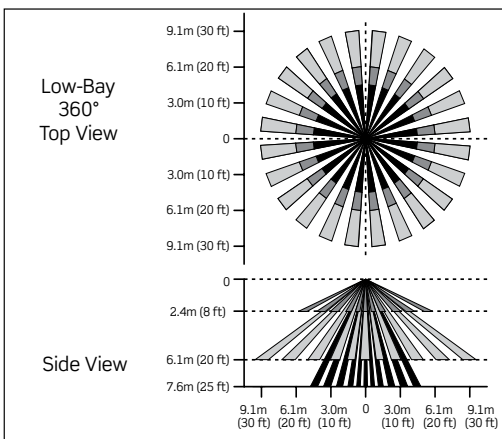
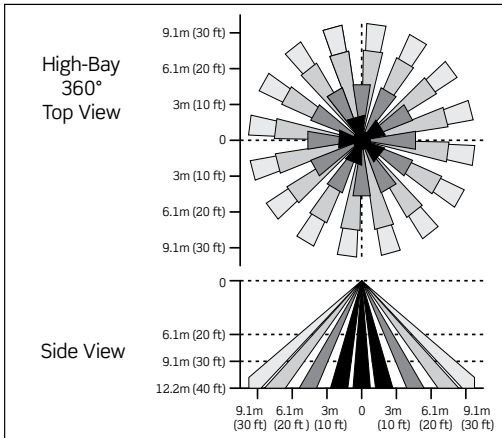


WOCLEV - Fixture Mount PIR Occupancy Sensor

WOCBT - Bluetooth Mesh Wireless Smart Control

Order EL400FS as a separate line item along with one of the sensors above.

WOCLEV PIR LENSES FIELD OF VIEW



KEY FEATURES:

- **1-10V Dimming Control (0-100%):** Precisely adjust light levels based on occupancy and ambient daylight, maximizing energy savings.
- **Integrated Photocell with Patented AutoCal™:** Automatically adapts lighting based on natural light, with set-it-and-forget-it calibration.
- **Interchangeable Lenses (360°):** Optimize detection for high bay (up to 40ft) or low bay environments with included lenses.
- **Universal Compatibility:** Works seamlessly with a wide range of LED fixtures.
- **Cold Storage Ready:** Available in a model suitable for temperatures as low as -40°F.

SIMPLIFIED INSTALLATION:

The **WOCBT** and **WOCLEV** sensors install directly onto your LED fixture through a standard 1/2" knockout using the provided locknut. Factory-connected wiring eliminates complex configurations, ensuring a quick and hassle-free setup.

ADDITIONAL FEATURES:

- **Suitable for standard and cold storage applications.**
- **Visual RGB LED indicators** provide clear device status and simplify troubleshooting.
- **Alternating relay software** extends lamp life.
- **Adjustable time delay (no power required)** for customization.
- **Pre-stripped color-coded wire leads** for efficient connection.
- **Quicksnap feature** for easy installation.
- **H.I.S. (High Inrush Stability) Technology** ensures smooth operation.
- **Zero crossing circuitry** protects electrical components.
- **Robust mechanical latching relay** delivers reliable performance.
- **Relay always returns to close after power loss event** for consistent operation.
- **UL listed for electronic driver loads 120/277V** guarantees safety and compliance.

IDEAL APPLICATIONS:

- Warehouses • Manufacturing Facilities • Gymsnasiums
- Auditoriums • Retail Spaces (with high ceilings)



TECHLIGHT
GROUNDED IN ILLUMINATION