



Catalog Number	
Project	Type

Features & Specifications

Application

This fixture is high quality all-purpose economy industrial with symmetrical reflector. Perfect for simple task and area lighting applications and industrial lighting applications.

Features

Optimized for T8 or T5 lamp performance. Premium housing crimped along sides for extra rigidity and straight alignment. Sturdy embossed reflectors to precisely direct and effectively control light. Features pressure lock lamp holders. Can be installed using various mounting methods and numerous options and accessories are available. Numerous KO's for easy installation.

Construction

Fixture housing, lamp holder brackets, end sections and channel cover constructed of heavy gauge die-formed steel.

Electrical System

ETL listed. Suitable for damp locations. Damp location emergency pack must be specified separately. Ballasts are solid-state electronic. Ballasts and lamp holders are replaceable without removing from ceiling. Discrete voltage must be specified for emergency pack options when wired with flex. Comes standard with ballast disconnects for safe maintenance.

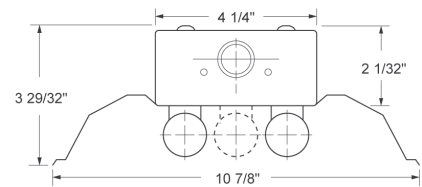
Finish

All reflective surfaces are finished with a high reflectance, lighting fixture white polyester powder.

IS SERIES SHALLOW ECONOMY INDUSTRIAL STRIP



DIMENSIONS



Please contact your Horizon Sales Representative for more information.
All dimensions subject to change without notice.

Ordering Nomenclature

Ex: (Economy Industrial Strip, 2 Lamp, F32T8, 4', Solid Reflector, Multi-Volt =IS232SD)

--	--	--	--	--	--	--

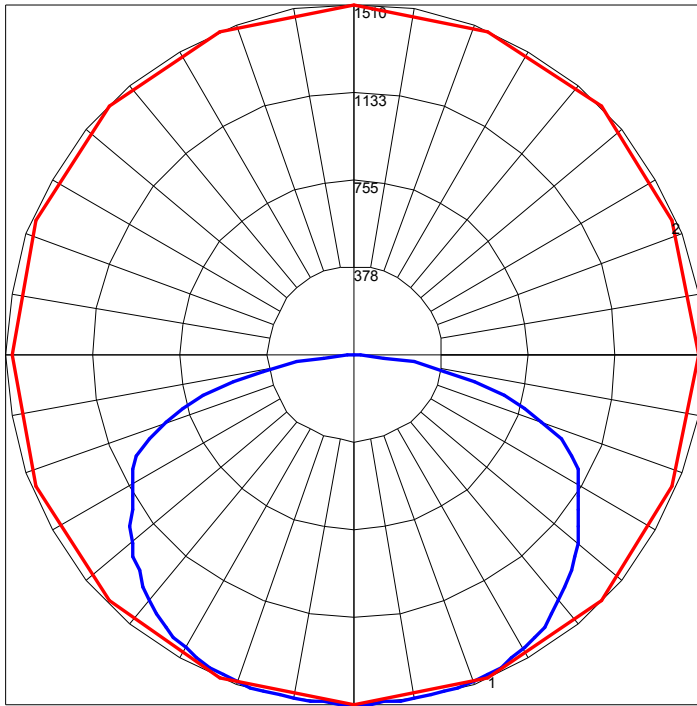
SERIES	NUMBER OF LAMPS	WATTAGE	REFLECTOR	VOLTAGE	BALLAST FACTOR	OPTIONS
IS ISA (Assymetrical) For tandem double-length unit, add suffix T Ex: IST	1	14 - 14W T5, 22"	S - Solid	D - Multi-Volt	BLANK - Normal H - High L - Low	10RS - ≤10% THD, Rapid Start
	2	17 - 17W T8, 24"	U - Uplight	1 - 120V		P - Program Start
		21 - 21W, T5, 34"	SM - Solid Mirro	2 - 277V		20 - ≤20% THD
	2	24 - 24W T5HO, 22"	UM - Mirro Uplight	3 - 347V		EB5 - 500 Lumen T8 Emergency Ballast
		25 - 25W, T8, 36"		4 - 480V	EB7 - 700 Lumen T8 Emergency Ballast	
		28T5 - 28W T5, 46"			EB14 - 1400 Lumen T8 Emergency Ballast	
		28T8 - 28W T8, 48"			EB30 - 3000 Lumen T8 Emergency Ballast	
		32 - 32W T8, 48"			EB5T5 - 500 Lumen T5 Emergency Ballast	
		39 - 39W, T5HO, 34"			EB7T5 - 700 Lumen T5 Emergency Ballast	
		48HO - 60W 800mA, 48"			EB14T5 - 1400 Lumen T5 Emergency Ballast	
		54 - 54W T5HO, 46"			FBF - Fast-Blow Fuse	
		96HO - 86W T8HO, 96"			SBF - Slow-Blow Fuse	
		96T12HO - 110W T12HO, 96"			AC63 - 6', 3/8" dia., Armored Flex Cable	
				SJ6 - 6', 3/8" dia., 16/3 SJ Cord		
				SJ10 - 10', 3/8" dia., 16/3 SJ Cord		
			SJ15 - 15', 3/8" dia., 16/3 SJ Cord			
			PWO - Palletized without Cartons			
			CD - Continuous Dimming (T8)			
			SD - Step Dimming (T8)			
			CD5 - Continuous Dimming (T5)			
			SD5 - Step Dimming (T5)			
			WOC - 120/347 Volt Sensor			
			WOC1 - 480 Volt Sensor			
			C1 - 6' Cord w/120V Nema Plug 16/3 15A			
			C2 - 6' Cord w/277V Nema Plug 16/3 15A			
			C3 - 10' Cord w/277V Nema Plug 16/3 20A			
			C4 - 6' Cord w/480V Nema Plug 16/3 20A			
			WH34-Wiring Harness 3-Wire 4-Foot			
			WH44-Wiring Harness 4-Wire 4-Foot			

ADDITIONAL OPTIONS

WH54- Wiring Harness 5-Wire 4-Foot	THS - Tong Hanger, Side Mount (2)
WH38- Wiring Harness 3-Wire 8-Foot	G10 - 10' Aircraft Cable w/ 12" Arms (2)
WH48- Wiring Harness 4-Wire 8-Foot	G15 - 15' Aircraft Cable w/ 12" Arms (2)
WH58- Wiring Harness 5-Wire 8-Foot	G20 - 20' Aircraft Cable w/ 12" Arms (2)
ISWG4 - 4' Wire Guard	
10JC - (3)S Hooks and 10' Jack Chain Set	
THE - Tong Hanger, End Mount (2)	

Energy Saving Tip!
Our Occupancy Sensor option instantly turns lights on and off

POLAR GRAPH



Maximum Candela = 1510 Located At Horizontal Angle = 90, Vertical Angle = 7.5
1 - Vertical Plane Through Horizontal Angles (90 - 270) (Through Max. Cd.)
2 - Horizontal Cone Through Vertical Angle (7.5) (Through Max. Cd.)