



KTN-S SERIES

Katen-Small LED Area Light

Catalog Number	
Project	Type

FEATURES & SPECIFICATIONS

APPLICATION — The Katen Series of high output LED luminaires are designed for new outdoor lighting and to be a replacement for HID area lights. A compact, one-piece die cast housing, saving costs versus models that are extruded or cast and require additional parts. The heat sink is included in the actual casting, further minimizing the need for additional parts. Standard Arm Mount features an integral arm, increasing strength and simplifying installation. Each fixture can accommodate an optional twist-lock photocontrol which allows for further energy savings and an optional PIR sensor allows for security. They are optimal for lighting applications where long life, low maintenance, and consistent color rendering is required. The high lumen output allows the fixture to be used for parking, restaurant, quick service, shopping centers, or general area lighting applications. All KTN optics are Full Cutoff design. The new KTN-S LED Area Light delivers maximum value by providing significant energy savings, long life and outstanding photometric performance at an affordable price. The KTN delivers 8,000 to 19,000 nominal lumens.

FINISH — Standard color available: Bronze, Black, White, Green, and Silver. Heavy-duty housing is constructed of cast aluminum with corrosion resistant powder coat finish.

MOUNTING — Available with several or multiple unique mountings, specifically designed to provide one-for-one, and in some cases two-for-one, solutions for replacing existing metal halide or high pressure sodium lighting. Features an integral universal mounting mechanism that allows the luminaire to be mounted on most existing drill hole patterns. This "no-drill" solution provides significant labor savings. An easy-access door on the bottom of mounting arm allows for wiring without opening the electrical compartment. A mast arm adaptor, adjustable integral slipfitter and other mounting configurations are available.



SERIES	LENGTH / WIDTH / HEIGHT
KTN-S	10.4" x 2.3" x 17.6"

ELECTRICAL SYSTEM — Available in up to a 19,000 nominal lumens in most optical distributions with either 3000K Warm White, 4000K Neutral White or 5000K Cool White color temperatures. Universal input voltage 120-277Vac, 50/60Hz; 347/480Vac. Operating temperature range -40°C to 40° C.

WARRANTY — The complete luminaire is covered by a 5-year limited warranty.

ORDERING INFORMATION

Choose the bold face options for the appropriate luminaire configuration for your application and enter on the line above each fixture attribute. Accessories may be factory installed, depending on the particular accessory chosen, but still be ordered as a separate line item.

EXAMPLE:

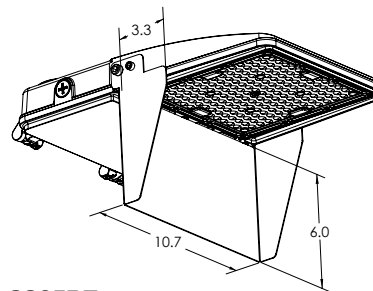
KTN-S C 19L T3 1 BZ

KTN-S							
SERIES	CCT	WATTAGE/NOMINAL LUMENS	OPTIC	VOLTAGE	OPTIC ROTATION	FINISH	OPTIONS
KTN-S	W = 3000K N = 4000K C = 5000K	8L = 56 watt, 8,000 lumens 10L = 74 watt, 10,000 lumens 13L = 98 watt, 13,000 lumens 15L = 115 watt, 15,000 lumens 19L = 148 watt, 19,000 lumens	T3 = Type 3 T4 = Type 4 T5 = Type 5	1 = 120-277V ² 2 = 347 - 480V ³	L = Left Rotated Optics R = Right Rotated Optics (Leave Blank for standard optics)	BZ = Bronze BK = Black WH = White GR = Green SLV = Silver	PCR7 = 7-Pin Twist-Lock Photocell receptacle ANSIC136.41 with Shorting Cap IMS⁴ = Fixture Mount Passive Infrared Motion Sensor (IMS Lenses Below, Ordered Separately) TLWSFSP-L3⁵ = 360° lens, maximum coverage 40' diameter from 20' height (IMS) TLWSFSP-L7⁵ = 360° lens, maximum coverage 100' diameter from 40' height (IMS) HOEB⁶ = Battery Back Up, 90 minutes

ACCESSORIES (Order as separate line items)

- TLWSFSIR-100** Remote Handheld Sensor Configuration Tool for IMS
- PC2** 347-480V Twist-Lock Photocell
- PC7** Multi-Tap (105-285V) Twist Lock Photocell
- KTN 4RA** 4" Round Pole Adapter
- KTN 5RA** 5" Round Pole Adapter
- KTN 2AF** Slip Fitter
- KTN ARM** Arm
- KTN B25** Adjustable Arm
- KTN B15** Trunnion Mount
- S265BZ** House Side Shield for 8L - 19L
- PSJ163-600** 16 Gauge 3 Strand Lead Wire (color coded)

DIMENSIONS



S265BZ
House Side Shield for
8L - 19L

NOTES

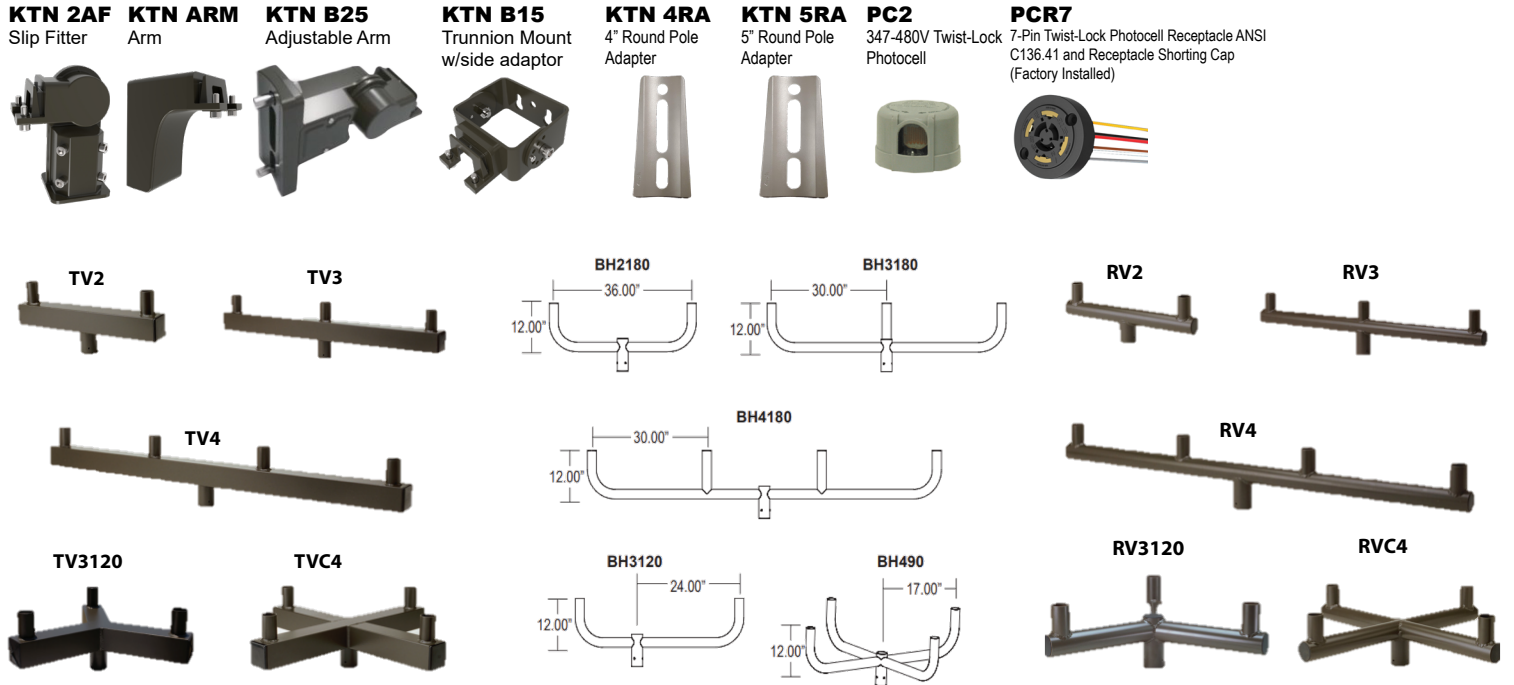
- 1 = Longer than usual lead times for this option. Consult factory.
- 2 = Built-in 10kA Surge Protection. Different ratings are available.
- 3 = Longer than usual lead times for this option in 8L and 19L. Consult factory.
- 4 = TLWSFSP-L3 or L7 Lens must be ordered along with this sensor
- 5 = Photo control shield available upon request. Len's must be ordered with IMS option.
- 6 = HOEB option cannot be ordered along with the IMS option.

System Wattage	L70 @ 25°C	Amperage Draw					
		120V	208V	240V	277V	347V	480V
56W	>50K Hrs.	0.5	0.3	0.2	0.2	0.2	0.1
74W	>50K Hrs.	0.6	0.4	0.3	0.3	0.2	0.2
98W	>50K Hrs.	0.8	0.5	0.4	0.4	0.3	0.2
115W	>50K Hrs.	1.0	0.6	0.5	0.4	0.3	0.2
148W	>50K Hrs.	1.2	0.7	0.6	0.5	0.4	0.3



KTN-S Katen-Small LED Area Light

Mounting Options/Accessories



FIXTURE MOUNT SENSOR (IMS)

APPLICATION — The sensor is ideal for areas such as parking facilities, gas stations, pedestrian pathways, and warehouses. A choice of four lenses ensures complete coverage for mounting heights up to 40'.

OPERATION — Typically, the sensor ramps lighting On to the selected High mode level when motion is detected and the ambient light level is below the hold off setpoint. After the sensor stops detecting movement and the time delay elapses, lights fade to the Low mode level. If there is no motion during the subsequent cut off time delay, the lights will turn Off. For dusk to dawn control, the integral photocell can switch the lights On and Off based on the ambient light level so that lighting remains on overnight even without motion detection.

FEATURES —

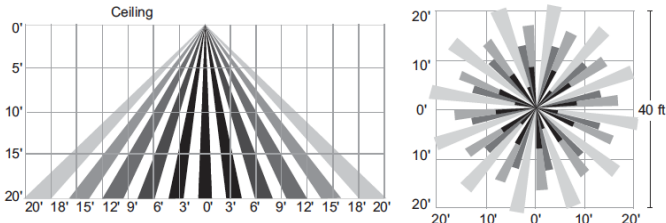
- Provides line voltage On/Off switching
- High and low modes fully adjustable from 0 to 10V
- Time delay from 5 to 30 minutes
- Optional cut off delay
- Adjustable ramp up and fade down times
- Optional daylighting setpoints feature automatic calibration, or permit manual adjustment
- Polycarbonate construction; flame retardant, UV resistant, impact resistant, recyclable
- UL244A and UL508



SENSOR LENSES FIELD OF VIEW

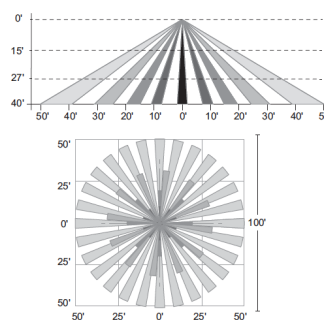
TLWSFSP-L3

360° lens, maximum coverage 40' diameter from 20' height



TLWSFSP-L7

360° lens, maximum coverage 100' diameter from 40' height



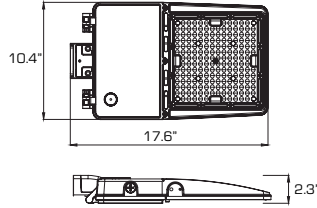
TECHLIGHT
INNOVATION IN ILLUMINATION

KTN-S Katen-Small LED Area Light

AVAILABLE FIXTURE DIMENSIONS

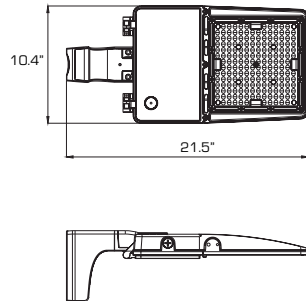
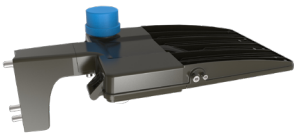
Dimensions shown are for fixture bodies only. Mounting options must be ordered separately. Fixture shown with arm sold separately.

KTN 13L-19L



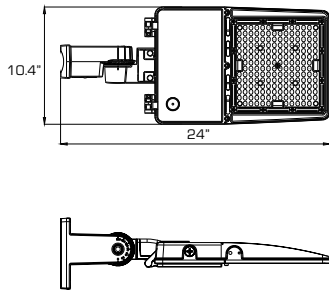
KTN ARM

Fixed Arm Mount



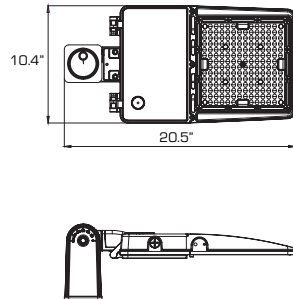
KTN B25

Adjustable Arm Mount



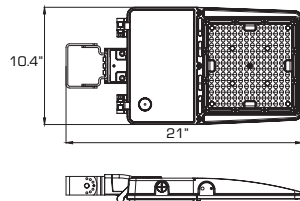
KTN 2AF

Slipfitter Mount



KTN B15

Trunnion Mount



EPA's RATING FOR VARIOUS MOUNTING CONFIGURATIONS [FT²]

Angle	100W - 150W				
	0	20	30	45	60
TV2	1.50	1.90	2.30	2.70	3.10
TV3	2.50	3.20	3.70	4.40	5.00
TV3120	1.70	2.30	2.60	3.10	3.50
TV4	3.60	4.40	5.20	6.10	6.80
TVC4	2.20	2.70	3.10	3.60	3.90

KTN ARM	0.40	n/a	n/a	n/a	n/a
KTN ARM 2180	0.80	n/a	n/a	n/a	n/a
KTN ARM 290	0.70	n/a	n/a	n/a	n/a
KTN ARM 3120	1.10	n/a	n/a	n/a	n/a
KTN ARM 3121	1.10	n/a	n/a	n/a	n/a
KTN ARM 490	1.40	n/a	n/a	n/a	n/a

KTN B25	0.40	0.60	0.80	1.10	1.20
KTN B25 2180	0.80	1.20	1.60	2.10	2.40
KTN B25 290	0.70	0.90	1.10	1.40	1.50
KTN B25 390	1.00	1.30	1.50	1.70	1.90
KTN B25 3120	1.00	1.60	2.00	2.40	2.80
KTN B25 490	1.30	1.80	2.20	2.70	3.00

KTN 2AF	0.40	0.60	0.80	1.10	1.20
----------------	------	------	------	------	------

RV2	0.90	1.40	1.70	2.20	2.60
RV3	1.50	2.20	2.70	3.40	3.90
RV3120	1.20	1.70	2.10	2.50	2.90
RV4	2.10	3.00	3.70	4.60	5.30
RVC4	1.50	2.00	2.40	2.80	3.20

KTN B15	0.40	0.60	0.80	1.00	1.20
----------------	------	------	------	------	------

BH2180	1.00	1.40	1.80	2.30	2.60
BH3180	1.50	2.20	2.70	3.40	4.00
BH3120	1.20	1.80	2.20	2.60	3.00
BH4180	2.20	3.10	3.80	4.80	5.50
BH490	1.60	2.10	2.50	3.00	3.30

KTN-S Katen-Small LED Area Light

LUMINAIRE CHARACTERISTICS

Output ID	Nominal Lumens	TYPE III OPTIC			TYPE IV OPTIC			TYPE V OPTIC		
		Lumens	Wattage	Lm/W	Lumens	Wattage	Lm/W	Lumens	Wattage	Lm/W
		BUG Rating			BUG Rating			BUG Rating		
8L	8,000	7,319	56	131	7,187	56	128	7,246	56	129
		B2-U0-G1			B3-U0-G4			B2-U0-G1		
10L	10,000	9,342	74	126	9,174	74	124	9,248	74	125
		B2-U0-G2			B3-U0-G5			B2-U0-G2		
13L	13,000	12,376	98	126	12,154	98	124	12,253	98	125
		B2-U0-G2			B4-U0-G4			B2-U0-G2		
15L	15,000	14,399	115	125	14,140	115	123	14,255	115	124
		B2-U0-G2			B3-U0-G4			B2-U0-G2		
19L	19,000	18,445	148	125	18,113	148	122	18,260	148	123
		B3-U0-G3			B4-U0-G4			B3-U0-G3		

Output ID	Nominal Lumens	TYPE III OPTIC			TYPE IV OPTIC			TYPE V OPTIC		
		Lumens	Wattage	Lm/W	Lumens	Wattage	Lm/W	Lumens	Wattage	Lm/W
		BUG Rating			BUG Rating			BUG Rating		
8L	8,000	7,713	56	138	7,574	56	135	7,635	56	136
		B2-U0-G1			B3-U0-G4			B2-U0-G1		
10L	10,000	9,844	74	133	9,667	74	131	9,746	74	132
		B2-U0-G2			B3-U0-G5			B2-U0-G2		
13L	13,000	13,042	98	133	12,807	98	131	12,911	98	132
		B2-U0-G2			B4-U0-G4			B2-U0-G2		
15L	15,000	15,173	115	132	14,900	115	130	15,022	115	131
		B2-U0-G2			B4-U0-G5			B2-U0-G2		
19L	19,000	19,436	148	131	19,086	148	129	19,242	148	130
		B3-U0-G3			B4-U0-G4			B3-U0-G3		

Output ID	Nominal Lumens	TYPE III OPTIC			TYPE IV OPTIC			TYPE V OPTIC		
		Lumens	Wattage	Lm/W	Lumens	Wattage	Lm/W	Lumens	Wattage	Lm/W
		BUG Rating			BUG Rating			BUG Rating		
8L	8,000	7,870	56	141	7,728	56	138	7,791	56	139
		B2-U0-G1			B2-U0-G1			B2-U0-G1		
10L	10,000	10,045	74	136	9,864	74	133	9,945	74	134
		B2-U0-G2			B2-U0-G2			B2-U0-G2		
13L	13,000	13,308	98	136	13,068	98	133	13,175	98	134
		B2-U0-G2			B2-U0-G2			B2-U0-G2		
15L	15,000	15,483	115	135	15,204	115	132	15,328	115	133
		B2-U0-G2			B2-U0-G2			B2-U0-G2		
19L	19,000	19,833	148	134	19,476	148	132	19,635	148	133
		B3-U0-G3			B3-U0-G3			B3-U0-G3		

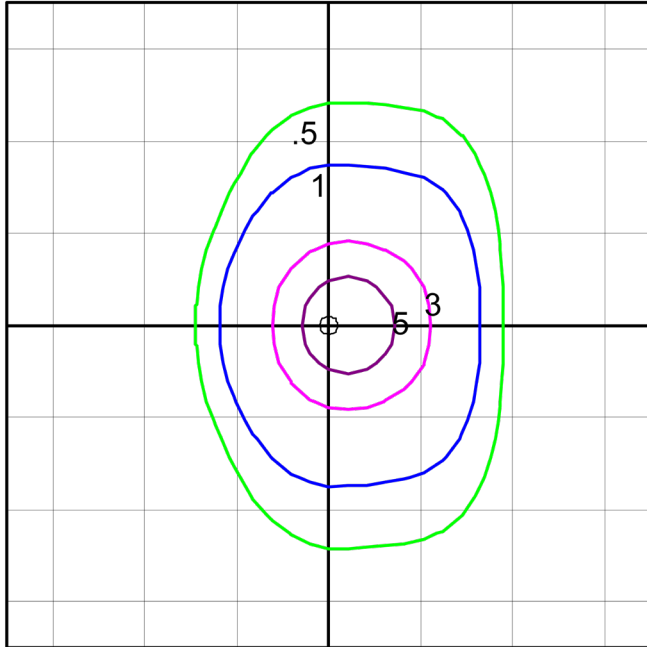


TECHLIGHT
INNOVATION IN ILLUMINATION

KTN-S Katen-Small LED Area Light

PHOTOMETRIC CHARACTERISTICS

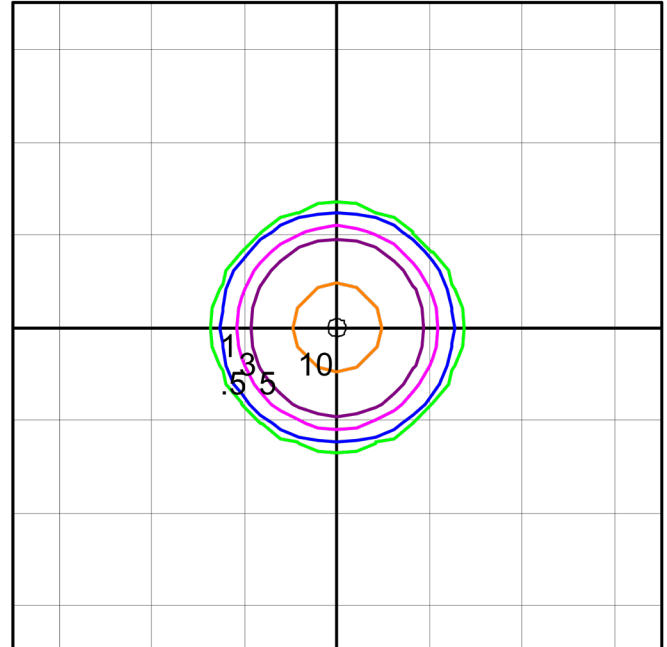
TYPE III OPTIC



www.TECHLIGHT.com
KTN S C 19L T3
Katen LED Parking Roadway Luminaire
LED

Horizontal Footcandles
Scale: 1 Inch = 25 Ft.
Light Loss Factor = 1.00
Lumens Per Lamp = N.A. (absolute photometry)
Luminaire Lumens = 19833
Mounting Height = 25.00 Ft
Maximum Calculated Value = 7.03 Fc
Arrangement: Single

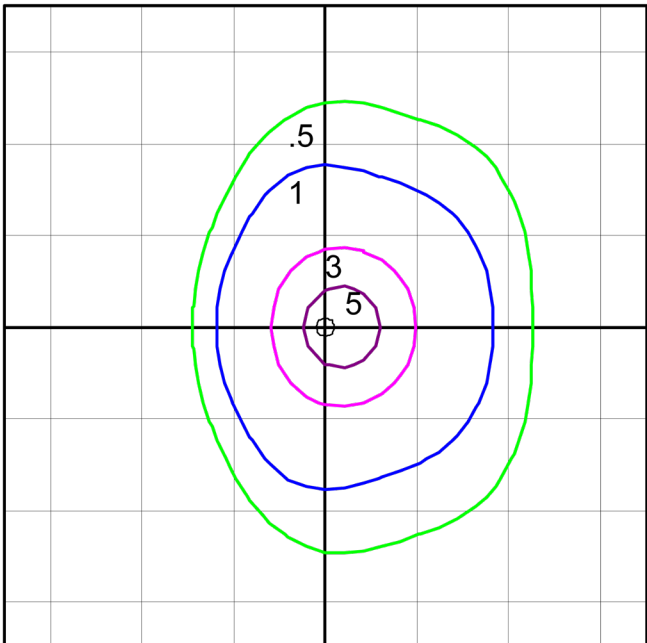
TYPE V OPTIC



www.TECHLIGHT.com
KTN S C 19L T5
Katen LED Parking Roadway Luminaire
LED

Horizontal Footcandles
Scale: 1 Inch = 25 Ft.
Light Loss Factor = 1.00
Lumens Per Lamp = N.A. (absolute photometry)
Luminaire Lumens = 19635
Mounting Height = 25.00 Ft
Maximum Calculated Value = 12.78 Fc
Arrangement: Single

TYPE IV OPTIC



www.TECHLIGHT.com
KTN S C 19L T4
Katen LED Parking Roadway Luminaire
LED

Horizontal Footcandles
Scale: 1 Inch = 25 Ft.
Light Loss Factor = 1.00
Lumens Per Lamp = N.A. (absolute photometry)
Luminaire Lumens = 19476
Mounting Height = 25.00 Ft
Maximum Calculated Value = 6.42 Fc
Arrangement: Single



TECHLIGHT
INNOVATION IN ILLUMINATION