



Catalog Number	
Project	Type

## FEATURES & SPECIFICATIONS

**APPLICATION** — This fixture is designed for industrial, institutional and commercial applications as a direct replacement for traditional HID and fluorescent high bays. With 50,000 hours of life at L70 standard and a 5-year limited warranty the fixture maintenance cost is reduced substantially over time.

**CONSTRUCTION** — Low profile body with matte white sloped side members. Three extruded acrylic lens options available.

**FINISH** — Post painted housing and components with a Lighting White Polyester type paint which has a UV stabilizer included with a 93% reflectivity. Raw steel goes through our custom wash system with a mild solvent and pre treatment "rust inhibitor" before passing through a preheat oven. After the paint is applied the fixture then passes through the cure oven for maximum adhesion. Each fixture is painted to a minimum of 2-3 mil thickness for extra durability.

**OPTICAL SYSTEM** — Techlight/Horizon's state of the art Diffusers set new benchmarks for performance in key metrics such as transmission efficiency for a given level of diffusion or hiding power, beating holographic, surface relief and bulk diffuser techniques. We enable high transmission and a pleasant uniform light at the same time.

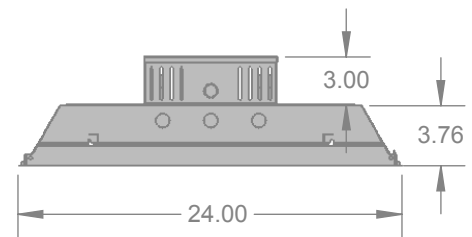
**ELECTRICAL SYSTEM** — Long life LED's and high efficiency drivers work together to provide superior performance in an efficient package to deliver optimal performance. LED's available in 4000K and 5000K with a CRI >82. Electronic drivers are available in 120/277 volt applications. 0-10V dimming standard.

**LISTINGS** — ETL listed. UL Class 2. LM79 and LM80 tested.

**WARRANTY** — The complete luminaire is covered by a 5-year limited warranty.



## Enclosed LED High Bay L2TR24 SERIES



Series	Housing Height	Length & Width
<b>L2TR24</b>	6.76"	48.00" x 24.00"



DesignLights Consortium® Qualified. Not all products are qualified on the DLC QPL. To view our DLC qualified products, please consult the DLC Qualified Products List at [www.designlights.org/search](http://www.designlights.org/search)

## ORDERING INFORMATION

Choose the bold face options for the appropriate luminaire configuration for your application and enter on the line above each fixture attribute. Accessories may be factory installed, depending on the particular accessory chosen, but still be ordered as a separate line item.

Example: **L2TR24 6 H 40 1**

<b>L2TR24</b>						
Series	# of LED Strips	Output	Color Temp/CCT	Voltage	Diffuser	Options
<b>L2TR24</b>	<b>2</b> 2 LED Strips <b>4</b> 4 LED Strips <b>6</b> 6 LED Strips	<b>S</b> Standard <b>H</b> High	<b>40</b> 4000K <b>50</b> 5000K	<b>1</b> Multi-Volt <sup>1</sup>	<b>Blank</b> .100" #12 Acrylic <b>CA</b> Clear Polycarbonate <b>OA</b> Opaque Acrylic	<b>LEB13</b> 1300 Lumen Emergency Ballast <b>FBF</b> Fast-Blow Fuse <b>SBF</b> Slow-Blow Fuse <b>AC63</b> 6', 3/8" dia., Armored Flex Cable

### NOTES

- Actual wattage may differ by ±5% while operating 120/277V ±10%.
- Multi-Volt is 120/277V.

# L2TR24 Enclosed LED High Bay

## Technical Data

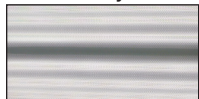
# of LED Strips	Output	Color Temp	Delivered Lumens			System Wattage	L70 @ 25°C (hrs)	Amperage Draw	
			.100" #12 Acrylic	Clear Acrylic	Opaque Acrylic			120V	277V
2	S (Standard)	4000K	7362	8180	6953	63W	>50K	0.53 A	0.23 A
		5000K	7716	8573	7287	63W	>50K	0.53 A	0.23 A
	H (High)	4000K	12938	14376	12220	130W	>50K	1.09 A	0.47 A
		5000K	13560	15067	12807	130W	>50K	1.09 A	0.47 A

# of LED Strips	Output	Color Temp	Delivered Lumens			System Wattage	L70 @ 25°C (hrs)	Amperage Draw	
			.100" #12 Acrylic	Clear Acrylic	Opaque Acrylic			120V	277V
4	S (Standard)	4000K	20300	22556	19173	195W	>50K	1.63 A	0.71 A
		5000K	21276	23640	20094	195W	>50K	1.63 A	0.71 A
	H (High)	4000K	25878	28753	24440	265W	>50K	2.21 A	0.96 A
		5000K	27121	30134	25614	265W	>50K	2.21 A	0.96 A

# of LED Strips	Output	Color Temp	Delivered Lumens			System Wattage	L70 @ 25°C (hrs)	Amperage Draw	
			.100" #12 Acrylic	Clear Acrylic	Opaque Acrylic			120V	277V
6	S (Standard)	4000K	33239	36932	31392	328W	>50K	2.74 A	1.19 A
		5000K	35734	39704	33748	328W	>50K	2.74 A	1.19 A
	H (High)	4000K	38816	43129	36660	397W	>50K	3.31 A	1.44 A
		5000K	40681	45201	38421	397W	>50K	3.31 A	1.44 A

## Lens Options

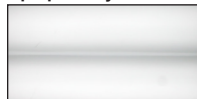
.100" #12 Acrylic



Clear Polycarbonate



Opaque Acrylic



Horizon Linear Lighting  
 2707 Satsuma Drive  
 Dallas, TX, 75229  
 Phone: 214-350-0591, 800-225-0727, Fax: 214-350-9137  
[www.horizonlightingllc.com](http://www.horizonlightingllc.com)

\*\*All dimensions and specifications are subject to change without notice.\*\*