



## LED Sign Lighter

Catalog Number	
Project	Type

### FEATURES & SPECIFICATIONS

**APPLICATION** — The high performance luminaire is designed for retail sign lighting. Areas with limited accessibility due to luminaire location or where heavy pedestrian or vehicle traffic makes maintenance difficult are ideal applications.

**CONSTRUCTION** — Heavy duty single piece die cast aluminum housing for durability. The fixture is sealed from the elements and is wet location rated. The driver is remotely mounted. Up to 8 (eight) individual fixtures may be operated off of a single driver enclosure.

**FINISH** — A corrosion-resistant black E-Coat layer that forms a uniform and all-encompassing protective barrier is applied to the fixtures prior to electrostatically applying a super durable powder coat finish. Standard colors available: Black, Bronze, US Green, White. Custom colors available upon request.

**OPTICAL SYSTEM** — 3 (three) molded polycarbonate vacuum metalized optics designed to work in tandem to efficiently distribute light over the face of a sign with minimal light spillage. Fixtures were designed to be mounted at an average spacing of 6' for uniformity.

**ELECTRICAL SYSTEM** — The Multi-Volt constant current LED driver operates off a voltage input range from 120V-277V (50/60 Hz). A 347V/480V driver option is also available. An internal surge protection device protects the assembly from up to 10,000 kV surge events. For ease of service the driver is remotely to a convenient location with a max remote distance of 100'. 80 CRI LED's are in 4000K and 3000K CCT. Each system comes with a single remote driver enclosure. Each enclosure can hold a maximum of 8 drivers to operate 8 individual fixtures.



SERIES	HEIGHT LENGTH & WIDTH
<b>LBX</b>	4.8" x 12.5" x 4.7"

**MOUNTING** — Standard mounting options available are a straight arm mount, an upswept arm with a 15" rise and a surface mount arm. Custom mounting options are available upon request. Please contact your sales representative for more information.

**LISTINGS** — ETL listed for wet locations. Meets US, Mexico and Canadian safety standards. -40°C to 50°C ambient operation.

### ORDERING INFORMATION

Choose the bold face options for the appropriate luminaire configuration for your application and enter on the line above each fixture attribute. Accessories may be factory installed, depending on the particular accessory chosen, but still be ordered as a separate line item.

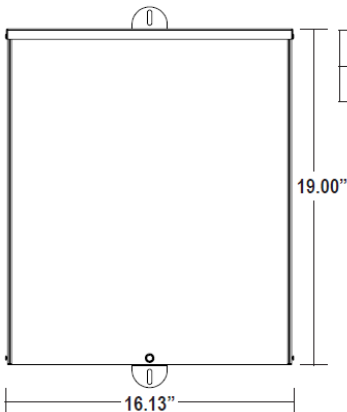
EXAMPLE:

**LBX 4 N 24 S 98 1 D BZ**

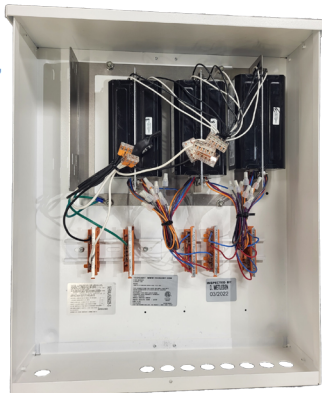
LBX	SERIES	FIXTURE QUANTITY	COLOR TEMP/CCT	SIGN SIZE	MOUNTING ARM	NOMINAL ARM LENGTH	VOLTAGE	ORIENTATION	FINISH <sup>2</sup>
	LBX	<b>1</b> = 1 Fixtures <b>2</b> = 2 Fixtures <b>3</b> = 3 Fixtures <b>4</b> = 4 Fixtures <b>5</b> = 5 Fixtures <b>6</b> = 6 Fixtures <b>7</b> = 7 Fixtures <b>8</b> = 8 Fixtures	<b>N</b> = Neutral White (4000K) <b>W</b> = Warm White (3000K)	<b>6</b> = 6' Wide Sign (1 Fixture) <b>12</b> = 12' Wide Sign (2 Fixtures) <b>18</b> = 18' WIDE SIGN (3 OR 4 FIXTURES) <b>24</b> = 24' WIDE SIGN (4 OR 5 FIXTURES) <b>30</b> = 30' WIDE SIGN (6 FIXTURES) <b>36</b> = 36' WIDE SIGN (6 FIXTURES) <b>42</b> = 42' WIDE SIGN (7 OR 8 FIXTURES) <b>48</b> = 48' WIDE SIGN (8 FIXTURES)	<b>S</b> = Straight Arm <b>O</b> = Offset Arm	<b>51</b> = 51" <b>84</b> = 84" <b>98</b> = 98"	<b>1</b> = Multi-Volt <sup>1</sup> <b>2</b> = 347V/480V	<b>U</b> = Up Facing <b>D</b> = Down Facing	<b>BK</b> = Black <b>BZ</b> = BRONZE <b>GR</b> = US GREEN <b>WH</b> = WHITE <b>SP</b> = SPECIAL <sup>3</sup>

**NOTE:** Fixtures are sold in packages of 1 thru 8 fixtures. Drivers with enclosure and mounting arms included.

### LLBIDE REMOTE DRIVER ENCLOSURE



Housing Height	Depth & Width
19.00"	5.38" x 16.13"



NEMA 3X type enclosure is provided with 3/4" Conduit Entries for incoming/outgoing power.

### ACCESSORIES (Order as separate line items)

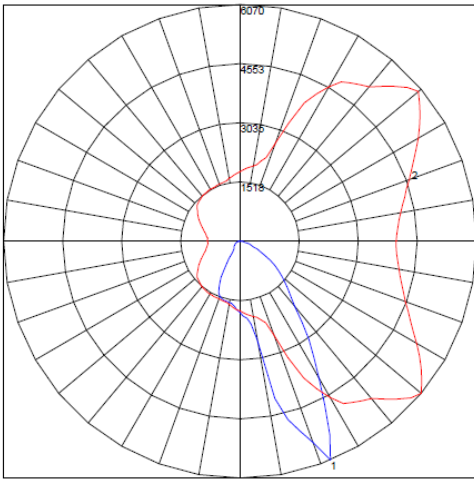
- 132406XX** Interior - Thru Wall Support Square Plate Heavy Duty
- 132408XX** Exterior - Beauty Plate for Regular Arms < 60"
- 132409XX** Exterior - Thru Wall Support Round Plate for Long Arms > 60"

### NOTES

- Auto ranging Multi-Volt power supply from 120V to 277V input.
- Driver enclosure is provided standard with a White finish.
- Custom RAL color matching is available. Contact your Techlight sale representative for additional information.



## PHOTOMETRIC CHARACTERISTICS



Maximum Candela = 8070.13 Located At Horizontal Angle = 320, Vertical Angle = 22.5  
 # 1 - Vertical Plane Through Horizontal Angles (320 - 140) (Through Max. Cd.)  
 # 2 - Horizontal Cone Through Vertical Angle (22.5) (Through Max. Cd.)

### CHARACTERISTICS

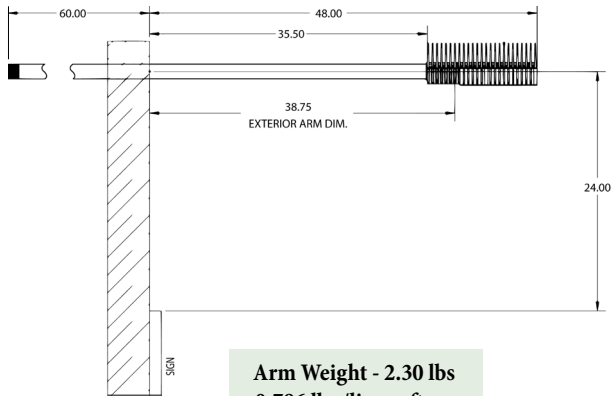
CIE Type: Direct  
 Spacing Criterion: 1.30  
 LED Billboard Luminaire  
 6x LED Cree XHP70B (700 mA)  
 Color Temperature: 4,000 K CRI: 80  
 Luminaire Lumens: 5751  
 Total Luminaire Watts: 55  
 Ballast Factor: 1.00

### ZONAL LUMEN SUMMARY

Zone	Lumens	%Fixt
0-30	2289	39.80%
0-40	3421	59.50%
0-60	5043	87.70%
0-90	5751	100.00%
90-120	0	0.00%
90-130	0	0.00%
90-150	0	0.00%
90-180	0	0.00%
0-180	5751	100.00%

## MOUNTING ACCESSORIES

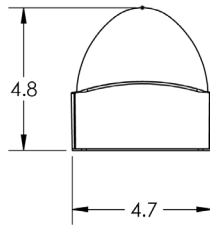
### Straight Mounting Arm (S-98)



**Arm Weight - 2.30 lbs**  
**0.786 lbs /linear ft**  
**EPA - 0.2**

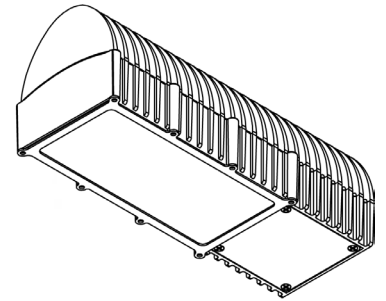
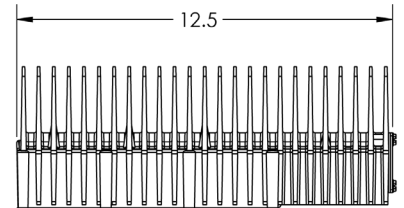
## FIXTURE DIMENSIONS

### End View

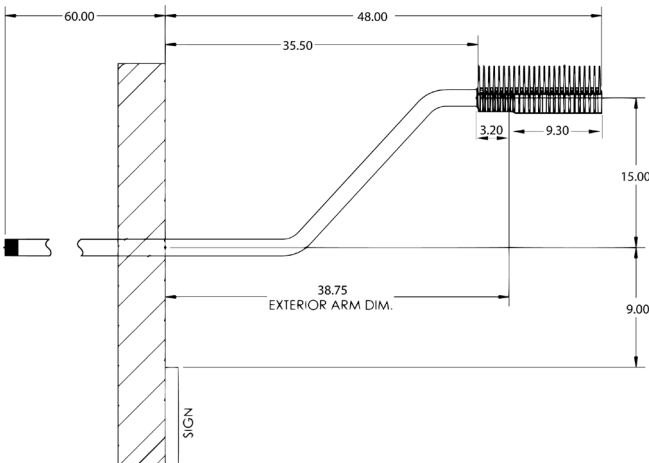


**Fixture Weight - 7.35 lbs**  
**EPA - 0.4**

### Side View



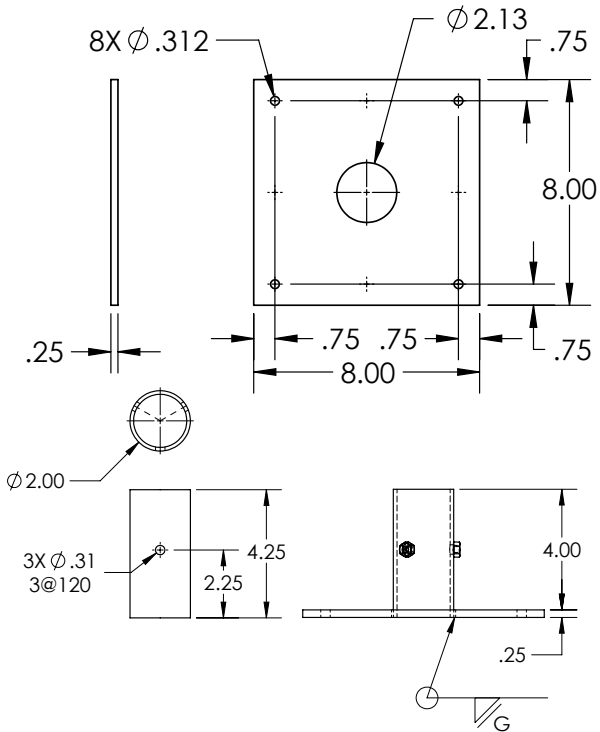
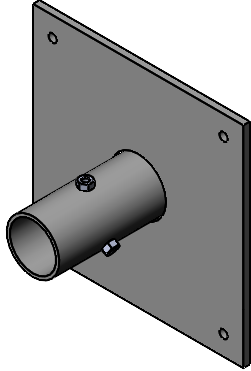
### Offset Mounting Arm (0-98)



**TECHLIGHT**  
 INNOVATION IN ILLUMINATION

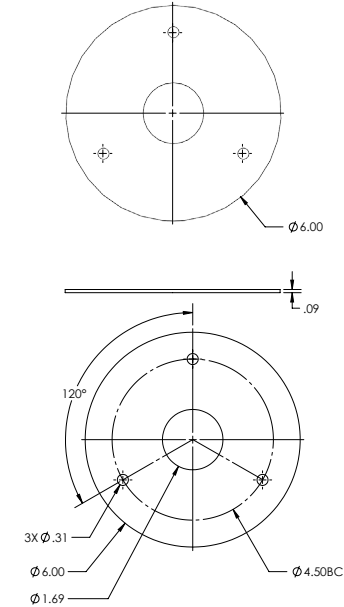
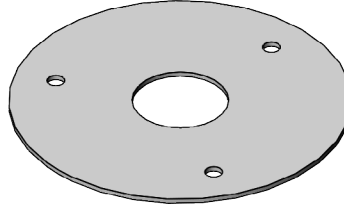
## MOUNTING ACCESSORIES

### Interior Thru Wall Support Square Plate Heavy Duty - 132406XX



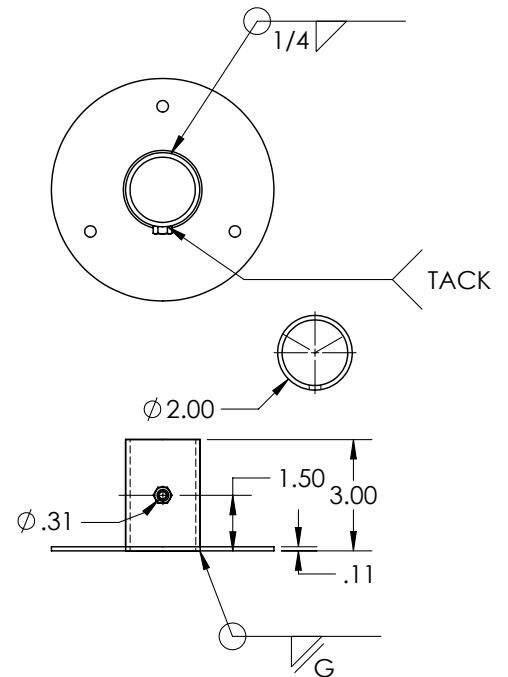
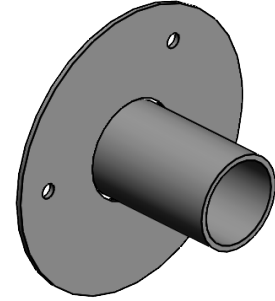
**Interior Thru Wall Plate**

### Exterior Beauty Plate for Regular Arms < 60" - 132408XX



**Exterior Fascia Plate**

### Exterior Thru Wall Support Round Plate for Long Arms > 60" - 132409XX



**Exterior Thru Wall Plate**

