



Catalog Number	
Project	Type

FEATURES & SPECIFICATIONS

APPLICATION — The high lumen output luminaire is designed to be a replacement for HID flood lights. It is optimal for lighting applications where long life, low maintenance, and consistent color rendering is required. Areas with limited accessibility due to fixture location or where heavy pedestrian or vehicle traffic makes maintenance difficult are ideal applications. The high wattage/lumen output allows the fixture to be used for parking, security, quick service, wall wash or general lighting applications.

CONSTRUCTION — The heavy duty housing is constructed of extruded aluminum. The optical assemblies are sealed in place using a silicone gasket for weather tight protection. Modular LED system for ease of maintenance. ETL listed for wet locations (IP64).

FINISH — A Super Durable Polyester powder coat finish is electrostatically applied in our state of the art paint facility. Standard colors available: Black, Bronze, US Green, White. Custom colors available upon request.

OPTICAL SYSTEM — Made with a state of the art UV stabilized acrylic high performance refractive optical assemblies that use high transmittivity materials to achieve precise photometric distributions. Available in Type V Narrow, V Medium and V Wide beam configurations.

ELECTRICAL SYSTEM — Available in up to a 72,000 lumen LED system in 5000K-70 CRI Cool White (+/- 500K) or 4100K-70 CRI Neutral White color temperatures propagated with Philips Lumileds Luxeon MX LED's. Consult factory for high CRI (90+) model availability. Available with 100-300V 50/60 Hz Class II power supply. LED's rated for over 50,000 hours at 25°C ambient temperature. 347V-480V input option available. 0-10V dimming. Built-in surge protection up to 10 KV. Built-in Active PFC Func-

LDFP SERIES

High Lumen Output Defiant LED Power Flood



Shown with optional DEFPFYTENON tenon adaptor (ordered separately)

SERIES	HOUSING HEIGHT	LENGTH & WIDTH
LDFP	5.52"	18.70" x 18.70" (30K Lumen Unit)

tion >95%/Full load. LED Power Supply conforms to UL8750 standards and is IP65 rated for wet locations.

MOUNTING — Standard mounting option is an included adjustable yoke mount. A tenon mount adaptor is available for mounting on a 2-3/8" OD tenon (see Accessories). Additional mounting options may be available for custom applications.

LISTINGS — LED Power Supply listed for wet locations (IP65). LED bricks ETL listed for wet locations (IP64). Meets US and Canadian safety standards. -40°C to 50°C ambient operation. RoHS Compliant.

ORDERING INFORMATION

Choose the bold face options for the appropriate luminaire configuration for your application and enter on the line above each fixture attribute. Accessories may be factory installed, depending on the particular accessory chosen, but still be ordered as a separate line item.

EXAMPLE:

LDFP C 72L T5N 1 BZ

LDFP					
SERIES	COLOR TEMP	NOMINAL LUMENS	OPTICS	VOLTAGE	FINISH
	C = Cool White (5000K) N = Neutral White (4100K)	12L = 12000 Lumens 15L = 15000 Lumens 24L = 24000 Lumens 30L = 30000 Lumens 48L = 48000 Lumens 72L = 72000 Lumens	T5N = Type V Narrow T5M = Type V Medium T5W = Type V Wide	1 = Multi-Volt ¹ 2 = 347-480V	BZ = Bronze BK = Black GR = US Green WH = White SP = Special ²

ACCESSORIES (Order as separate line items)

DEFPFYTENON Tenon Mount Adaptor for 2-3/8" OD Tenon

NOTES

1= Multi-Volt is an auto ranging power supply from 100V to 300V input.

2= Custom RAL color matching is available. Contact your sales representative for additional info.

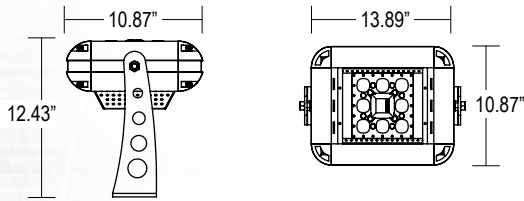


LDFP High Lumen Output Defiant LED Power Flood

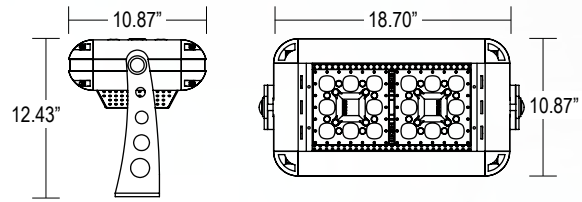
AVAILABLE FIXTURE DIMENSIONS

Dimensions shown are for fixture bodies only. Mounting options must be ordered separately.

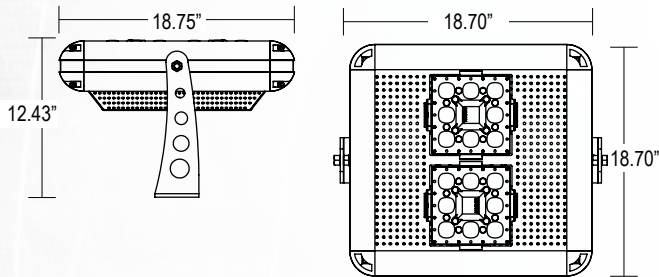
Dimensions for 12000 Lumen Unit



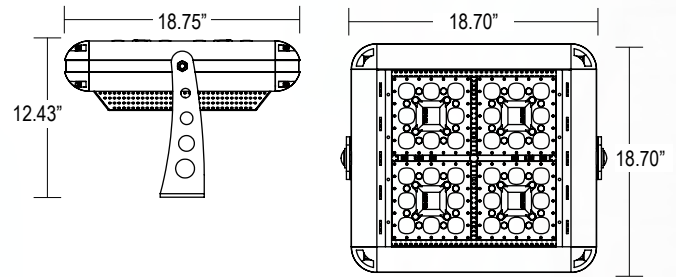
Dimensions for 15000 Lumen Unit



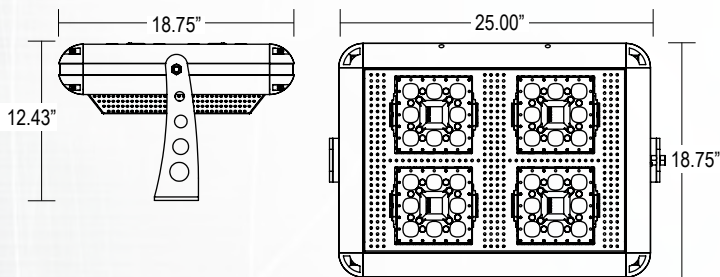
Dimensions for 24000 Lumen Unit



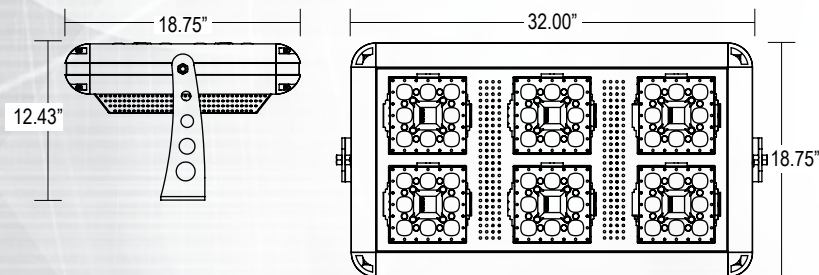
Dimensions for 30000 Lumen Unit



Dimensions for 48000 Lumen Unit



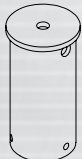
Dimensions for 72000 Lumen Unit



MOUNTING ACCESSORIES

DEFPFYTENON

Tenon Mount Adaptor for 2-3/8" OD Tenon



LDFP High Lumen Output Defiant LED Power Flood

LUMINAIRE CHARACTERISTICS

Cool White

Output ID	Nominal Lumens	Delivered Lumens			System Wattage	L70 @ 25°C	Amperage Draw					
		TYPE 5N	TYPE 5M	TYPE 5W			120V	208V	240V	277V	347V	480V
12L	12,000	11110	11825	11880	108	>50K	0.90 A	0.52 A	0.45 A	0.39 A	0.32 A	0.23 A
15L	15,000	14820	15780	15840	140	>50K	1.17 A	0.68 A	0.59 A	0.51 A	0.41 A	0.30 A
24L	24,000	22220	23650	23760	216	>50K	1.80 A	1.04 A	0.90 A	0.78 A	0.63 A	0.45 A
30L	30,000	29640	31560	31680	280	>50K	2.34 A	1.35 A	1.17 A	1.02 A	0.81 A	0.59 A
48L	48,000	44440	47300	47520	432	>50K	3.60 A	2.08 A	1.80 A	1.56 A	1.25 A	0.90 A
72L	72,000	66660	70950	71280	648	>50K	5.40 A	3.12 A	2.70 A	2.34 A	1.87 A	1.35 A

Neutral White

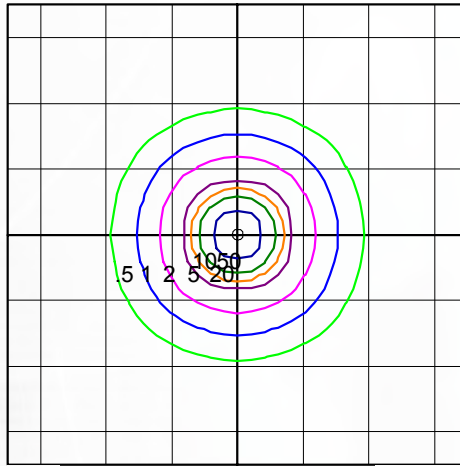
Output ID	Nominal Lumens	Delivered Lumens			System Wattage	L70 @ 25°C	Amperage Draw					
		TYPE 5N	TYPE 5M	TYPE 5W			120V	208V	240V	277V	347V	480V
12L	12,000	10683	11370	11423	108	>50K	0.90 A	0.52 A	0.45 A	0.39 A	0.32 A	0.23 A
15L	15,000	14250	15173	15231	140	>50K	1.17 A	0.68 A	0.59 A	0.51 A	0.41 A	0.30 A
24L	24,000	21365	22740	22846	216	>50K	1.80 A	1.04 A	0.90 A	0.78 A	0.63 A	0.45 A
30L	30,000	28500	30346	30462	280	>50K	2.34 A	1.35 A	1.17 A	1.02 A	0.81 A	0.59 A
48L	48,000	42731	45481	45692	432	>50K	3.60 A	2.08 A	1.80 A	1.56 A	1.25 A	0.90 A
72L	72,000	64096	68221	68538	648	>50K	5.40 A	3.12 A	2.70 A	2.34 A	1.87 A	1.35 A

PHOTOMETRICS

IES INDOOR REPORT PHOTOMETRIC FILE NAME: LDFPC72LT5N

**Type V Narrow Optical
Assembly
72,000 Lumen, Cool White**

648W LDFP LED Flood
Color Temperature: 5,000 K



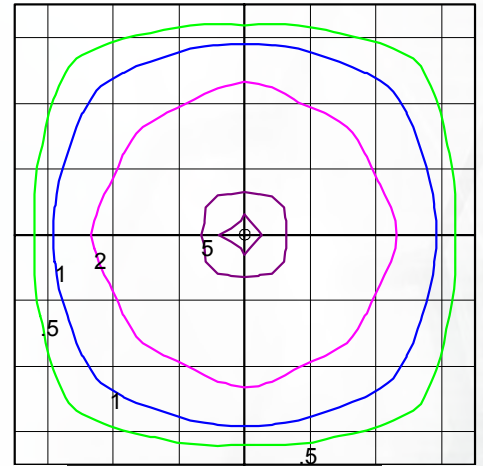
TECHLIGHT
LDFP-C-72L-T5N-X-XX-XX
6BRICK DEFIANT 1050MA CW
8 LUX MX LEDS

Horizontal Footcandles
Scale: 1 Inch = 30 Ft.
Light Loss Factor = 1.00
Lumens Per Lamp = N.A. (absolute photometry)
Luminaire Lumens = 74562
Mounting Height = 30.00 Ft
Maximum Calculated Value = 88.25 Fc
Arrangement: Single

IES INDOOR REPORT PHOTOMETRIC FILE NAME: LDFPC72IT5W

**Type V Wide Optical
Assembly
72,000 Lumen, Cool White**

648W LDFP LED Flood
Color Temperature: 5,000 K



TECHLIGHT
LDFP-C-72L-T5W-X-XX-XX
6BRICK DEFIANT 1050MA CW
8 LUX MX LEDS

Horizontal Footcandles
Scale: 1 Inch = 30 Ft.
Light Loss Factor = 1.00
Lumens Per Lamp = N.A. (absolute photometry)
Luminaire Lumens = 71659
Mounting Height = 30.00 Ft
Maximum Calculated Value = 5.70 Fc
Arrangement: Single

WARNING: Maintenance performed including the replacement of LED bricks while power is still supplied to the luminaire may result in system failures and will void the warranty.



TECHLIGHT
INNOVATION IN ILLUMINATION

2707 SATSUMA | DR. DALLAS, TX 75229 | PH: 800.225.0727 | FX: 214.350.0591 | www.techlight.com

All dimensions and specifications are subject to change without notice.

REV: 20170803-01