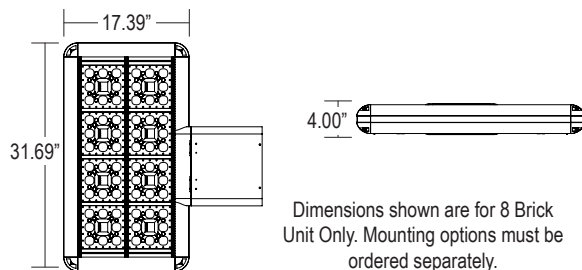




Catalog Number	
Project	Type



High Lumen Output Defiant LED Area Light **LDF SERIES**



Dimensions shown are for 8 Brick Unit Only. Mounting options must be ordered separately.

Series	Housing Height	Length & Width	EPA (ft ²)
LDF	4.00"	17.39" x 31.69"	0.8

FEATURES & SPECIFICATIONS

APPLICATION — The high lumen output luminaire is designed to be a replacement for HID fixtures up to 1000W. It is optimal for lighting applications where long life, low maintenance, and consistent color rendering is required. Areas with limited accessibility due to fixture location or where heavy pedestrian or vehicle traffic makes maintenance difficult are ideal applications. The high wattage/lumen output allows the fixture to be used for parking, restaurant, quick service, shopping centers or sports lighting applications.

CONSTRUCTION — The heavy duty housing is constructed of extruded aluminum. The optical assemblies are sealed in place using a silicone gasket for weather tight protection. Modular LED system for ease of maintenance. ETL listed for wet locations (IP64). Additional IP66 rating available upon request.

FINISH — A Super Durable Polyester powder coat finish is electrostatically applied in our state of the art paint facility. Standard colors available: Black, Bronze, US Green, White. Custom colors available upon request.

OPTICAL SYSTEM — Made with a state of the art UV stabilized acrylic high performance refractive optical assemblies that use high transmissivity materials to achieve precise photometric distributions. Available in Type II, III, IV Automotive, IV Tennis, V Medium and V Wide beam configurations. Star Light Friendly (meets or exceeds Dark Sky requirements) in the horizontal position.

ELECTRICAL SYSTEM — Available in up to a 8 brick LED system in 5000K Cool White (+/- 500K) or 4100K Neutral White color temperatures propagated with Philips Lumileds LUXEON® M LED's. Available with 100-300V 50/60 Hz Class II power supply. LED's rated for over 50,000 hours at 25°C ambient temperature. 480V input option available. 0-10V dimming. Built-in surge protection up to 10 kV. Built-in Active PFC Function >95%/Full load. LED Power Supply conforms to UL1310 Class 2 and UL8750 standards and is IP67 rated for wet locations.

MOUNTING — Standard mounting options include 2", 8", and 10.75" straight arms and a 2" adjustable slip fitter for tenon mounting (for use as a downlight only). Additional mounting options may be available for custom applications.

LISTINGS — LED Power Supply listed for wet locations (IP67). LED bricks ETL listed for wet locations (IP64). Meets US and Canadian safety standards. -40°C to 50°C ambient operation. RoHS Compliant.

PLEASE CONSULT FACTORY FOR FIXTURE AVAILABILITY

ORDERING INFORMATION

Choose the bold face options for the appropriate luminaire configuration for your application and enter on the line above each fixture attribute. Accessories may be factory installed, depending on the particular accessory chosen, but still be ordered as a separate line item.

Example: **LDF8C8T5WF1-BZ**

Series	# of Bricks	Color Temp	# LED's per Brick	Optics	Drive Current	Voltage	Finish
LDF	4 4 Brick 6 6 Brick 8 8 Brick	C Cool White (5000K) N Neutral White (4100K)	8 8 LED	T2 Type II T3 Type III T4A Type IV Automotive T4T Type IV Tennis T5M Type V Medium T5W Type V Wide	F 1400 mA	1 Multi-Volt ¹ 2 480V 3 347V	BZ Bronze BK Black GR US Green WH White SP Special ²

Accessories (Order as separate line items)

SDARM	Die Cast Decorative Arm Moun	PC2	480V Twist-Lock Photocell
SSA-S³	Straight Arm Mount (2")	PC6	Multi-Tap (105-285V) Twist-Lock Photocell
SSA-M	Straight Arm Mount (8")	IP66⁵	Additional IP66 Fixture Rating
2AF	2" Adjustable Slip Fitter		
SSA	Straight Arm Mount (10.75")		
S213⁴	Angled Back Light Shield		
PCR	Twist-Lock Photocell Receptacle		

NOTES

- Multi-Volt is an auto ranging power supply from 100V to 300V input.
- Custom RAL color matching is available. Contact your Techlight sale representative for additional information.
- SSA-S Arm cannot be used when pole mounting fixtures at 90° increments.
- Order one per LED brick. Field installed.
- Additional IP66 rating may not be changed once production has begun on the fixtures.

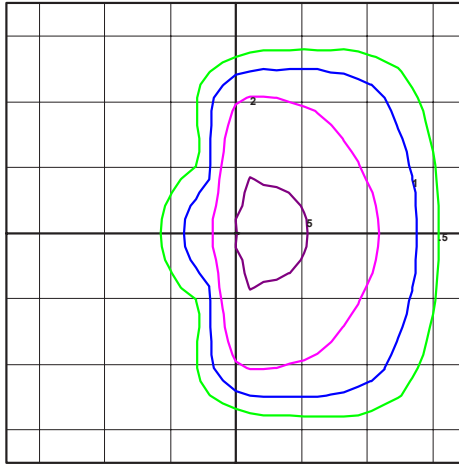
LDF Defiant High Lumen Output Area Light

PHOTOMETRICS

IES INDOOR REPORT PHOTOMETRIC FILE NAME: LDF8C8T4AF

Type III Optical Assembly
8 Brick, 1400mA, Cool
White

550W LDF LED Defiant
Color Temperature: 5,000 K



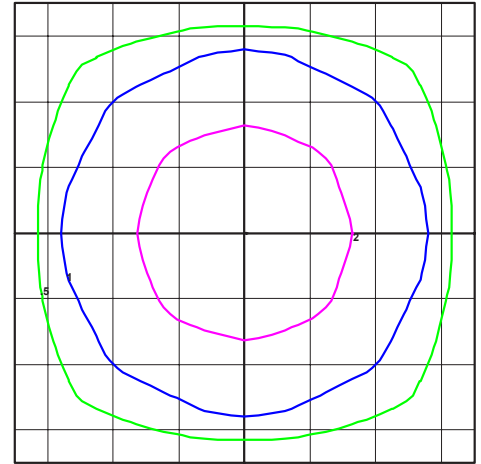
TECHLIGHT
SH-T3 - def type 3
LED 8W LUXEON M

Horizontal Footcandles
Scale: 1 Inch = 30 Ft
Light Loss Factor = 1.00
Lumens Per Lamp = 58107
Total Lamp Lumens = 58107
Mounting Height = 30.00 Ft
Maximum Calculated Value = 7.58 Fc
Arrangement: Single

IES INDOOR REPORT PHOTOMETRIC FILE NAME: LDF8C8T5WF

Type V Wide Optical
Assembly
8 Brick, 1400mA, Cool
White

550W LDF LED Defiant
Color Temperature: 5,000 K



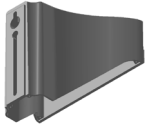
TECHLIGHT
SH-T5W - def type 5w
LED 8W LUXEON M

Horizontal Footcandles
Scale: 1 Inch = 30 Ft
Light Loss Factor = 1.00
Lumens Per Lamp = 58107
Total Lamp Lumens = 58107
Mounting Height = 30.00 Ft
Maximum Calculated Value = 4.73 Fc
Arrangement: Single

MOUNTING ACCESSORIES

SDARM

Die Cast Decorative Arm Mount



SSA-S', SSA-M, SSA

2", 8" and 10.75" Straight Arms (EPA 0.3)



2AF

2" Adjustable Slip Fitter



ADDITIONAL FIXTURE ACCESSORIES

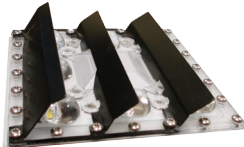
PCR

Photocontrol Receptacle (Factory Installed)



S213²

Angled Back Light Shield



PC2

480V Twist-Lock Photocell

PC6

Multi-Tap (105-285V) Twist-Lock Photocell



NOTES

1 Order one per LED brick. Field installed.

LDF Defiant High Lumen Output Area Light

LUMINAIRE CHARACTERISTICS


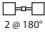


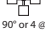
Cool White (5000K) High Output

# of LED Bricks	# of LEDs per Brick	Color Temp	Delivered Lumens						System Wattage	L70 @ 25°C
			TYPE II	TYPE III	TYPE IV AUTO	TYPE IV TENNIS	TYPE V MEDIUM	TYPE V WIDE		
4 BRICK	8	CW	25762	28379	27753	28614	28630	28235	275W	> 50K
6 BRICK	8	CW	38643	42569	41628	42921	42946	42352	413W	> 50K
8 BRICK	8	CW	51524	56758	55505	57228	57261	56470	550W	> 50K

Neutral White (4100K) High Output

# of LED Bricks	# of LEDs per Brick	Color Temp	Delivered Lumens						System Wattage	L70 @ 25°C
			TYPE II	TYPE III	TYPE IV AUTO	TYPE IV TENNIS	TYPE V MEDIUM	TYPE V WIDE		
4 BRICK	8	NW	25011	27528	26920	27756	27772	27388	275W	> 50K
6 BRICK	8	NW	37518	41292	40380	41634	41658	41082	413W	> 50K
8 BRICK	8	NW	50023	55056	53840	55512	55544	54776	550W	> 50K

EPA RATINGS (ft²)

ARM MOUNT		
Fixture Configuration	EPA's ¹	
	SSA-M Arm	SSA Arm
 1 @ 90°	1.1	1.1
 2 @ 180°	2.2	2.2
 2 @ 90°	2.1	2.1
 3 @ 90°	2.8	2.8
 4 @ 90° or 4 @ 70°	3.8	3.8

WARNING: Maintenance performed including the replacement of LED bricks while power is still supplied to the luminaire may result in system failures and will void the warranty.

NOTES

1 EPA's shown include both the fixture and the mounting apparatus.



Techlight, Inc.
2707 Satsuma Drive
Dallas, TX, 75229
Phone: 214-350-0591, 800-225-0727, Fax: 214-350-9137
www.techlight.com