



Catalog Number	
Project	Type

FEATURES & SPECIFICATIONS

APPLICATION — The high performance retrofit system is designed for applications where long life, low maintenance, and consistent color rendering is required. Areas with limited accessibility due to fixture location or where heavy pedestrian or vehicle traffic makes maintenance difficult are ideal applications.

CONSTRUCTION — The optical assemblies are sealed in place using a silicone gasket for weather tight protection. Modular LED bricks wired in parallel for ease of maintenance. ETL listed for wet locations (IP64).

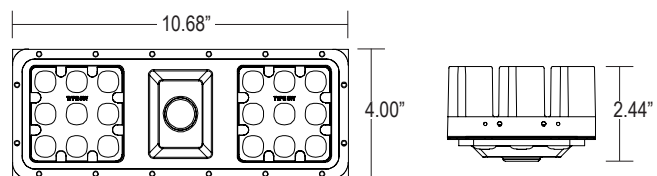
OPTICAL SYSTEM — Made with a state of the art UV stabilized acrylic high performance refractive optical assemblies that use high transmicity materials to achieve precise photometric distributions. Available in Type II, III, IV, IV Automotive, V Medium and V Wide beam configurations.

ELECTRICAL SYSTEM — Available in up to a 3 brick LED system in 5000K Cool White (+/- 500K) or 4100K Neutral White color temperatures propagated with Philips Lumileds LUXEON® T LED's. Available with 90-300V 50/60 Hz Class II power supply. LED's rated up to ,000 hours (TM21 Calculated L70) at 25°C ambient temperature with selectable 700mA or 1050mA operation. 480V input option available. Optional 0-10V dimming. Built-in surge protection up to 10 kV. Thermal protection is provided in the form of a dimming thermal foldback until fixture reverts back to the optimal operating temperature. Built-in Active PFC Function >95%/Full load. LED Power Supply conforms to UL1310 Class 2 and UL8750 standards and is IP67 rated for wet locations.

LISTINGS — ETL listed for wet locations (IP64). Meets US and Canadian safety standards. -40°C to 50°C ambient operation.



Commercial LED Retrofit System for LSI Medium Challenger **LMCRET SERIES**



ORDERING INFORMATION

Choose the bold face options for the appropriate luminaire configuration for your application and enter on the line above each fixture attribute. Accessories may be factory installed, depending on the particular accessory chosen, but still be ordered as a separate line item.

Example: **LMCRET 3 C 8 T3 D 1 BZ**

LMCRET

Series	# of Bricks	Color Temp	# LED's per Brick	Optics	Drive Current	Voltage	Finish
LMCRET Retrofit Kit for LSI Medium Challenger	3 3 Brick	C Cool White (5000K) N Neutral White (4100K)	8 18 LED	T2 Type II T3 Type III T4 Type IV T4A Type IV Automotive T5M Type V Medium T5W Type V Wide	C 700mA Driver D 1050mA Driver	1 Multi-Volt ¹ 2 480V 3 347V	BK Black BZ Bronze GR US Green WH White SP Special ²

Accessories (Order as separate line items)

BSP3-277-LC	20kV Surge Suppressor
LOKTAB	Tamper Resistant LED Brick Locking Tabs (12)

NOTES

- Multi-Volt is an auto ranging power supply from 90V to 300V input.
- Custom RAL color matching is available. Contact your Techlight sale representative for additional information.

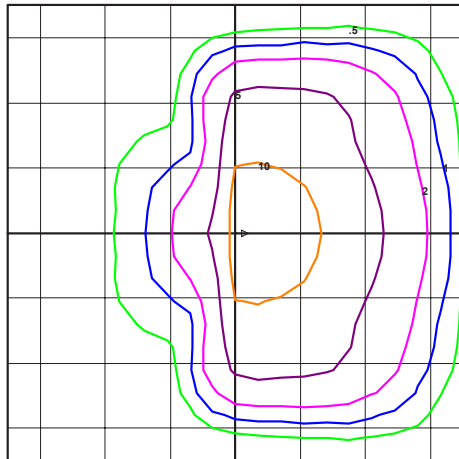
LMCRT Commercial LED Retrofit System for LSI Medium Challenger

PHOTOMETRICS

IES INDOOR REPORT PHOTOMETRIC FILE NAME: LMCRET3C8T3D1

Type III Optical Assembly
3 Brick, 1050mA, Cool
White

183W LMCRET Retro Kit
Color Temperature: 5,000 K

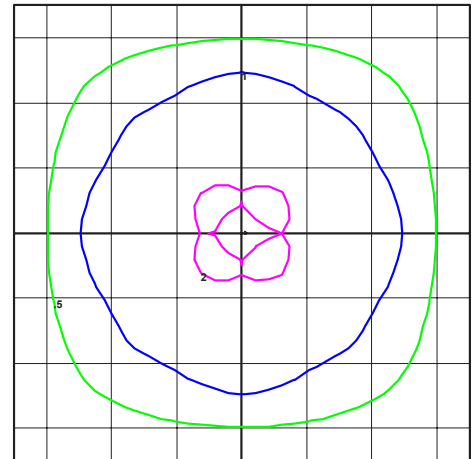


TECHLIGHT
LMCRET3C8T3D1
Horizontal Footcandles
Scale: 1 Inch = 10 Ft.
Light Loss Factor = 1.00
Lumens Per Lamp = N/A. (absolute photometric)
Luminaire Lumens = 12940
Mounting Height = 10.00 Ft
Maximum Calculated Value = 14.81 Fc
Arrangement: Single

IES INDOOR REPORT PHOTOMETRIC FILE NAME: LMCRET3C8T5WD1

Type V Wide Optical
Assembly
3 Brick, 1050mA, Cool
White

183W LMCRET Retro Kit
Color Temperature: 5,000 K



TECHLIGHT
LMCRET3C8T5WD1
Horizontal Footcandles
Scale: 1 Inch = 20 Ft.
Light Loss Factor = 1.00
Lumens Per Lamp = N/A. (absolute photometric)
Luminaire Lumens = 16537
Mounting Height = 20.00 Ft
Maximum Calculated Value = 2.23 Fc
Arrangement: Single

LUMINAIRE CHARACTERISTICS

Cool White (5000K) 700 mA Drive Current

# of LED Bricks	# of LEDs per Brick	Color Temp	Delivered Lumens						System Wattage	L70 @ 25°C	Amperage Draw					
			TYPE II	TYPE III	TYPE IV	TYPE 4A	TYPE 5M	TYPE 5W			120V	208V	240V	277V	347V	480V
3 BRICK	18	CW	12167 B3 U0 G2	11980 B3 U0 G2	12122 B3 U0 G2	11975 B3 U0 G1	12041 B3 U0 G1	12195 B4 U0 G2	122	>495K	1.02 A	.59 A	.51 A	.45 A	.36 A	.26 A

Cool White (5000K) 1050 mA Drive Current

# of LED Bricks	# of LEDs per Brick	Color Temp	Delivered Lumens						System Wattage	L70 @ 25°C	Amperage Draw					
			TYPE II	TYPE III	TYPE IV	TYPE 4A	TYPE 5M	TYPE 5W			120V	208V	240V	277V	347V	480V
3 BRICK	18	CW	16514 B3 U0 G2	16262 B3 U0 G2	16453 B3 U0 G2	16515 B3 U0 G2	16343 B4 U0 G2	16553 B5 U0 G3	183	>425K	1.53 A	.88 A	.77 A	.67 A	.53 A	.39 A

Neutral White (4100K) 700 mA Drive Current

# of LED Bricks	# of LEDs per Brick	Color Temp	Delivered Lumens						System Wattage	L70 @ 25°C	Amperage Draw					
			TYPE II	TYPE III	TYPE IV	TYPE 4A	TYPE 5M	TYPE 5W			120V	208V	240V	277V	347V	480V
3 BRICK	18	CW	11906 B3 U0 G2	11724 B3 U0 G2	11862 B3 U0 G2	11719 B3 U0 G1	11783 B3 U0 G1	11934 B4 U0 G2	122	>495K	1.02 A	.59 A	.51 A	.45 A	.36 A	.26 A

Neutral White (4100K) 1050 mA Drive Current

# of LED Bricks	# of LEDs per Brick	Color Temp	Delivered Lumens						System Wattage	L70 @ 25°C	Amperage Draw					
			TYPE II	TYPE III	TYPE IV	TYPE 4A	TYPE 5M	TYPE 5W			120V	208V	240V	277V	347V	480V
3 BRICK	18	CW	16161 B3 U0 G2	15914 B3 U0 G2	16101 B3 U0 G2	15907 B3 U0 G2	15994 B4 U0 G2	16199 B4 U0 G2	183	>425K	1.53 A	.88 A	.77 A	.67 A	.53 A	.39 A

WARNING: Maintenance performed including the replacement of LED bricks while power is still supplied to the luminaire may result in system failures and will void the warranty.



Techlight, Inc.
2707 Satsuma Drive
Dallas, TX, 75229
Phone: 214-350-0591, 800-225-0727, Fax: 214-350-9137
www.techlight.com