



Catalog Number	
Project	Type

FEATURES & SPECIFICATIONS

APPLICATION — The new Center Court Pro Series luminaires are designed as a superior lighting solution for tennis courts utilizing the most efficient technology available.

CONSTRUCTION — The fixture housing is constructed of durable formed aluminum with all seams welded and sealed to withstand the harshest of environments. The flat tempered glass lens is sealed in place and a one-piece door gasket is provided for weather tight protection. ETL listed for wet locations.

FINISH — A Super Durable Polyester powder coat finish is electrostatically applied in our state of the art paint facility. Standard colors available: Black, Bronze, US Green, White. Custom colors available upon request.

OPTICAL SYSTEM — State of the art Enhanced High Performance Reflector uses specular faceted high gloss components and a tempered flat lens which utilizes the highest light transmission glass technology for the best optics in the industry. The lamp is oriented vertically for maximum life and efficiency.

ELECTRICAL SYSTEM — Available in 450 thru 1000W standard metal halide and pulse-start metal halide. Comes standard with 4KV pulse rated mogul base sockets. Each 60HZ CWA multi-tap, 480V, or 5-tap ballast is pre-wired and installed for convenience. 50HZ ballast available upon request.

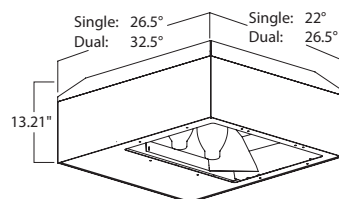
MOUNTING — Standard mounting options include single, twin 70° and 180°, quad 70° and 90° Davit and 7° Up Tilt Straight Arms.



Center Court Pro Tennis Shoebox LSBV SERIES



Fixture shown with DV190 Davit Arm which is ordered separately.



ORDERING INFORMATION

Choose the bold face options for the appropriate luminaire configuration for your application and enter on the line above each fixture attribute. Accessories may be factory installed, depending on the particular accessory chosen, but still be ordered as a separate line item.

Example: **LSBVG6A1-PS-BZ**

Series		Reflector	Wattage/Source		Voltage		Lamp	Pulse-Start	Finish			
LSBV	G	Type IV Premium Forward Throw	1	1000W Metal Halide	A	Multi-Tap ^{1,2}	1	Single	PS	Pulse-Start	BK	Black
			6	775W PS Metal Halide	B	480V	2	Dual			BZ	Bronze
			7	450W PS Metal Halide	C	5-Tap ²					GR	OD Green
			10	575W PS Metal Halide ³							USG	US Green
			11	875W PS Metal Halide							WH	White
											SP	Special ³

Accessories (Order as separate line items)

3AF⁴	Adjustable Knuckle Fitter	CCS7-190	Single Straight Arm with 7° Up Tilt
S193	Angled Back Light Shield (Single Lamp Hsg)	CCS7-270	Double Straight Arm at 70° with 7° Up Tilt
DV190	Single Davit Arm	CCS7-2180	Double Straight Arm at 180° with 7° Up Tilt
DV2180	Double Davit Arm at 180°	CCS7-470	Quad Straight Arm at 70° with 7° Up Tilt
DV270	Double Davit Arm at 70°	CCS7-490	Quad Straight Arm at 90° with 7° Up Tilt
DV470	Quad Davit Arm at 70°		
DV490	Quad Davit Arm at 90°		

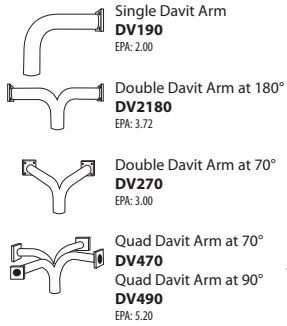
NOTES

- 1 Multi-Tap Ballast is 120V, 208V, 240V, & 277V.
- 2 Fixture is pre-wired for 240V. Alternate voltages will require field adjustment.
- 3 Custom RAL color matching is available. Contact your Techlight sale representative for additional information.
- 4 To be used in conjunction with DV or CCS arm to aid in fixture leveling.

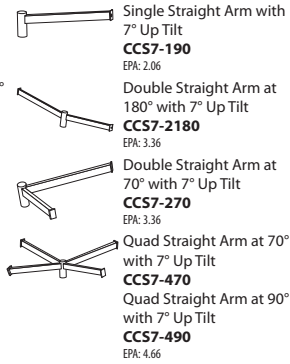
LSBV Center Court Pro Tennis Shoebox

MOUNTING ACCESSORIES

DAVIT ARMS



CCS 7° TILT ARMS



ADDITIONAL ACCESSORIES



ADDITIONAL FIXTURE EPA INFORMATION

Single Hsg Fixture EPA (ft.²) - 2.50
 Approx. Weight - 65 lbs.
 Dual Hsg Fixture EPA (ft.²) - 3.00
 Approx. Weight - 95 lbs.

Fixture Configuration	EPA's			
	Davit Arm		7° CCS Arm	
	Single Hsg	Dual Hsg	Single Hsg	Dual Hsg
1 @ 90°	4.5	5.0	4.56	5.06
2 @ 180°	8.72	9.72	8.36	9.36
2 @ 90° or 2 @ 70°	7.55	8.46	7.91	8.82
4 @ 90° or 4 @ 70°	13.73	15.43	13.19	14.89



Techlight, Inc.
 2707 Satsuma Drive
 Dallas, TX, 75229
 Phone: 214-350-0591, 800-225-0727, Fax: 214-350-9137
www.techlight.com