



DesignLights Consortium® Qualified. Please go to [www.designlights.org](http://www.designlights.org) for the current Qualified Products List. Further details about qualified models may be found under Family Models.

Catalog Number	
Project	Type

## FEATURES & SPECIFICATIONS

**APPLICATION** — The high performance luminaire is designed for area lighting applications where long life, low maintenance, and consistent color rendering is required. Areas with limited accessibility due to fixture location or where heavy pedestrian or vehicle traffic makes maintenance difficult are ideal applications such as parking lots or walkways. It is also compact and versatile enough for general purpose security lighting.

**CONSTRUCTION** — The heavy duty housing is constructed of extruded aluminum. The optical assemblies are sealed in place using a silicone gasket for weather tight protection. Modular LED bricks wired in parallel for ease of maintenance. ETL listed for wet locations (IP64). Additional IP66 rating available upon request.

**FINISH** — A Super Durable Polyester powder coat finish is electrostatically applied in our state of the art paint facility. Standard colors available: Black, Bronze, US Green, White. Custom colors available upon request.

**OPTICAL SYSTEM** — Made with a state of the art UV stabilized acrylic high performance refractive optical assemblies that use high transmissivity materials to achieve precise photometric distributions. Available in Type II, III, IV, IV Automotive, V Medium and V Wide beam configurations. Fixture is full cutoff and is Star Light Friendly (meets or exceeds Dark Sky requirements) in the horizontal position.

**ELECTRICAL SYSTEM** — Available in up to a 6 brick LED system in 5000K Cool White (+/- 500K) or 4100K Neutral White color temperatures (70 CRI min.) propagated with Philips Lumileds LUXEON® T LED's or Osram equivalent. Available with 90-300V 50/60 Hz Class II power supply. LED's rated over 355,000 hours (TM21 Calculated L70) at 25°C ambient temperature with selectable 700mA, 1050mA and 1400mA operation. Lumen Maintenance >97% at 50K hrs. 347V and 480V input options available. Standard 0-10V dimming. Fixture provided with integral 10kV surge protection that meets IEEE C62.42.2-2002. Built-in Active PFC Function. LED Power Supply conforms to UL1310 Class 2 and UL8750 standards and is IP67 rated for wet locations.

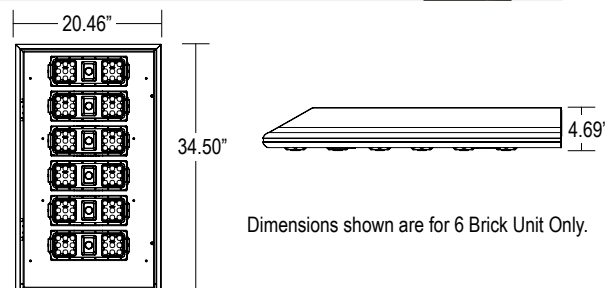
**MOUNTING** — Fixture will accommodate a horizontal 2-3/8" OD tenon directly into the back of the fixture (See TH Series Mounting Accessories). Additional mounting options may be available for custom applications.

**LISTINGS** — LED Power Supply listed for wet locations (IP67). LED bricks ETL listed for wet locations (IP64). Meets US and Canadian safety standards. -40°C to 50°C ambient operation. RoHS Compliant.

**WARRANTY** — The complete luminaire is covered by a 5-year limited warranty.



## Saber LED Area Light Rigid Mount LSBW SERIES



Series	Housing Height	Length & Width	EPA (ft <sup>2</sup> )
<b>LSBW</b>	4.69"	34.50" x 20.46"	0.65 for 6 Brick Unit

## ORDERING INFORMATION

Choose the bold face options for the appropriate luminaire configuration for your application and enter on the line above each fixture attribute. Accessories may be factory installed, depending on the particular accessory chosen, but still be ordered as a separate line item.

Example: **LSBW6C8T5WD1-BZ**

### LSBW

Series	# of Bricks	Color Temp	# LED's per Brick	Optics	Drive Current	Voltage	Options	Finish		
<b>LSBW</b>	<b>1</b> 1 Brick	<b>C</b> Cool White (5000K)	<b>8</b> 18 LED	<b>T2</b> Type II	<b>C</b> 700mA Driver	<b>1</b> Multi-Volt <sup>1</sup>	<b>L</b> Left Rotated Optics <b>R</b> Right Rotated Optics  (Leave Blank for standard optics)	<b>BK</b> Black <b>BZ</b> Bronze <b>GR</b> US Green <b>WH</b> White <b>SP</b> Special <sup>2</sup>		
	<b>2</b> 2 Brick	<b>N</b> Neutral White (4100K)		<b>T3</b> Type III					<b>D</b> 1050mA Driver	<b>2</b> 480V
	<b>3</b> 3 Brick			<b>T4</b> Type IV						
	<b>4</b> 4 Brick			<b>T4A</b> Type IV Automotive						
	<b>5</b> 5 Brick			<b>T5M</b> Type V Medium						
	<b>6</b> 6 Brick			<b>T5W</b> Type V Wide						

### Accessories (Order as separate line items)

<b>2AF-T6</b>	Adjustable Tenon Mount Adaptor	<b>TH190</b>	Horizontal Tenon Adaptor 1 @ 90° (4")
<b>TH190-16</b>	Horizontal Tenon Adaptor 1 @ 90° (16")	<b>TH2180</b>	Horizontal Tenon Adaptor 2 @ 180° (4")
<b>TH2180-16</b>	Horizontal Tenon Adaptor 2 @ 180° (16")	<b>RH2-16</b>	Horizontal Tenon Adaptor Dual In-Line
<b>TH290-16</b>	Horizontal Tenon Adaptor 2 @ 90° (16")	<b>IP66<sup>3</sup></b>	Additional IP66 Fixture Rating
<b>TH390-16</b>	Horizontal Tenon Adaptor 3 @ 90° (16")	<b>LEDOPTIC-B</b>	Spill Light Elimination
<b>TH490-16</b>	Horizontal Tenon Adaptor 4 @ 90° (16")	<b>LEDOPTIC-W</b>	Spill Light Elimination "Black Out"
<b>TH3120-16</b>	Horizontal Tenon Adaptor 3 @ 120° (16")	<b>S266</b>	Saber External Back Shield

### NOTES

- Multi-Volt is an auto ranging power supply from 90V to 300V input.
- Custom RAL color matching is available. Contact your Techlight sale representative for additional information.
- Additional IP66 rating may not be changed once production has begun on the fixtures.

[www.techlight.com](http://www.techlight.com)

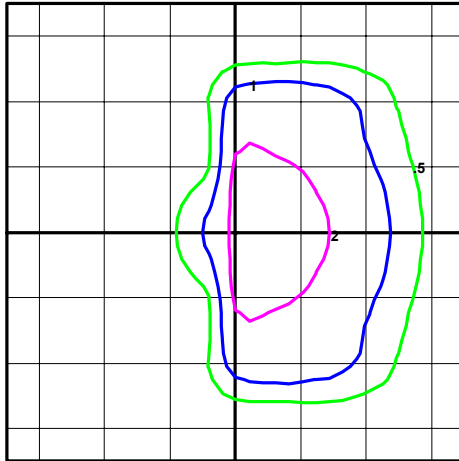
# LSBW Saber LED Area Light Rigid Mount

## PHOTOMETRICS

### IES INDOOR REPORT PHOTOMETRIC FILE NAME: LSBW6C8T3D1

Type III Optical Assembly  
6 Brick, 1050mA, Cool  
White

365W LSBR LED Area Light  
Color Temperature: 5,000 K



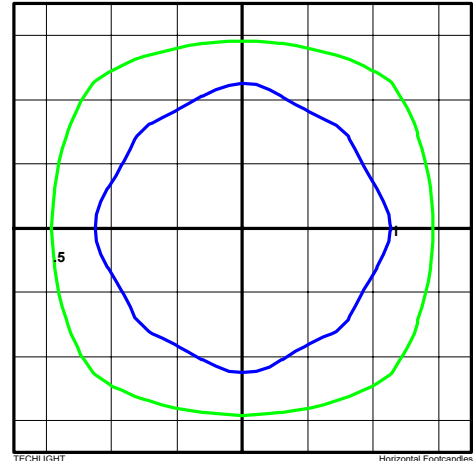
TECHLIGHT  
LSBW6C8T3D1  
LED COOL WHITE LUXEON T (1050mA)

Horizontal Footcandles  
Scale: 1 Inch = 30 Ft.  
Light Loss Factor = 1.00  
Lumens Per Lamp = N.A. (absolute photometry)  
Luminaire Lumens = 25660  
Mounting Height = 30.00 Ft  
Maximum Calculated Value = 3.46 Fc  
Arrangement: Single

### IES INDOOR REPORT PHOTOMETRIC FILE NAME: LSBW6C8T5WD1

Type V Wide Optical  
Assembly  
6 Brick, 1050mA, Cool  
White

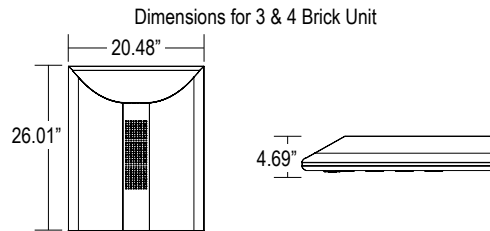
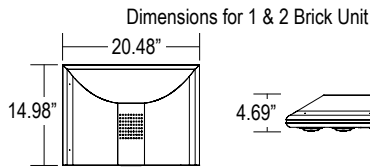
365W LSBR LED Area Light  
Color Temperature: 5,000 K



TECHLIGHT  
LSBW6C8T5WD1  
LED COOL WHITE LUXEON T (1050mA)

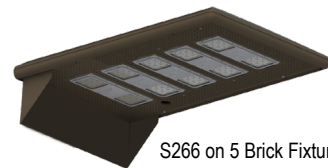
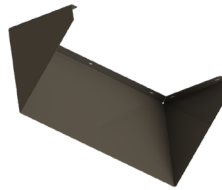
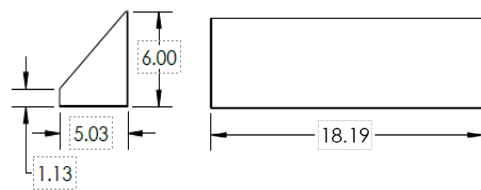
Horizontal Footcandles  
Scale: 1 Inch = 30 Ft.  
Light Loss Factor = 1.00  
Lumens Per Lamp = N.A. (absolute photometry)  
Luminaire Lumens = 33074  
Mounting Height = 30.00 Ft  
Maximum Calculated Value = 1.98 Fc  
Arrangement: Single

## ADDITIONAL FIXTURE DIMENSIONS



## ACCESSORY DIMENSIONS

S266 - Saber External Back Shield



## LUMINAIRE CHARACTERISTICS

### Cool White (5000K) 700 mA Drive Current

# of LED Bricks	# of LEDs per Brick	Color Temp	Delivered Lumens						System Wattage	L70 @ 25°C	Amperage Draw					
			TYPE II	TYPE III	TYPE IV	TYPE 4A	TYPE 5M	TYPE 5W			120V	208V	240V	277V	347V	480V
1 BRICK	18	CW	4056	3993	4041	3992	4014	4065	41	>495K	0.35 A	0.21 A	0.18 A	0.16 A	0.13 A	0.09 A
2 BRICK	18	CW	8111	7987	8081	7983	8027	8130	81	>495K	0.70 A	0.41 A	0.35 A	0.31 A	0.25 A	0.18 A
3 BRICK	18	CW	12167	11980	12122	11975	12041	12195	122	>495K	1.05 A	0.61 A	0.53 A	0.46 A	0.37 A	0.27 A
4 BRICK	18	CW	16222	15974	16162	15967	16054	16260	162	>495K	1.40 A	0.81 A	0.70 A	0.61 A	0.49 A	0.35 A
5 BRICK	18	CW	20278	19967	20203	19959	20068	20325	203	>495K	1.75 A	1.01 A	0.88 A	0.76 A	0.61 A	0.44 A
6 BRICK	18	CW	24334	23961	24243	23950	24081	24390	243	>495K	2.10 A	1.22 A	1.05 A	0.91 A	0.73 A	0.53 A

### Cool White (5000K) 1050 mA Drive Current

# of LED Bricks	# of LEDs per Brick	Color Temp	Delivered Lumens						System Wattage	L70 @ 25°C	Amperage Draw					
			TYPE II	TYPE III	TYPE IV	TYPE 4A	TYPE 5M	TYPE 5W			120V	208V	240V	277V	347V	480V
1 BRICK	18	CW	5505	5421	5484	5505	5448	5518	61	>425K	0.53 A	0.31 A	0.27 A	0.23 A	0.19 A	0.14 A
2 BRICK	18	CW	11010	10841	10969	11010	10896	11035	122	>425K	1.05 A	0.61 A	0.53 A	0.46 A	0.37 A	0.27 A
3 BRICK	18	CW	16514	16262	16453	16515	16343	16553	183	>425K	1.58 A	0.91 A	0.79 A	0.69 A	0.55 A	0.40 A
4 BRICK	18	CW	22019	21682	21938	22020	21791	22070	244	>425K	2.10 A	1.22 A	1.05 A	0.91 A	0.73 A	0.53 A
5 BRICK	18	CW	27524	27103	27422	27525	27239	27588	304	>425K	2.63 A	1.52 A	1.32 A	1.14 A	0.91 A	0.66 A
6 BRICK	18	CW	33029	32523	32906	33030	32687	33106	365	>425K	3.15 A	1.82 A	1.58 A	1.37 A	1.09 A	0.79 A

### Cool White (5000K) 1400 mA Drive Current

# of LED Bricks	# of LEDs per Brick	Color Temp	Delivered Lumens						System Wattage	L70 @ 25°C	Amperage Draw					
			TYPE II	TYPE III	TYPE IV	TYPE 4A	TYPE 5M	TYPE 5W			120V	208V	240V	277V	347V	480V
1 BRICK	18	CW	7932	7813	7908	7946	7859	7948	86	>355K	0.72 A	0.42 A	0.36 A	0.32 A	0.25 A	0.18 A
2 BRICK	18	CW	15864	15626	15816	15892	15718	15896	172	>355K	1.44 A	0.83 A	0.72 A	0.63 A	0.50 A	0.36 A
3 BRICK	18	CW	23796	23439	23724	23838	23577	23844	258	>355K	2.15 A	1.25 A	1.08 A	0.94 A	0.75 A	0.54 A
4 BRICK	18	CW	31728	31252	31632	31784	31436	31792	344	>355K	2.87 A	1.66 A	1.44 A	1.25 A	1.00 A	0.72 A
5 BRICK	18	CW	39660	39065	39540	39730	39295	39740	430	>355K	3.59 A	2.07 A	1.80 A	1.56 A	1.24 A	0.90 A
6 BRICK	18	CW	47592	46878	47448	47676	47154	47688	516	>355K	4.30 A	2.49 A	2.15 A	1.87 A	1.49 A	1.08 A

**WARNING:** Maintenance performed including the replacement of LED bricks while power is still supplied to the luminaire may result in system failures and will void the warranty.

**LUMINAIRE CHARACTERISTICS CONTINUED**

**Neutral White (4100K) 700 mA Drive Current**

# of LED Bricks	# of LEDs per Brick	Color Temp	Delivered Lumens						System Wattage	L70 @ 25°C	Amperage Draw					
			TYPE II	TYPE III	TYPE IV	TYPE 4A	TYPE 5M	TYPE 5W			120V	208V	240V	277V	347V	480V
1 BRICK	18	NW	3969	3908	3954	3906	3928	3978	41	>495K	.35 A	.20 A	.18 A	.15 A	.12 A	.09 A
2 BRICK	18	NW	7938	7816	7908	7813	7855	7956	81	>495K	.68 A	.39 A	.34 A	.30 A	.24 A	.17 A
3 BRICK	18	NW	11906	11724	11862	11719	11783	11934	122	>495K	1.02 A	.59 A	.51 A	.45 A	.36 A	.26 A
4 BRICK	18	NW	15875	15632	15816	15625	15711	15912	162	>495K	1.35 A	.78 A	.68 A	.59 A	.47 A	.34 A
5 BRICK	18	NW	19844	19540	19770	19531	19638	19890	203	>495K	1.70 A	.98 A	.85 A	.74 A	.59 A	.43 A
6 BRICK	18	NW	23813	23448	23724	23438	23566	23868	243	>495K	2.03 A	1.17 A	1.02 A	.88 A	.71 A	.51 A

**Neutral White (4100K) 1050 mA Drive Current**

# of LED Bricks	# of LEDs per Brick	Color Temp	Delivered Lumens						System Wattage	L70 @ 25°C	Amperage Draw					
			TYPE II	TYPE III	TYPE IV	TYPE 4A	TYPE 5M	TYPE 5W			120V	208V	240V	277V	347V	480V
1 BRICK	18	NW	5387	5305	5367	5302	5331	5400	61	>425K	.51 A	.30 A	.26 A	.23 A	.18 A	.13 A
2 BRICK	18	NW	10774	10609	10734	10604	10662	10799	122	>425K	1.02 A	.59 A	.51 A	.45 A	.36 A	.26 A
3 BRICK	18	NW	16161	15914	16101	15907	15994	16199	183	>425K	1.53 A	.88 A	.77 A	.67 A	.53 A	.39 A
4 BRICK	18	NW	21548	21218	21468	21209	21325	21598	244	>425K	2.04 A	1.18 A	1.02 A	.89 A	.71 A	.51 A
5 BRICK	18	NW	26935	26523	26835	26511	26656	26998	304	>425K	2.54 A	1.47 A	1.27 A	1.10 A	.88 A	.64 A
6 BRICK	18	NW	32322	31827	32202	31813	31987	32397	365	>425K	3.05 A	1.76 A	1.53 A	1.32 A	1.06 A	.77 A

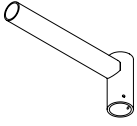
**Neutral White (4100K) 1400 mA Drive Current**

# of LED Bricks	# of LEDs per Brick	Color Temp	Delivered Lumens						System Wattage	L70 @ 25°C	Amperage Draw					
			TYPE II	TYPE III	TYPE IV	TYPE 4A	TYPE 5M	TYPE 5W			120V	208V	240V	277V	347V	480V
1 BRICK	18	NW	6463	6362	6439	6370	6399	6473	87	>355K	.73 A	.42 A	.37 A	.32 A	.26 A	.19 A
2 BRICK	18	NW	12926	12725	12879	12739	12798	12945	174	>355K	1.45 A	.84 A	.73 A	.63 A	.51 A	.37 A
3 BRICK	18	NW	19391	19087	19317	19110	19201	19421	261	>355K	2.18 A	1.26 A	1.09 A	.95 A	.76 A	.55 A
4 BRICK	18	NW	25852	25450	25759	25478	25596	25889	348	>355K	2.90 A	1.68 A	1.45 A	1.26 A	1.01 A	.73 A
5 BRICK	18	NW	32315	31817	32193	31844	31996	32362	435	>355K	3.63 A	2.10 A	1.82 A	1.58 A	1.26 A	.91 A
6 BRICK	18	NW	38782	38174	38636	38220	38401	38862	522	>355K	4.35 A	2.51 A	2.18 A	1.89 A	1.51 A	1.09 A

## MOUNTING ACCESSORIES

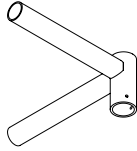
### TH190-16

Horizontal Tenon Adaptor 1 @ 90° (16")



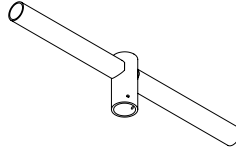
### TH290-16

Horizontal Tenon Adaptor 2 @ 90° (16")



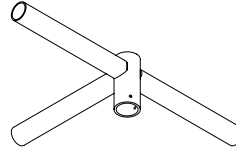
### TH2180-16

Horizontal Tenon Adaptor 2 @ 180° (16")

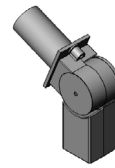


### TH390-16

Horizontal Tenon Adaptor 3 @ 90° (16")

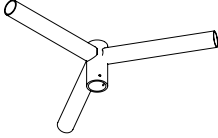


**2AF-T6** (2-3/8" OD) [EPA - 0.2]  
Adjustable Tenon Mount Adaptor



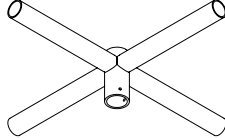
### TH3120-16

Horizontal Tenon Adaptor 3 @ 120° (16")



### TH490-16

Horizontal Tenon Adaptor 4 @ 90° (16")



### TH190

Horizontal Tenon Adaptor 1 @ 90° (4")



### TH290

Horizontal Tenon Adaptor 2 @ 90° (4")



## EPA RATINGS (ft<sup>2</sup>)

Tilt angle:	Saber Small (1-2 Brick Fixtures)							Saber Medium (3-4 Brick Fixtures)							Saber Large (5-6 Brick Fixtures)						
	0	20	30	45	60	70	90	0	20	30	45	60	70	90	0	20	30	45	60	70	90
190 - 1 fixture @ 90°	0.6	1	1.2	1.6	2	2.1	2.6	0.65	1.32	1.65	2.23	2.67	2.86	3.63	0.65	1.85	2.44	3.31	3.97	4.26	5.47
2180 - 2 fixtures @ 180°	1.3	2.1	2.5	3.3	4	4.2	5.3	1.4	2.7	3.4	4.5	5.4	5.8	7.3	2.2	3.7	4.9	6.7	8	8.6	11
290 - 2 fixtures @ 90°	1.2	1.5	1.8	2.2	2.5	2.6	3.2	1.4	2.1	2.4	3	3.4	3.6	4.4	1.8	3	3.6	4.5	5.1	5.4	6.6
390 - 3 fixtures @ 90°	1.6	2	2.2	2.6	2.9	3.1	3.6	2	2.7	3.1	3.6	4.1	4.3	5	2.4	4.1	4.7	5.5	6.2	6.5	7.7
3120 - 3 fixtures @ 120°	1.9	2.6	3	3.7	4.2	4.5	5.1	2.2	3.4	4	5	5.8	6.1	7	3.2	4.9	5.9	7.4	8.6	9.1	10.5
490 - 4 fixtures @ 90°	2.3	3	3.5	4.3	4.9	5.2	6.3	2.7	4.1	4.7	5.9	6.8	7.1	8.7	3.5	5.9	7.1	8.9	10.2	10.8	13.2

