



Catalog Number	
Project	Type

## FEATURES & SPECIFICATIONS

**APPLICATION** — The high lumen output luminaire is designed to be a replacement for HID fixtures up to 1000W. It is optimal for lighting applications where long life, low maintenance, and consistent color rendering is required. Areas with limited accessibility due to fixture location or where heavy pedestrian or vehicle traffic makes maintenance difficult are ideal applications. The high wattage/lumen output allows the fixture to be used for parking, restaurant, quick service, shopping centers or sports lighting applications.

**CONSTRUCTION** — The heavy duty housing is constructed of die cast aluminum with heat dissipating fins. The optical assemblies are sealed in place using a silicone gasket for weather tight protection. Modular LED system for ease of maintenance. ETL listed for wet locations (IP65). Additional IP66 rating available upon request. Fixture can accommodate advanced wireless control, management and reporting systems for outdoor lighting.

**FINISH** — A corrosion-resistant epoxy coat layer that forms a uniform and all-encompassing protective barrier is applied to the fixtures prior to electrostatically applying a super durable polyester powder coat finish. Standard colors available: Black, Bronze, US Green, White. Custom colors available upon request.

**OPTICAL SYSTEM** — Made with a state of the art UV stabilized acrylic high performance refractive optical assemblies that use high transmittance materials to achieve precise photometric distributions. Available in Type II, III, IV, IV Automotive, Automotive Frontline Wide, IV Tennis, V Narrow, V Medium and V Wide beam configurations. Optics may be ordered rotated 90 degrees for perimeter lighting or walkway applications (optics are not field rotatable). The full cutoff fixture is Star Light Friendly (meets or exceeds Dark Sky requirements) in the horizontal position.

**ELECTRICAL SYSTEM** — Available in up to a 6 Module LED system in 5000K-70 CRI Cool White (+/- 500K), 4000K-70 CRI Neutral White or 3000K-70 CRI Warm White color temperatures. Consult factory for high CRI (90+) model availability. Available with 100-300V 50/60 Hz or 347V~480V. LED's rated for over

# LSMT-X SERIES

## High Lumen Output Scimitar LED Area Light



Fixture Shown:  
LSMT 4 Module

SERIES	HOUSING HEIGHT	LENGTH & WIDTH	EPA (FT <sup>2</sup> )
<b>LSMT</b>	7.09"	24.55" x 16.02"	1.3

50,000 hours at 25°C ambient temperature. 0-10V dimming. Built-in surge protection up to 10 kV. Built-in Active PFC Function >95% Full load. LED Power Supply conforms to UL8750 standards.

**MOUNTING** — The fixture was designed to utilize an innovative die cast decorative arm that allows the fixture to easily mount to almost any existing bolt pattern or new pole. Additional mounting options include a quick mount with 8" straight arm (for use on fixtures with no more than 4 LED Modules). Additional mounting options may be available for custom applications.

**LISTINGS** — LED Power Supply listed for wet locations (IP65). Meets US and Canadian safety standards. -40°C to 50°C ambient operation. RoHS Compliant. Meets or exceeds DLC requirements.

## ORDERING INFORMATION

Choose the bold face options for the appropriate luminaire configuration for your application and enter on the line above each fixture attribute. Accessories may be factory installed, depending on the particular accessory chosen, but still be ordered as a separate line item.

EXAMPLE:

**LSMT 6 W X T5W F 1 BZ**

LSMT	# OF MODULES	COLOR TEMP	# LED'S PER MODULE	OPTICS	DRIVE CURRENT	VOLTAGE	OPTIC ROTATION	FINISH
	<b>1</b> = 1 Module <b>2</b> = 2 Module <b>4</b> = 4 Module <b>6</b> = 6 Module	<b>W</b> = Warm White (3000K) <b>C</b> = Cool White (5000K) <b>N</b> = Neutral White (4000K)	<b>X</b> = 8 XHP70 LED's	<b>T2</b> = Type II <b>T3</b> = Type III <b>T4</b> = Type IV <b>T4A</b> = Type IV Auto <b>FAW</b> = Frontline Auto Wide <b>T4T</b> = Type IV Tennis <b>T5N</b> = Type V Narrow <b>T5M</b> = Type V Medium <b>T5W</b> = Type V Wide	<b>F</b> = 1400 mA	<b>1</b> = Multi-Volt <sup>1</sup> <b>2</b> = 347-480V	<b>L</b> = Left Rotated Optics <b>R</b> = Right Rotated Optics (Leave Blank for standard optics)	<b>BZ</b> = Bronze <b>BK</b> = Black <b>GR</b> = US Green <b>WH</b> = White <b>SP</b> = Special <sup>2</sup>

### FACTORY INSTALLED OPTIONS

<b>BTEC</b>	Integrated Bluetooth Control Module Casambi Ready Mesh Network
<b>PCR7<sup>5</sup></b>	7-Pin Twist-Lock Photocell Receptacle ANSI C136.41and Receptacle Shorting Cap
<b>PC2</b>	480V Twist-Lock Photocell
<b>PC7<sup>5</sup></b>	Multi-Tap (105-285V) Twist-Lock Photocell
<b>IP66</b>	Additional IP66 Fixture Rating
<b>(IMS) TLWSFSP-211<sup>6</sup></b>	Fixture Mount Passive Infrared Motion Sensor (IMS Lenses Below, Ordered Separately)
<b>TLWSFSP-L3<sup>7</sup></b>	360° lens, maximum coverage 40' diameter from 20' height (IMS)
<b>TLWSFSP-L7<sup>7</sup></b>	360° lens, maximum coverage 100' diameter from 40' height (IMS)

## ACCESSORIES (Order as separate line items)

<b>SDARM<sup>8</sup></b>	Die Cast Decorative Arm Mount (Square Pole, 1.4 EPA)
<b>SDARM-R<sup>8</sup></b>	Die Cast Decorative Arm Mount (Round Pole, 1.4 EPA)
<b>QMSCM<sup>3</sup></b>	Quick Mount with 8" SSA-M Straight Arm (4 module Max)
<b>S213<sup>4</sup></b>	Angled Back Light Shield
<b>S240<sup>9</sup></b>	Three Sided Visor Shield
<b>S241<sup>9</sup></b>	Three Sided Full Shield
<b>VBWM-SSA-S</b>	Small SSA Straight Arm Wall Mount Adaptor (2")
<b>VBWM-SSA-M</b>	Medium SSA Straight Arm Wall Mount Adaptor (8")
<b>VBWM-SSA</b>	Large SSA Straight Arm Wall Mount Adaptor (10.75")
<b>TLWSFSIR-100</b>	Remote Handheld Sensor Configuration Tool for IMS

## NOTES

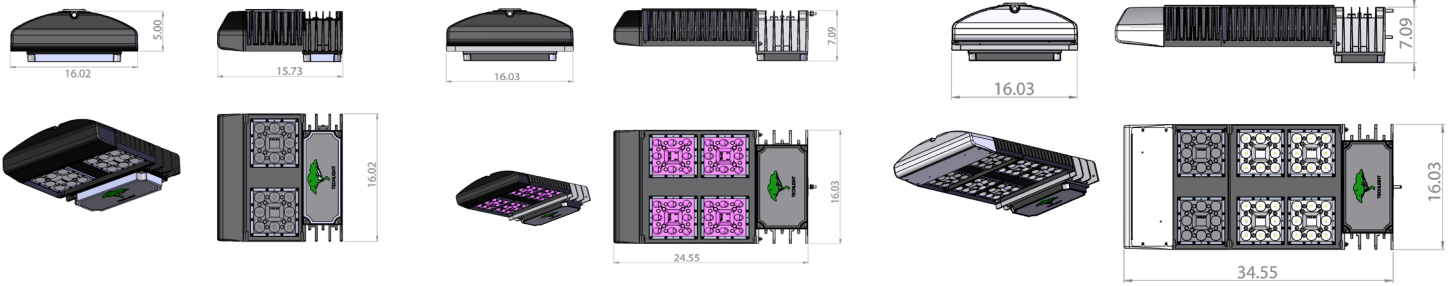
- <sup>1</sup> = Multi-Volt is an auto ranging power supply from 100V to 300V input.
- <sup>2</sup> = Custom RAL color matching is available. Contact your sales representative for additional info.
- <sup>3</sup> = QMSCM Quick Mount only available for fixtures with up to 4 Modules.
- <sup>4</sup> = Order one per LED Module. Field installed.
- <sup>5</sup> = Photocell Receptacle must be installed at the factory. No field installation.
- <sup>6</sup> = TLWSFSP-L3 or L7 Lens must be ordered along with this sensor.
- <sup>7</sup> = Photo control shield available upon request. Len's must be ordered with IMS option.
- <sup>8</sup> = EPA's shown include both the fixture and the mounting apparatus. (See last page)
- <sup>9</sup> = Available for 4 module only. Field installed.



# LSMT-X High Lumen Output Scimitar LED Area Light

## AVAILABLE FIXTURE DIMENSIONS

Dimensions shown are for fixture bodies only. Mounting options must be ordered separately.



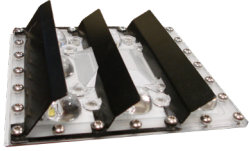
Dimensions shown for 2 Module Unit

Dimensions shown for 4 Module Unit

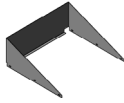
Dimensions shown for 6 Module Unit

## FIXTURE & MOUNTING ACCESSORIES/OPTIONS

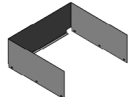
**S213<sup>4</sup>**  
Angled Back Light Shield



**S240<sup>9</sup>**  
Three Sided Visor Shield



**S241<sup>9</sup>**  
Three Sided Full Shield



**PCR7<sup>5</sup>**  
7-Pin Twist-Lock Photocell Receptacle ANSI C136.41 and Receptacle Shorting Cap

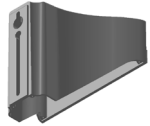


**PC2**  
480V Twist-Lock Photocell



**PC6<sup>5</sup>**  
Multi-Tap (105-285V) Twist-Lock Photocell

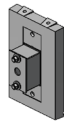
**SDARM, SDARM-R**  
Die Cast Decorative Arm Mount



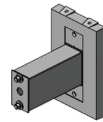
**QMSCM<sup>3</sup>**  
Quick Mount with 8" SSA-M Straight Arm (4 Module Max)



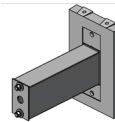
**VBWM-SSA-S**  
Small SSA Straight Arm Wall Mount Adaptor (2")



**VBWM-SSA-M**  
Medium SSA Straight Arm Wall Mount Adaptor (8")



**VBWM-SSA**  
Large SSA Straight Arm Wall Mount Adaptor (10.75")

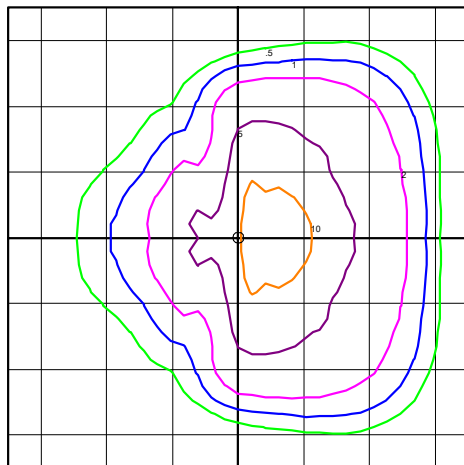


## PHOTOMETRICS

**IES INDOOR REPORT  
PHOTOMETRIC FILE  
NAME: LSMT-6CXT3F**

**Type III Optical Assembly  
6 Module, 1400mA, Cool  
White**

840W LSMT LED Scimitar  
Color Temperature: 5,000 K



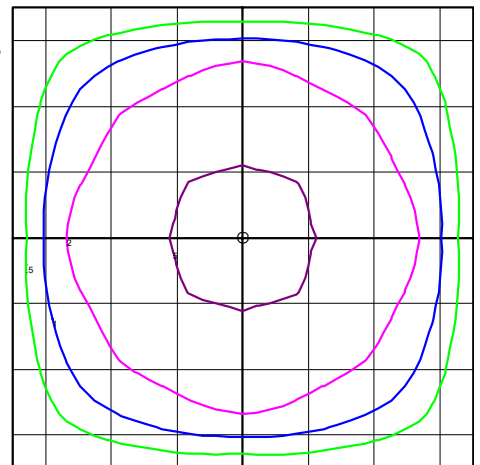
TECHLIGHT  
LSMT-6CXT3F  
SCIMITAR  
COOL WHITE XHP70 (1400mA)

Horizontal Footcandles  
Scale: 1 Inch = 30 Ft  
Light Loss Factor = 1.00  
Lumens Per Lamp = N.A. (absolute photometry)  
Luminaire Lumens = 87948  
Mounting Height = 30.00 Ft  
Maximum Calculated Value = 13.54 Fc  
Arrangement: Single

**IES INDOOR REPORT  
PHOTOMETRIC FILE  
NAME: LSMT-6CXT5WF**

**Type V Wide Optical  
Assembly  
6 Module, 1400mA, Cool  
White**

840W LSMT LED Scimitar  
Color Temperature: 5,000 K



TECHLIGHT  
LSMT-6CXT5WF  
SCIMITAR  
LED COOL WHITE XHP70 (1400mA)

Horizontal Footcandles  
Scale: 1 Inch = 30 Ft  
Light Loss Factor = 1.00  
Lumens Per Lamp = N.A. (absolute photometry)  
Luminaire Lumens = 93250  
Mounting Height = 30.00 Ft  
Maximum Calculated Value = 7.32 Fc  
Arrangement: Single

# LSMT-X High Lumen Output Scimitar LED Area Light

## FIXTURE MOUNT SENSOR (IMS)

### FEATURES & SPECIFICATIONS

**APPLICATION** — The sensor is ideal for areas such as parking facilities, gas stations, pedestrian pathways, and warehouses. A choice of four lenses ensures complete coverage for mounting heights up to 40'.

**OPERATION** — Typically, the sensor ramps lighting On to the selected High mode level when motion is detected and the ambient light level is below the hold off setpoint. After the sensor stops detecting movement and the time delay elapses, lights fade to the Low mode level. If there is no motion during the subsequent cut off time delay, the lights will turn Off. For dusk to dawn control, the integral photocell can switch the lights On and Off based on the ambient light level so that lighting remains on overnight even without motion detection.

#### FEATURES —

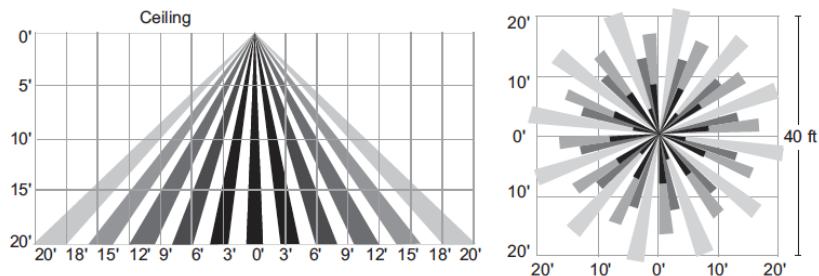
- Provides line voltage On/Off switching
- High and low modes fully adjustable from 0 to 10V
- Time delay from 5 to 30 minutes
- Optional cut off delay
- Adjustable ramp up and fade down times
- Optional daylighting setpoints feature automatic calibration, or permit manual adjustment
- Polycarbonate construction; flame retardant, UV resistant, impact resistant, recyclable
- UL244A and UL508



## SENSOR LENSES FIELD OF VIEW

### TLWSFSP-L3<sup>7</sup>

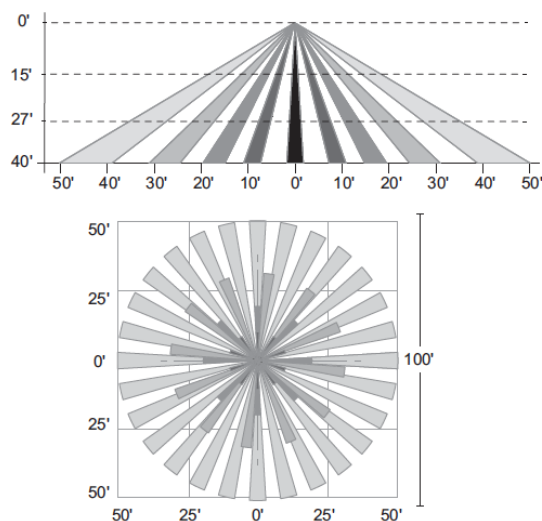
360° lens, maximum coverage 40' diameter from 20' height



<sup>7</sup> = Photo control shield available upon request. Len's must be ordered with IMS option.

### TLWSFSP-L7<sup>7</sup>

360° lens, maximum coverage 100' diameter from 40' height



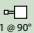
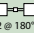
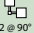
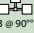
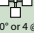
# LSMT-X High Lumen Output Scimitar LED Area Light

## LUMINAIRE CHARACTERISTICS

### 1400 mA Drive Current

# of LED Modules	Drive Current	Color Temp	Delivered Lumens									System Wattage	L70 @ 25°C	Amperage Draw					
			TYPE II	TYPE III	TYPE IV	TYPE 4A	TYPE 4T	FAW	TYPE 5N	TYPE 5M	TYPE 5W			120V	208V	240V	277V	347V	480V
1 Module	1400 mA	Cool White (5000K)	15786	15537	17391	17025	16343	16406	18165	18352	16474	140	>50K	1.17 A	0.68 A	0.59 A	0.51 A	0.41 A	0.30 A
			B3 U0 G3	B3 U0 G3	B3 U0 G3	B3 U0 G2	B3 U0 G1	B3 U0 G3	B5 U0 G1	B4 U0 G1	B4 U0 G2								
			31573	31074	34783	34051	32686	32812	36331	36703	32949								
			B3 U0 G3	B3 U0 G4	B4 U0 G4	B4 U0 G3	B4 U0 G2	B3 U0 G3	B5 U0 G2	B5 U0 G1	B5 U0 G4								
2 Module	1400 mA	Cool White (5000K)	63143	62149	69566	68102	65372	65624	72661	73407	65897	280	>50K	2.34 A	1.35 A	1.17 A	1.02 A	0.81 A	0.59 A
			B4 U0 G5	B4 U0 G5	B5 U0 G5	B5 U0 G4	B5 U0 G3	B4 U0 G5	B5 U0 G3	B5 U0 G2	B5 U0 G5								
			94718	93223	104349	102153	98058	98436	108992	110110	98846								
			B5 U0 G5	B5 U0 G5	B5 U0 G5	B5 U0 G4	B5 U0 G4	B5 U0 G5	B5 U0 G4	B5 U0 G2	B5 U0 G5								
4 Module	1400 mA	Cool White (5000K)	15179	14940	16723	16371	15715	15775	18165	18352	16474	560	>50K	4.67 A	2.70 A	2.34 A	2.03 A	1.62 A	1.17 A
			B3 U0 G3	B3 U0 G3	B3 U0 G3	B3 U0 G2	B3 U0 G1	B3 U0 G3	B5 U0 G1	B4 U0 G1	B4 U0 G2								
			30358	29879	33445	32741	31429	31550	34933	35292	31681								
			B3 U0 G3	B3 U0 G4	B4 U0 G4	B4 U0 G3	B4 U0 G2	B3 U0 G3	B5 U0 G2	B5 U0 G1	B5 U0 G4								
6 Module	1400 mA	Cool White (5000K)	60717	59759	66890	65483	62858	63100	69867	70583	63363	840	>50K	7.00 A	4.04 A	3.50 A	3.04 A	2.43 A	1.75 A
			B4 U0 G5	B4 U0 G5	B5 U0 G5	B5 U0 G4	B5 U0 G3	B4 U0 G5	B5 U0 G3	B5 U0 G2	B5 U0 G5								
			91075	89638	100335	98224	94287	94650	104800	105875	95044								
			B5 U0 G5	B5 U0 G5	B5 U0 G5	B5 U0 G4	B5 U0 G4	B5 U0 G5	B5 U0 G4	B5 U0 G2	B5 U0 G5								
1 Module	1400 mA	Neutral White (4100K)	14117	13895	15553	15226	14615	14671	16894	17068	15321	140	>50K	1.17 A	0.68 A	0.59 A	0.51 A	0.41 A	0.30 A
			B3 U0 G3	B3 U0 G3	B3 U0 G3	B3 U0 G2	B3 U0 G1	B3 U0 G3	B5 U0 G1	B4 U0 G1	B4 U0 G2								
			28233	27788	31104	30450	29229	29342	32488	32822	29464								
			B3 U0 G3	B3 U0 G4	B4 U0 G4	B4 U0 G3	B4 U0 G2	B3 U0 G3	B5 U0 G2	B5 U0 G1	B5 U0 G4								
2 Module	1400 mA	Neutral White (4100K)	56467	55576	62208	60900	58458	58683	64977	65643	58928	280	>50K	2.34 A	1.35 A	1.17 A	1.02 A	0.81 A	0.59 A
			B4 U0 G5	B4 U0 G5	B5 U0 G5	B5 U0 G4	B5 U0 G3	B4 U0 G5	B5 U0 G3	B5 U0 G2	B5 U0 G5								
			84700	83364	93312	91349	87687	88025	97464	98464	88391								
			B5 U0 G5	B5 U0 G5	B5 U0 G5	B5 U0 G4	B5 U0 G4	B5 U0 G5	B5 U0 G4	B5 U0 G2	B5 U0 G5								
4 Module	1400 mA	Neutral White (4100K)	14117	13895	15553	15226	14615	14671	16894	17068	15321	560	>50K	4.67 A	2.70 A	2.34 A	2.03 A	1.62 A	1.17 A
			B3 U0 G3	B3 U0 G3	B3 U0 G3	B3 U0 G2	B3 U0 G1	B3 U0 G3	B5 U0 G1	B4 U0 G1	B4 U0 G2								
			28233	27788	31104	30450	29229	29342	32488	32822	29464								
			B3 U0 G3	B3 U0 G4	B4 U0 G4	B4 U0 G3	B4 U0 G2	B3 U0 G3	B5 U0 G2	B5 U0 G1	B5 U0 G4								
6 Module	1400 mA	Neutral White (4100K)	56467	55576	62208	60900	58458	58683	64977	65643	58928	840	>50K	7.00 A	4.04 A	3.50 A	3.04 A	2.43 A	1.75 A
			B4 U0 G5	B4 U0 G5	B5 U0 G5	B5 U0 G4	B5 U0 G3	B4 U0 G5	B5 U0 G3	B5 U0 G2	B5 U0 G5								
			84700	83364	93312	91349	87687	88025	97464	98464	88391								
			B5 U0 G5	B5 U0 G5	B5 U0 G5	B5 U0 G4	B5 U0 G4	B5 U0 G5	B5 U0 G4	B5 U0 G2	B5 U0 G5								
1 Module	1400 mA	Warm White (3000K)	14117	13895	15553	15226	14615	14671	16894	17068	15321	140	>50K	1.17 A	0.68 A	0.59 A	0.51 A	0.41 A	0.30 A
			B3 U0 G3	B3 U0 G3	B3 U0 G3	B3 U0 G2	B3 U0 G1	B3 U0 G3	B5 U0 G1	B4 U0 G1	B4 U0 G2								
			28233	27788	31104	30450	29229	29342	32488	32822	29464								
			B3 U0 G3	B3 U0 G4	B4 U0 G4	B4 U0 G3	B4 U0 G2	B3 U0 G3	B5 U0 G2	B5 U0 G1	B5 U0 G4								
2 Module	1400 mA	Warm White (3000K)	56467	55576	62208	60900	58458	58683	64977	65643	58928	280	>50K	2.34 A	1.35 A	1.17 A	1.02 A	0.81 A	0.59 A
			B4 U0 G5	B4 U0 G5	B5 U0 G5	B5 U0 G4	B5 U0 G3	B4 U0 G5	B5 U0 G3	B5 U0 G2	B5 U0 G5								
			84700	83364	93312	91349	87687	88025	97464	98464	88391								
			B5 U0 G5	B5 U0 G5	B5 U0 G5	B5 U0 G4	B5 U0 G4	B5 U0 G5	B5 U0 G4	B5 U0 G2	B5 U0 G5								
4 Module	1400 mA	Warm White (3000K)	14117	13895	15553	15226	14615	14671	16894	17068	15321	560	>50K	4.67 A	2.70 A	2.34 A	2.03 A	1.62 A	1.17 A
			B3 U0 G3	B3 U0 G3	B3 U0 G3	B3 U0 G2	B3 U0 G1	B3 U0 G3	B5 U0 G1	B4 U0 G1	B4 U0 G2								
			28233	27788	31104	30450	29229	29342	32488	32822	29464								
			B3 U0 G3	B3 U0 G4	B4 U0 G4	B4 U0 G3	B4 U0 G2	B3 U0 G3	B5 U0 G2	B5 U0 G1	B5 U0 G4								
6 Module	1400 mA	Warm White (3000K)	56467	55576	62208	60900	58458	58683	64977	65643	58928	840	>50K	7.00 A	4.04 A	3.50 A	3.04 A	2.43 A	1.75 A
			B4 U0 G5	B4 U0 G5	B5 U0 G5	B5 U0 G4	B5 U0 G3	B4 U0 G5	B5 U0 G3	B5 U0 G2	B5 U0 G5								
			84700	83364	93312	91349	87687	88025	97464	98464	88391								
			B5 U0 G5	B5 U0 G5	B5 U0 G5	B5 U0 G4	B5 U0 G4	B5 U0 G5	B5 U0 G4	B5 U0 G2	B5 U0 G5								

## EPA RATINGS (ft<sup>2</sup>)

Fixture Configuration	ARM MOUNT		
	1 or 2 Module EPA's <sup>8</sup>	4 Module EPA's <sup>8</sup>	6 Module EPA's <sup>8</sup>
	SDARM	SDARM	SDARM
 1 @ 90°	1.0	1.3	1.6
 2 @ 180°	2.0	2.6	3.2
 2 @ 90°	1.9	2.4	3.0
 3 @ 90°	2.5	3.3	4.0
 4 @ 90° or 4 @ 70°	3.5	4.5	5.5

<sup>8</sup> = EPA's shown include both the fixture and the mounting apparatus.

**WARNING:** This fixture was designed for down aiming and must be used in a manner that prevents the fixture from tilting at an angle greater than 45 degrees. Failure to do so will void the warranty. For flood light applications please see the LSMA Scimitar LED Flood Light.



**TECHLIGHT**  
INNOVATION IN ILLUMINATION

2707 SATSUMA | DR. DALLAS, TX 75229 | PH: 800.225.0727 | www.techlight.com

\*\*All dimensions and specifications are subject to change without notice.\*\*

REV: 20230228-06