



Catalog Number	
Project	Type

## FEATURES & SPECIFICATIONS

**APPLICATION** — The high lumen output luminaire is designed to be a replacement for HID fixtures up to 1500W. It is optimal for lighting applications where long life, low maintenance, and consistent color rendering is required. Areas with limited accessibility due to fixture location or where heavy pedestrian or vehicle traffic makes maintenance difficult are ideal applications. The high wattage/lumen output allows the fixture to be used for parking, restaurant, quick service, shopping centers or sports lighting applications.

**CONSTRUCTION** — The heavy duty housing is constructed of die cast aluminum with heat dissipating fins. The optical assemblies are sealed in place using a silicone gasket for weather tight protection. Modular LED system for ease of maintenance. ETL listed for wet locations (IP65). Additional IP66 rating available upon request. Fixture can accommodate advanced wireless control, management and reporting systems for outdoor lighting.

**FINISH** — A corrosion-resistant epoxy coat layer that forms a uniform and all-encompassing protective barrier is applied to the fixtures prior to electrostatically applying a super durable polyester powder coat finish. Standard colors available: Black, Bronze, US Green, White. Custom colors available upon request.

**OPTICAL SYSTEM** — Made with a state of the art UV stabilized acrylic high performance refractive optical assemblies that use high transmittance materials to achieve precise photometric distributions. Available in Type II, III, IV, IV Automotive, Automotive Frontline Wide, Forward Throw, IV Tennis, V Narrow, V Medium and V Wide beam configurations. Optics may be ordered rotated 90 degrees for perimeter lighting or walkway applications (optics are not field rotatable). The full cutoff fixture is Star Light Friendly (meets or exceeds Dark Sky requirements) in the horizontal position.

**ELECTRICAL SYSTEM** — Available in up to a 6 module LED system in 5000K-70 CRI Cool White (+/- 500K), 4000K-70 CRI Neutral White or 3000K-70 CRI Warm White color temperatures. Consult factory for high CRI (90+) model availability. Available with 100-300V 50/60 Hz or 347V-480V. LED's rated for over 50,000 hours at 25°C ambient temperature. 0-10V dimming. Built-in surge protection up to 10 kV. Built-in

# LSMT-HO SERIES

## Ultra-High Lumen Output Scimitar LED Area Light



Fixture Shown:  
LSMT 4 Module

SERIES	HOUSING HEIGHT	LENGTH & WIDTH	EPA (FT <sup>2</sup> )
<b>LSMT</b>	7.09"	24.55" x 16.03"	0.93

Active PFC Function >95% Full load. LED Power Supply conforms to UL8750 standards. The LSMT HOEB optioned fixture is equipped with an IP67 rated LED Indicator/Test Button and is fully automated for required Life Safe Code diagnostic self-testing.

**MOUNTING** — The fixture was designed to utilize an innovative die cast decorative arm that allows the fixture to easily mount to almost any existing bolt pattern or new pole. Additional mounting options include a quick mount with 8" straight arm (for use on fixtures with no more than 4 LED modules). Additional mounting options may be available for custom applications.

**LISTINGS** — LED Power Supply listed for wet locations (IP65). Meets US and Canadian safety standards. -40°C to 50°C ambient operation. RoHS Compliant. Meets or exceeds DLC requirements.

## ORDERING INFORMATION

Choose the bold face options for the appropriate luminaire configuration for your application and enter on the line above each fixture attribute. Accessories may be factory installed, depending on the particular accessory chosen, but still be ordered as a separate line item.

EXAMPLE:

**LSMT 4 C 80L T5W 1 - BK BTEC**

LSMT	MODULE UNIT (SIZE) <sup>10</sup>	COLOR TEMP	NOMINAL LUMENS <sup>10</sup>	OPTICS <sup>10</sup>	VOLTAGE	OPTIC ROTATION	FINISH	FACTORY INSTALLED OPTIONS
	<b>2</b> = 2 Mod Unit <b>4</b> = 4 Mod Unit <b>6</b> = 6 Mod Unit	<b>W</b> = Warm White (3000K) <b>N</b> = Neutral White (4000K) <b>C</b> = Cool White (5000K)	<b>23L</b> = 23,000 Lumens <b>25L</b> = 25,000 Lumens <b>28L</b> = 28,000 Lumens <b>30L</b> = 30,000 Lumens <b>33L</b> = 33,000 Lumens <b>35L</b> = 35,000 Lumens <b>38L</b> = 38,000 Lumens <b>40L</b> = 40,000 Lumens <b>43L</b> = 43,000 Lumens <b>45L</b> = 45,000 Lumens  <b>50L</b> = 50,000 Lumens <b>55L</b> = 55,000 Lumens <b>60L</b> = 60,000 Lumens <b>65L</b> = 65,000 Lumens <b>70L</b> = 70,000 Lumens <b>75L</b> = 75,000 Lumens <b>80L</b> = 80,000 Lumens <b>85L</b> = 85,000 Lumens <b>90L</b> = 90,000 Lumens  <b>95L</b> = 95,000 Lumens <b>100L</b> = 100,000 Lumens <b>110L</b> = 110,000 Lumens <b>120L</b> = 120,000 Lumens <b>130L</b> = 130,000 Lumens <b>140L</b> = 140,000 Lumens	<b>FAW</b> = Frontline Auto Wide <b>FT</b> = Forward Throw <b>T2</b> = Type II <b>T3</b> = Type III <b>T4</b> = Type IV <b>T4A</b> = Type IV Auto <b>T4T</b> = Type IV Tennis <b>T5M</b> = Type V Medium <b>T5N</b> = Type V Narrow <b>T5W</b> = Type V Wide	<b>1</b> = Multi-Volt <sup>1</sup> <b>2</b> = 347-480V	<b>L</b> = Left Rotated Optics <b>R</b> = Right Rotated Optics (Leave Blank for standard optics)	<b>BZ</b> = Bronze <b>BK</b> = Black <b>GR</b> = US Green <b>WH</b> = White <b>SP</b> = Special <sup>2</sup>	<b>PC2</b> = 480V Twist-Lock Photocell <b>PC6</b> <sup>5</sup> = Multi-Tap (105-285V) Twist-Lock Photocell <b>PCR7</b> <sup>5</sup> = 7-Pin Twist-Lock Photocell Receptacle ANSI C136.41 and Receptacle Shorting Cap  <b>DLP</b> = Dimming Leads Pulled <b>IP66</b> = Additional IP66 Fixture Rating <b>HOEB</b> <sup>11</sup> = Battery Back Up, 90 minutes  <b>BTEC</b> = Integrated Bluetooth Control Module Casambi Ready Mesh Network  <b>IMSBTM</b> <sup>6</sup> = AC Powered Internal Network Wireless PIR & Daylight Harvesting Sensor ( <i>IMSBTM Lenses Below, Ordered as a Separate Line Item</i> ) <b>WHBL1</b> = 360° PIR lens, maximum coverage 80' dia. from 40' height (IMSBTM)  <b>IMS</b> <sup>7</sup> = Fixture Mount Passive Infrared Motion Sensor ( <i>IMS Lenses Below, Ordered as a Separate Line Item</i> ) <b>TLWSFSP-L3</b> <sup>8</sup> = 360° lens, maximum coverage 40' diameter from 20' height (IMS) <b>TLWSFSP-L7</b> <sup>8</sup> = 360° lens, maximum coverage 100' diameter from 40' height (IMS)

## ACCESSORIES (Order as separate line items)

- SDARM** Die Cast Decorative Arm Mount (Square Pole, 0.65 EPA)
- SDARM-R** Die Cast Decorative Arm Mount (Round Pole, 0.65 EPA)
- QMSCM<sup>3</sup>** Quick Mount with 8" SSA-M Straight Arm (4 module Max)
- S213<sup>4</sup>** Angled Back Light Shield
- S240<sup>4</sup>** Three Sided Visor Shield
- S241<sup>9</sup>** Three Sided Full Shield
- VBWM-SSA-S** Small SSA Straight Arm Wall Mount Adaptor (2")
- VBWM-SSA-M** Medium SSA Straight Arm Wall Mount Adaptor (8")
- VBWM-SSA** Large SSA Straight Arm Wall Mount Adaptor (10.75")
- TLWSFSIR-100** Remote Handheld Sensor Configuration Tool for **IMS**

## NOTES

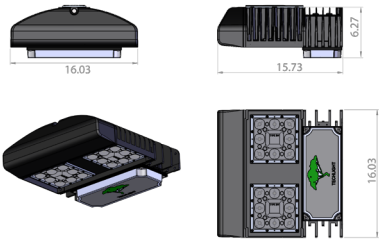
- <sup>1</sup> = Multi-Volt is an auto ranging power supply from 100V to 300V input.
- <sup>2</sup> = Custom RAL color matching is available. Contact your sales representative for additional info.
- <sup>3</sup> = **QMSCM** Quick Mount only available for fixtures with up to 4 modules.
- <sup>4</sup> = Order one per LED module. Field installed.
- <sup>5</sup> = Photocell Receptacle must be installed at the factory. No field installation.
- <sup>6</sup> = **WHBL1** Lens must be ordered along with this sensor.
- <sup>7</sup> = **TLWSFSP-L3** or **L7** Lens must be ordered along with this sensor.
- <sup>8</sup> = Photo control shield available upon request. Len's must be ordered with **IMS** option.
- <sup>9</sup> = Available for 4 module only. Field installed.
- <sup>10</sup> = Reference Lumen Chart on Pages 4 & 5 to identify which **Module Unit (size)** to choose depending on the Nominal Lumens and Optic Types chosen. Some combinations may deviate from ordering logic shown above.
- <sup>11</sup> = Output on emergency mode during normal operation is only 1050mA and during emergency operation, 700mA. The LSMT equipped with optional HOEB using Fulham SSD EMER will produce an estimated 3864 lumens +/- 10% for 90 minutes in Emergency Mode depending on lens type.



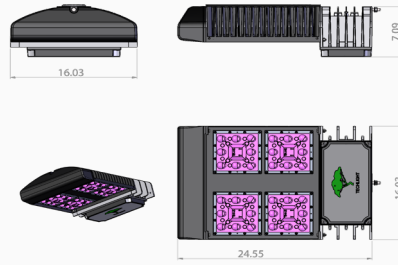
# LSMT-HO Ultra-High Lumen Output Scimitar LED Area Light

## AVAILABLE FIXTURE DIMENSIONS

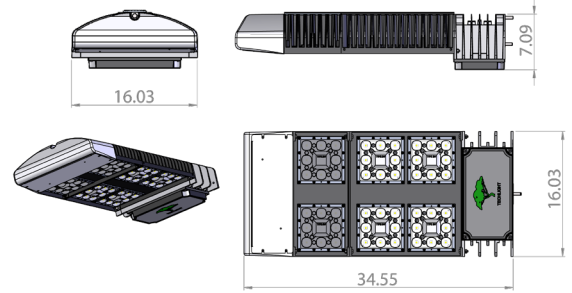
Dimensions shown are for fixture bodies only. Mounting options must be ordered separately.



Dimensions shown for 2 Module Unit



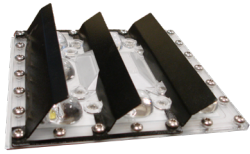
Dimensions shown for 4 Module Unit



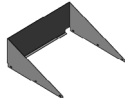
Dimensions shown for 6 Module Unit

## FIXTURE & MOUNTING ACCESSORIES/OPTIONS

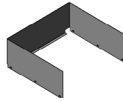
**S213<sup>4</sup>**  
Angled Back Light Shield



**S240<sup>9</sup>**  
Three Sided Visor Shield



**S241<sup>9</sup>**  
Three Sided Full Shield



**PCR7<sup>5</sup>**  
7-Pin Twist-Lock Photocell Receptacle ANSI C136.41 and Receptacle Shorting Cap



**PC2**  
480V Twist-Lock Photocell



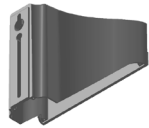
**PC6<sup>5</sup>**  
Multi-Tap (105-285V) Twist-Lock Photocell



**WHBL1**  
360° PIR lens, maximum coverage 80' dia. from 40' height



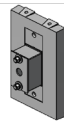
**SDARM, SDARM-R**  
Die Cast Decorative Arm Mount



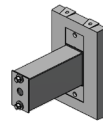
**QMSCM<sup>3</sup>**  
Quick Mount with 8" SSA-M Straight Arm (4 Brick Max)



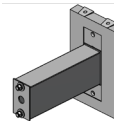
**VBWM-SSA-S**  
Small SSA Straight Arm Wall Mount Adaptor (2")



**VBWM-SSA-M**  
Medium SSA Straight Arm Wall Mount Adaptor (8")



**VBWM-SSA**  
Large SSA Straight Arm Wall Mount Adaptor (10.75")



**IMSBTM<sup>6</sup>**  
AC Powered Internal Network Wireless PIR & Daylight Harvesting Sensor



## EPA RATINGS (ft<sup>2</sup>)

ARM MOUNT (EPA for SDARM is 0.65)			
Fixture Configuration	2 Module EPA's <sup>11</sup>	4 Module EPA's <sup>11</sup>	6 Module EPA's <sup>11</sup>
	SDARM	SDARM	SDARM
1 @ 90°	1.28	1.58	1.89
2 @ 180°	2.56	3.16	3.77
2 @ 90°	2.48	2.78	3.09
3 @ 90°	3.88	4.37	4.76
4 @ 90° or 4 @ 70°	3.65	4.26	4.87

<sup>11</sup> = EPA's shown include both the fixture and the mounting apparatus.

FIXTURE WEIGHTS (APPROX)			
Fixture Configuration	2 Module	4 Module	6 Module
Weight (lbs)	35 lbs	53 lbs	71 lbs

## AMPERAGE DRAW CHART

Wattage Range	120V Amps	208V Amps	240V Amps	277V Amps	347V Amps	480V Amps
101-150W	1.3	0.7	0.6	0.5	0.4	0.3
151-200W	1.7	1	0.8	0.7	0.6	0.4
201-250W	2.1	1.2	1	0.9	0.7	0.5
251-300W	2.5	1.4	1.3	1.1	0.9	0.6
301-350W	2.9	1.7	1.5	1.3	1	0.7
351-400W	3.3	1.9	1.7	1.4	1.2	0.8
401-450W	3.8	2.2	1.9	1.6	1.3	0.9
451-500W	4.2	2.4	2.1	1.8	1.4	1
501-550W	4.6	2.6	2.3	2	1.6	1.1
551-600W	5	2.9	2.5	2.2	1.7	1.3
601-650W	5.4	3.1	2.7	2.3	1.9	1.4
651-700W	5.8	3.4	2.9	2.5	2	1.5
701-750W	6.3	3.6	3.1	2.7	2.2	1.6
751-800W	6.7	3.8	3.3	2.9	2.3	1.7
801-850W	7.1	4.1	3.5	3.1	2.4	1.8
851-900W	7.5	4.3	3.8	3.2	2.6	1.9
901-950W	7.9	4.6	4	3.4	2.7	2
951-1000W	8.3	4.8	4.2	3.6	2.9	2.1

# LSMT-HO Ultra-High Lumen Output Scimitar LED Area Light

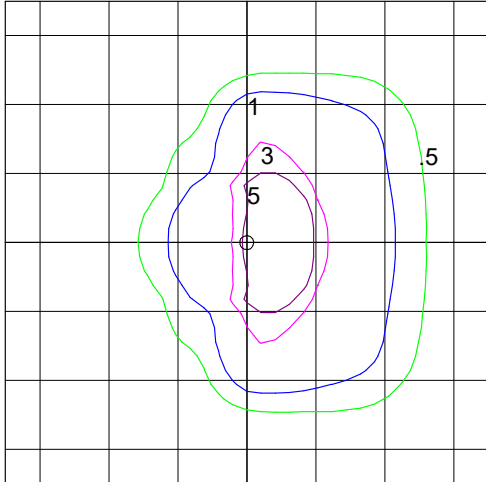
## PHOTOMETRICS

### Mounting Height = 25ft

**IES INDOOR REPORT  
PHOTOMETRIC FILE  
NAME:  
LSMT 2 C 25L T3**

**Type III Optical Assembly  
2 Module, Cool White**

**T3 Optics:**

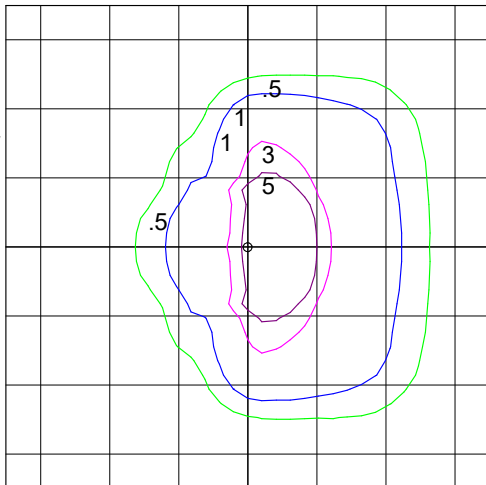


TECHLIGHT  
LSMT C 25L T3  
Scimitar Outdoor Pole Mounted  
LED, 5000K  
Horizontal Footcandles  
Scale: 1 Inch = 25 Ft  
Light Loss Factor = 1.00  
Lumens Per Lamp = N.A. (absolute photometry)  
Luminaire Lumens = 24906  
Mounting Height = 25.00 Ft  
Maximum Calculated Value = 3.72 Fc  
Arrangement: Single

### Mounting Height = 40ft

**IES INDOOR REPORT  
PHOTOMETRIC FILE  
NAME:  
LSMT 4 C 70L T3**

**Type III Optical Assembly  
4 Module, Cool White**



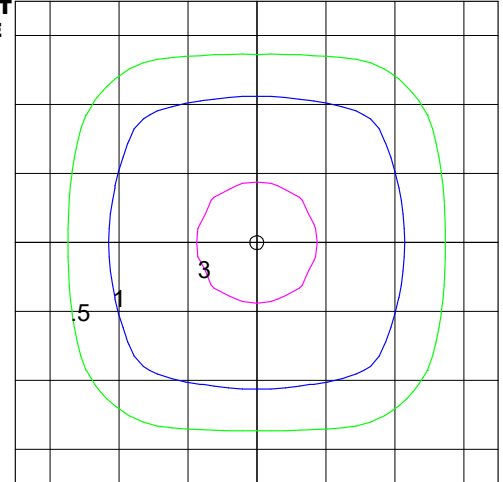
TECHLIGHT  
LSMT C 70L T3  
Scimitar Outdoor Pole Mounted  
LED, 5000K  
Horizontal Footcandles  
Scale: 1 Inch = 40 Ft  
Light Loss Factor = 1.00  
Lumens Per Lamp = N.A. (absolute photometry)  
Luminaire Lumens = 69569  
Mounting Height = 40.00 Ft  
Maximum Calculated Value = 9.51 Fc  
Arrangement: Single

### Mounting Height = 25ft

**IES INDOOR REPORT  
PHOTOMETRIC FILE  
NAME:  
LSMT 2 C 30L T5W**

**Type V Wide Optical  
Assembly  
2 Module, Cool White**

**T5W Optics:**

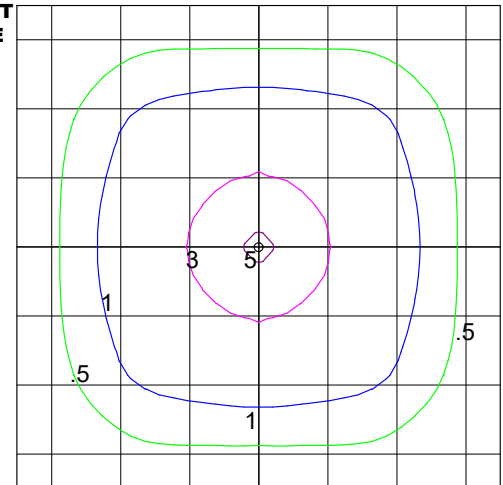


TECHLIGHT  
LSMT C 30L T5W  
Scimitar Outdoor Pole Mounted  
LED, 5000K  
Horizontal Footcandles  
Scale: 1 Inch = 25 Ft  
Light Loss Factor = 1.00  
Lumens Per Lamp = N.A. (absolute photometry)  
Luminaire Lumens = 30888  
Mounting Height = 25.00 Ft  
Maximum Calculated Value = 4.31 Fc  
Arrangement: Single

### Mounting Height = 40ft

**IES INDOOR REPORT  
PHOTOMETRIC FILE  
NAME:  
LSMT 6 C 95L T5W**

**Type V Wide Optical  
Assembly  
6 Module, Cool White**



TECHLIGHT  
LSMT C 95L T5W  
Scimitar Outdoor Pole Mounted  
LED, 5000K  
Horizontal Footcandles  
Scale: 1 Inch = 40 Ft  
Light Loss Factor = 1.00  
Lumens Per Lamp = N.A. (absolute photometry)  
Luminaire Lumens = 96616  
Mounting Height = 40.00 Ft  
Maximum Calculated Value = 5.26 Fc  
Arrangement: Single

**WARNING:** The LSMT fixture was designed as a full cut off area light, and is not to be tilted up. For flood light applications, please see the LSMA Scimitar LED Flood Light.



**TECHLIGHT**  
INNOVATION IN ILLUMINATION

2707 SATSUMA | DR. DALLAS, TX 75229 | PH: 800.225.0727 | FX: 214.350.0591 | www.techlight.com

\*\*All dimensions and specifications are subject to change without notice.\*\*

REV: 20240624-16





# LSMT-HO Ultra-High Lumen Output Scimitar LED Area Light

## FIXTURE MOUNT SENSOR (IMS)

### FEATURES & SPECIFICATIONS

**APPLICATION** — The sensor is ideal for areas such as parking facilities, gas stations, pedestrian pathways, and warehouses. A choice of four lenses ensures complete coverage for mounting heights up to 40'.

**OPERATION** — Typically, the sensor ramps lighting On to the selected High mode level when motion is detected and the ambient light level is below the hold off setpoint. After the sensor stops detecting movement and the time delay elapses, lights fade to the Low mode level. If there is no motion during the subsequent cut off time delay, the lights will turn Off. For dusk to dawn control, the integral photocell can switch the lights On and Off based on the ambient light level so that lighting remains on overnight even without motion detection.

#### FEATURES —

- Provides line voltage On/Off switching
- High and low modes fully adjustable from 0 to 10V
- Time delay from 5 to 30 minutes
- Optional cut off delay
- Adjustable ramp up and fade down times
- Optional daylighting setpoints feature automatic calibration, or permit manual adjustment
- Polycarbonate construction; flame retardant, UV resistant, impact resistant, recyclable
- UL244A and UL508

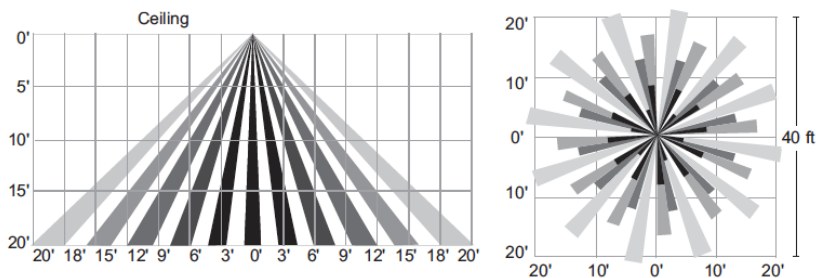
**TLWFSIR-100**  
Remote Handheld Sensor  
Configuration Tool



## SENSOR LENSES FIELD OF VIEW

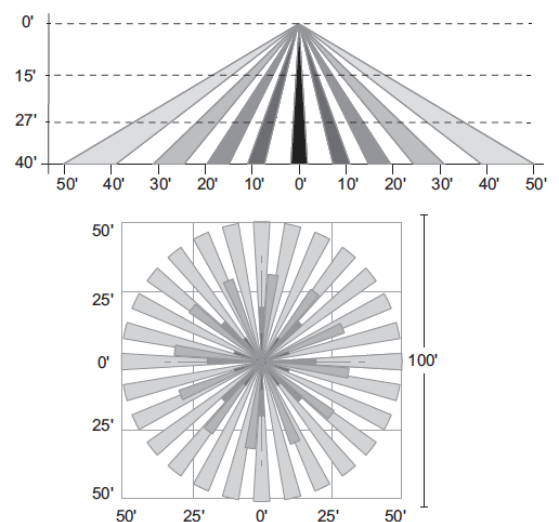
### TLWFSFP-L3<sup>8</sup>

360° lens, maximum coverage 40' diameter from 20' height



### TLWFSFP-L7<sup>8</sup>

360° lens, maximum coverage 100' diameter from 40' height



<sup>8</sup> = Black lens cover and Photo control shield available upon request.  
Len's must be ordered with IMS option.

# LSMT-HO Ultra-High Lumen Output Scimitar LED Area Light

## Integral Motion Sensor Blue Tooth Module (IMSBTM)

**APPLICATION** — The IMSBTM is an AC-powered, Integral Motion Sensor Blue Tooth Module, that is highly versatile for various indoor and outdoor lighting fixtures. It provides **360° coverage**, making it optimal for open spaces and aislesways. This sensor is particularly suitable for environments such as parking lots, fuel stations, walkways, and storage facilities. The WHBL1 lens is crafted for fixtures at mounting heights ranging from **20 to 40 feet**, ensuring a coverage span of up to **80 feet in diameter** at the maximum height of **40 feet**. These lenses are designed with multiple cells and tiers, creating a dense pattern of coverage.

- Analog Sensor Built-in
- Replaceable lens options
- 120-277V Line Voltage input
- Daylight harvesting available

**OPERATION** — Typically, the sensor ramps lighting On to the selected High mode level when motion is detected and the ambient light level is below the hold off setpoint. After the sensor stops detecting movement and the time delay elapses, lights fade to the Low mode level. If there is no motion during the subsequent cut off time delay, the lights will turn Off. For dusk to dawn control, the integral photocell can switch the lights On and Off based on the ambient light level so that lighting remains on overnight even without motion detection.

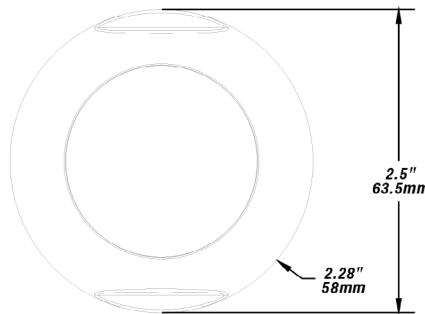
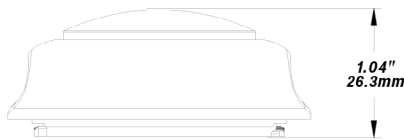
### ADDITIONAL FEATURES

- **Wireless Control System:** Bluetooth® Low Energy Mesh 4.2 & 5.0 protocols. Enables individual or group control of luminaires.
- **Mobile App Operation:** Intuitive interface for easy management.
- **Flexible Commissioning:** Components commissioned via the Mobile App. No need for a gateway during commissioning.
- **Sensor Integration:** Works seamlessly with various sensors. Enhances energy efficiency and responsive lighting.
- **Mesh Network Range:** Wireless communication up to 100 feet or more between devices. Ideal for diverse spatial configurations.
- **Internet Independence:** Commissioning and operation without internet access. Ensures functionality in various environments.
- **Security Measures:** Data encryption for mesh network security. Device access restricted without encrypted QR codes.
- **UL 1376 Verification:** LiteTrace, the manufacturer, has UL 1376 verification. Ensures adherence to stringent security standards.
- **In-House R&D Capabilities:** Full-stack, in-house R&D for networked sensors and controllers. Reflects a high level of control and innovation.
- **Industry Recognition:** One of the first systems listed to DLC's Networked Lighting Controls (NLC5). Compliance with industry standards and specifications.

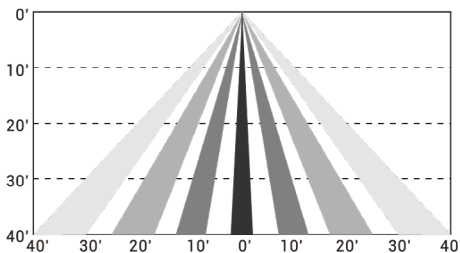


## SENSOR LENS FIELD OF VIEW AND DIMENSIONS

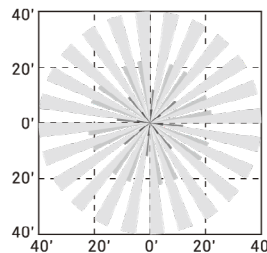
### WHBL1



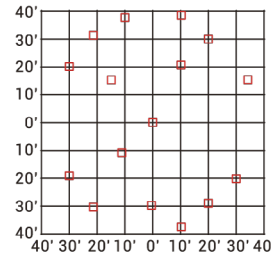
Coverage Side View



Coverage Top View



Detecting Spots For Ref



### Network Lighting Control App Instruction Manual

located on the Techlight Website -> Resources Page.  
Location shown below, **or** scan the QR code to the right.  
<https://techlight.com/pdf/IMSBTM%20Manual.pdf>

