



Catalog Number	
Project	Type

FEATURES & SPECIFICATIONS

APPLICATION — This fixture is designed for industrial, institutional and commercial applications as a direct replacement for traditional HID and fluorescent high bays. With 50,000 hours of life at L70 standard and a 5-year limited warranty the fixture maintenance cost is reduced substantially over time.

CONSTRUCTION — Low profile body with matte white sloped side members. Three extruded acrylic lens options available.

FINISH — Post painted housing and components with a Lighting White Polyester type paint which has a UV stabilizer included with a 93% reflectivity. Raw steel goes through our custom wash system with a mild solvent and pre treatment “rust inhibitor” before passing through a preheat oven. After the paint is applied the fixture then passes through the cure oven for maximum adhesion. Each fixture is painted to a minimum of 2-3 mil thickness for extra durability.

OPTICAL SYSTEM — Techlight/Horizon’s state of the art Diffusers set new benchmarks for performance in key metrics such as transmission efficiency for a given level of diffusion or hiding power, beating holographic, surface relief and bulk diffuser techniques. We enable high transmission and a pleasant uniform light at the same time.

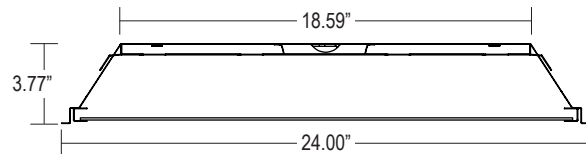
ELECTRICAL SYSTEM — Long life LED’s and high efficiency drivers work together to provide superior performance in an efficient package to deliver optimal performance. LED’s available in 3000K, 4000K and 5000K with a CRI >82. Electronic drivers are available in 120/277 volt applications. 0-10V dimming standard.

LISTINGS — ETL listed. LM79 and LM80 tested.

WARRANTY — The complete luminaire is covered by a 5-year limited warranty.



Enclosed LED High Bay LTR24 SERIES



Series	Housing Height	Length & Width
LTR24	3.77"	48.00" x 24.00"

ORDERING INFORMATION

Choose the bold face options for the appropriate luminaire configuration for your application and enter on the line above each fixture attribute. Accessories may be factory installed, depending on the particular accessory chosen, but still be ordered as a separate line item.

Example: **LTR24 6 H 40 1**

LTR24

Series	# of LED Strips	Drive Current	Color Temp/CCT	Voltage	Diffuser
LTR24	6 6 LED Strips	S Standard (700 mA)	30 3000K	1 Multi-Volt ¹	Blank .100" #12 Acrylic
	8 8 LED Strips	M Medium (1050 mA)	40 4000K		CA Clear Acrylic
	10 10 LED Strips	H High (1400 mA)	50 5000K		OA Opaque Acrylic

Options (Order as separate line items)

LEB13	1300 Lumen Emergency Ballast
FBF	Fast-Blow Fuse
SBF	Slow-Blow Fuse
AC63	6', 3/8" dia., Armored Flex Cable

NOTES

- Actual wattage may differ by ±5% while operating 120/277V ±10%.
- Multi-Volt is 120/277V.

LTR24 Enclosed LED High Bay

Technical Data

# of LED Strips	Drive Current	Color Temp	Delivered Lumens			System Wattage	L70 @ 25°C (hrs)	Amperage Draw	
			.100" #12 Acrylic	Clear Acrylic	Opaque Acrylic			120V	277V
6	S (700 mA)	3000K	13991	15554	13124	126W	>50K	1.05 A	0.46 A
		4000K	15005	16682	14076	126W	>50K	1.05 A	0.46 A
		5000K	14630	16265	13724	126W	>50K	1.05 A	0.46 A
	M (1050 mA)	3000K	20986	23331	19687	189W	>50K	1.58 A	0.69 A
		4000K	22508	25022	21114	189W	>50K	1.58 A	0.69 A
		5000K	21945	24397	20586	189W	>50K	1.58 A	0.69 A
	H (1400 mA)	3000K	27982	31108	26249	252W	>50K	2.10 A	0.91 A
		4000K	30010	33363	28152	252W	>50K	2.10 A	0.91 A
		5000K	29260	32530	27449	252W	>50K	2.10 A	0.91 A

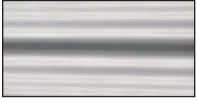
# of LED Strips	Drive Current	Color Temp	Delivered Lumens			System Wattage	L70 @ 25°C (hrs)	Amperage Draw	
			.100" #12 Acrylic	Clear Acrylic	Opaque Acrylic			120V	277V
8	S (700 mA)	3000K	16989	18887	15937	168W	>50K	1.40 A	0.61 A
		4000K	18221	20256	17092	168W	>50K	1.40 A	0.61 A
		5000K	17765	19750	16665	168W	>50K	1.40 A	0.61 A
	M (1050 mA)	3000K	25483	28331	23905	252W	>50K	2.10 A	0.91 A
		4000K	27331	30384	25638	252W	>50K	2.10 A	0.91 A
		5000K	26648	29625	24998	252W	>50K	2.10 A	0.91 A
	H (1400 mA)	3000K	33978	37774	31874	336W	>50K	2.80 A	1.22 A
		4000K	36441	40513	34185	336W	>50K	2.80 A	1.22 A
		5000K	35530	39500	33330	336W	>50K	2.80 A	1.22 A

# of LED Strips	Drive Current	Color Temp	Delivered Lumens			System Wattage	L70 @ 25°C (hrs)	Amperage Draw	
			.100" #12 Acrylic	Clear Acrylic	Opaque Acrylic			120V	277V
10	S (700 mA)	3000K	19987	22220	18749	210W	>50K	1.75 A	0.76 A
		4000K	21436	23831	20109	210W	>50K	1.75 A	0.76 A
		5000K	20900	23235	19606	210W	>50K	1.75 A	0.76 A
	M (1050 mA)	3000K	29980	33330	28124	315W	>50K	2.63 A	1.14 A
		4000K	32154	35746	30163	315W	>50K	2.63 A	1.14 A
		5000K	31350	34853	29409	315W	>50K	2.63 A	1.14 A
	H (1400 mA)	3000K	39974	44440	37498	420W	>50K	3.50 A	1.52 A
		4000K	42872	47662	40217	420W	>50K	3.50 A	1.52 A
		5000K	41801	46471	39212	420W	>50K	3.50 A	1.52 A

LTR24 Enclosed LED High Bay

Lens Options

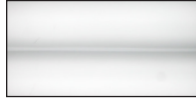
.100" #12 Acrylic



Clear Acrylic



Opaque Acrylic



Horizon Linear Lighting
2707 Satsuma Drive
Dallas, TX, 75229
Phone: 214-350-0591, 800-225-0727, Fax: 214-350-9137
www.horizonlightingllc.com

All dimensions and specifications are subject to change without notice.