



Catalog Number	
Project	Type

Features & Specifications

Application

This fixture is designed for recessed ceiling mounting application. Perfect for commercial office spaces, schools, hospitals or hospitals or retail merchandising areas.

Features

Optimized for T8 or T5 lamp performance. Computer-aided housing design allows for optimum luminaire efficiency. Cam action latches and die formed T-hinges for door insertion from either side. Nominal 3" deep louver for excellent cut off and glare control.

Construction

Housing constructed of structurally embossed, heavy gauge, cold rolled steel. Die-formed flat steel door with mitered corners for clean appearance. Wire way covers snap in for easy attachment and removal. Access plate provides top access to wire way.

Electrical System

ETL listed. Suitable for damp locations. Damp location emergency pack must be specified separately. Ballasts are solid-state electronic. Ballasts and lamp holders are replaceable without removing from ceiling. Discrete voltage must be specified for emergency pack options when wired with flex.

Finish

All reflective surfaces are finished with a high reflectance, lighting fixture white polyester powder.

Ordering Nomenclature

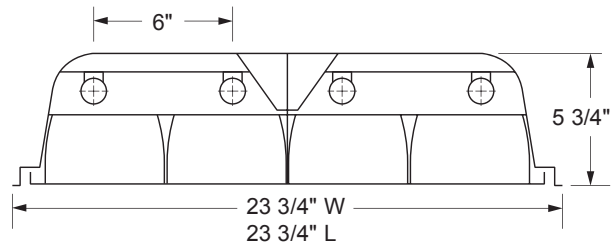
Ex: (2X4 Parabolic Troffer, 3 Lamps, F32T8, No Air Function, 18 Cell, Diffuse Silver Louvers, Multi-Volt = PT2332B181D)

PT SERIES

PARABOLIC TROFFER



DIMENSIONS

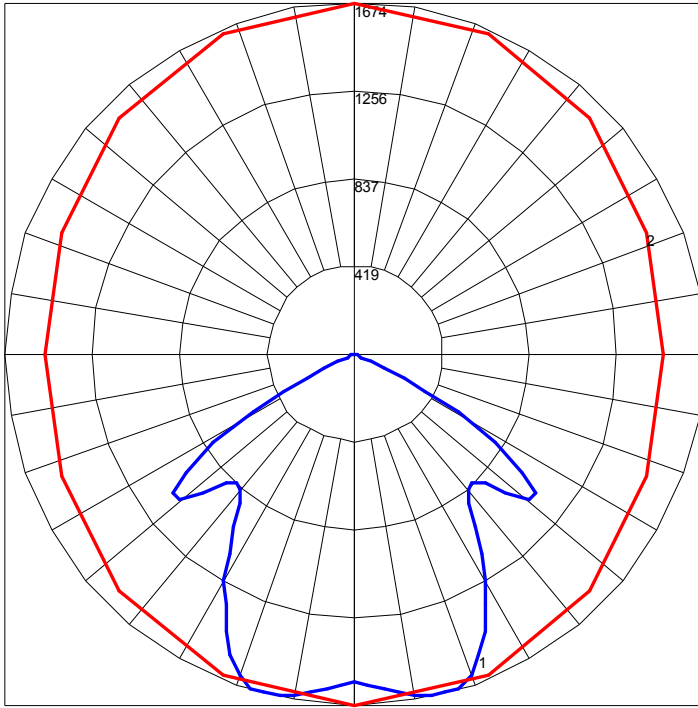


Please contact your Horizon Sales Representative for more information.
All dimensions subject to change without notice.

--	--	--	--	--	--	--	--	--	--

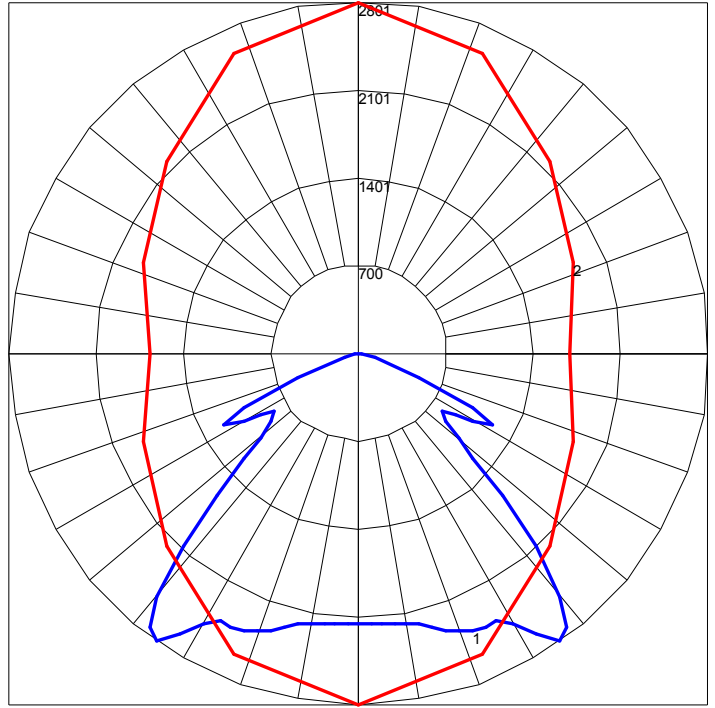
SERIES	NUMBER OF LAMPS	WATTAGE/TYPE	AIR FUNCTION	CELL NUMBER	LOUVER FINISH	VOLTAGE	REFLECTOR	BALLAST FACTOR	OPTIONS
PT1 1X4		17 - 17W T8, 24"	B - No Air Function	6	1 - Semi	D - Multi-Volt	BLANK - None	10RS - ≤10% THD, Rapid Start	
PT2 2X4		25 - 25W T8, 24"		9	2 - Specular Low	1 - 120V	A - Silver Reflector	P - Program Start	
PT22 2X2	2	U31 - 31W T8 U, 1 1/2" Leg	A - Air Supply /Return	12	Iridescent (Silver Only)	2 - 277V		20 - ≤20% THD	
	3	U316 - 31W 8T U, 6" Leg	H - Heat Removal	16	2 - Specular	3 - 347V		EB5 - 500 Lumen T8 Emergency Ballast	
	4	CF39 - 39W TT5, 24"	D - Dual Function Supply / Return	18	Mirrored Low Iridescent (Mirror Only)	4 - 480V		EB7 - 700 Lumen T8 Emergency Ballast	
		CF40 - 40W TT5, 24"		24				EB14 - 1400 Lumen T8 Emergency Ballast	
		CF50 - 50W TT5, 24"		27				EB30 - 3000 Lumen T8 Emergency Ballast	
		CF55 - 55W TT5, 24"		32				EB5T5 - 500 Lumen T5 Emergency Ballast	
		1X4 and 2X4		36				EB7T5 - 700 Lumen T5 Emergency Ballast	
		28T8 - 28W T8, 48"		64				EB14T5 - 1400 Lumen T5 Emergency Ballast	
		28T5 - 28W T5, 46"						IC - Insulation Contact Rated	
		30 - 30W T8, 48"						FBF - Fast-Blow Fuse	
		32 - 32W T8, 48"						SBF - Slow-Blow Fuse	
		48HO - 60W 800mA, 48"						AC63 - 6', 3/8" dia., Armored Flex Cable	
		54 - 54W T5 HO, 48"						SJ6 - 6', 3/8" dia., 16/3 SJ Cord	
								SJ10 - 10', 3/8" dia., 16/3 SJ Cord	
								SJ15 - 15', 3/8" dia., 16/3 SJ Cord	
								PWO - Palletized without Cartons	
								CD - Continuous Dimming (T8)	
								SD - Step Dimming (T8)	
								CD5 - Continuous Dimming (T5)	
								SD5 - Step Dimming (T5)	
								WOC - 120/347 Volt Sensor	
								WOC1 - 480 Volt Sensor	
								C1 - 6' Cord w/120V Nema Plug 16/3 15A	
								C2 - 6' Cord w/277V Nema Plug 16/3 15A	
								C3 - 10' Cord w/277V Nema Plug 16/3 20A	
								C4 - 6' Cord w/480V Nema Plug 16/3 20A	
								IO - Inboard/Outboard (2 lamp-2 lamp)	
								IO1 - Inboard/Outboard (1 lamp-2 lamp)	
								IO2 - Inboard/Outboard (1 Lamp, 3 Lamp)	

POLAR GRAPH



Maximum Candela = 1674 Located At Horizontal Angle = 90, Vertical Angle = 15
1 - Vertical Plane Through Horizontal Angles (90 - 270) (Through Max. Cd.)
2 - Horizontal Cone Through Vertical Angle (15) (Through Max. Cd.)

POLAR GRAPH



Maximum Candela = 2801 Located At Horizontal Angle = 90, Vertical Angle = 35
1 - Vertical Plane Through Horizontal Angles (90 - 270) (Through Max. Cd.)
2 - Horizontal Cone Through Vertical Angle (35) (Through Max. Cd.)