



| | |
|----------------|------|
| Catalog Number | |
| Project | Type |

FEATURES & SPECIFICATIONS

APPLICATION — The RBF Flood Light is a compact HID light ideal for site, landscape, flag pole, and general security lighting. The sleek curve and contemporary look make them more aesthetically pleasing than regular commercial floods. A number of shielding options are available for customized effects.

CONSTRUCTION — The housing and door frame are constructed of die cast aluminum. The flat tempered glass lens is sealed in place and a door gasket is provided for weather tight protection. ETL listed for wet locations.

FINISH — A Super Durable Polyester powder coat finish is electrostatically applied in our state of the art paint facility. Standard colors available: Black, Bronze, US Green, White. Custom colors available upon request.

OPTICAL SYSTEM — Made with a state of the art high performance reflectors that use high gloss components to achieve a precise photometric distributions. It is designed to produce a variety of symmetrical patterns to cover large areas with uniformity. Available with horizontal flood, vertical flood, and horizontal spot reflector systems.

ELECTRICAL SYSTEM — Available in 50W thru 175W standard metal halide, pulse-start metal halide, mercury vapor, high pressure sodium and 42W 120V fluorescent. Comes standard with a 4KV pulse rated medium base socket (HID models). Each 60HZ CWA Multi-Tap¹ or 480V ballast is pre-wired and installed for convenience.

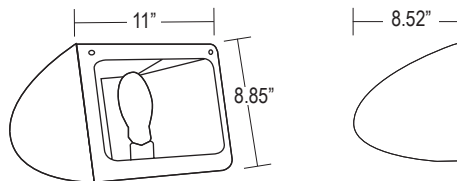
MOUNTING — Standard mounting options include 1/2" adjustable knuckle fitter. Additional mounting options such as a 2" adjustable knuckle are available.



Round Back Flood RBF SERIES



Fixture shown with 2AF slip fitter which is ordered separately.



| Series | Housing Height | Length & Width |
|------------|----------------|----------------|
| RBF | 8.85" | 8.52" x 11.00" |

ORDERING INFORMATION

Choose the bold face options for the appropriate luminaire configuration for your application and enter on the line above each fixture attribute. Accessories may be factory installed, depending on the particular accessory chosen, but still be ordered as a separate line item.

Example: **RBF2A-2-BZ-PS**

| RBF | | Voltage | | Reflector | | Finish | | Pulse-Start | |
|------------|--|---|--|--|--|-----------------------|--|-------------|--|
| Series | Wattage/Source | | | | | | | | |
| RBF | 1 100W Mercury Vapor 2 175W Mercury Vapor 3 50W PS Metal Halide 4 70W PS Metal Halide 5 100W PS Metal Halide 6 150W PS Metal Halide 7 175W Metal Halide | 8 70W High Pressure Sodium 9 100W High Pressure Sodium 10 150W High Pressure Sodium 12 42W PL Fluorescent ² | A Multi-Tap ^{1,2} B 480V | 1 Horizontal Flood 2 Vertical Flood 3 Horizontal Spot | BK Black BZ Bronze GR US Green WH White SP Special ³ | PS Pulse-Start | | | |

Accessories (Order as separate line items)

| | |
|--|--------------------------------------|
| B01 Tree Base | P1000PC Button Type Photocell |
| 2AF 2" Adjustable Slip Fitter | S77 RBF Visor Shield |
| P4025D 2-3/8" OD Tenon Mount Adaptor | S78 RBF Bug Free Visor Shield |
| TLSBBJB Brass Junction Box | S79 RBF Louvered Shield |
| LMSB' 20" x 2.5" Mounting Stake (Brass) | |
| LMS' 20" x 2.5" Mounting Stake (SCH 40 PVC) | |
| LMSZ-BK' 20" x 2.5" Mounting Stake (Zinc Top Painted Black) | |

NOTES

- Multi-Volt is 120/208/240/277V wired 277V
- 42W Fluorescent is provided with a 120V Ballast and is available with the Vertical Flood Reflector only. Use Multi-Tap designation when ordering.
- Custom RAL color matching is available. Contact your Techlight sales representative for additional information.
- Line voltage bullets require LARGE stakes.

RBF Round Back Flood

MOUNTING ACCESSORIES

B01
Tree Base



P4025D
2-3/8" OD Tenon Mount Adaptor



2AF
2" Adjustable Slip Fitter



TLSBBJB
Brass Junction Box

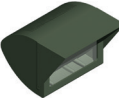


LMSB, LMS, LMSZ-BK
20" x 2.5" Mounting Stakes

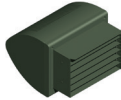


ADDITIONAL FIXTURE ACCESSORIES

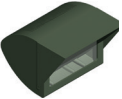
S77
RBF Visor Shield



S79
RBF Louvered Shield



S78
RBF Bug Free Visor Shield



Techlight, Inc.
2707 Satsuma Drive
Dallas, TX, 75229
Phone: 214-350-0591, 800-225-0727, Fax: 214-350-9137
www.techlight.com