



Catalog Number	
Project	Type

## FEATURES & SPECIFICATIONS

**APPLICATION** – The SL Series of sign lighters offers an affordable sign lighting option for any sign, store front, walkway or billboard. Energy efficient fluorescent lamps keep energy usage costs down while maintaining maximum light levels.

**FEATURES** – The fixture is a direct light fixture. It can be mounted in any direction. The fixture is ideal for direct general illumination with no glare and an aesthetically pleasing housing.

**CONSTRUCTION** – Constructed of extruded aluminum, the weatherproof housings can be rotated over 180°. Provided with a durable acrylic lens.

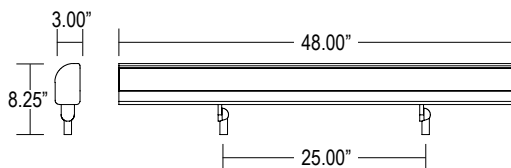
**FINISH** – A Super Durable Polyester powder coat finish is electrostatically applied in our state of the art paint facility. Standard colors available: Black, Bronze, US Green, White. Custom colors available upon request.

**ELECTRICAL SYSTEM** – ETL listed. Suitable for wet locations. Wet location emergency pack must be specified separately. Ballasts are solid-state electronic ≤10% THD, Rapid Start.

**MOUNTING** – The fixture is provided with two ½" adjustable knuckles. 30" stand-off brackets are available for wall mounting. Two fixture limit when mounting in a continuously connected row.



Sign Lighter  
**SL SERIES**



Dimensions shown are for 48" Unit Only. See page two for additional fixture dimensions.

Series	Housing Height	Length & Width
<b>SL</b>	8.25"	48.00" x 3.00"

## ORDERING INFORMATION

Choose the bold face options for the appropriate luminaire configuration for your application and enter on the line above each fixture attribute. Accessories may be factory installed, depending on the particular accessory chosen, but still be ordered as a separate line item.

Example: **SL 1 32-48 BZ (2) 132216**

Series	Number of Lamps	Wattage/Source	Finish
<b>SL</b>	<b>1</b> <b>2<sup>1</sup></b>	<b>17-24</b> 17W T8, 24" <b>24-24</b> 124W T5HO, 24" <b>25-36</b> 25W T8, 36" <b>39-36</b> 39W T5HO, 36" <b>32-48</b> 32W T8, 48" <b>54-48</b> 54W T5HO, 48"	<b>BK</b> Black <b>BZ</b> Bronze <b>GR</b> US Green <b>WH</b> White <b>SP</b> Special <sup>2</sup>

### Accessories (Order as separate line items)

<b>132216<sup>3</sup></b> 30" Wall Mount Stand-Off Bracket (one)	<b>SMSB<sup>3</sup></b> 12" x 1" Mounting Stake (Brass)
<b>132216-24<sup>3</sup></b> 24" Wall Mount Stand-Off Bracket (one)	<b>MMSB<sup>3</sup></b> 18" x 1" Mounting Stake (Brass)
<b>132216-18<sup>3</sup></b> 18" Wall Mount Stand-Off Bracket (one)	<b>LMSB<sup>3</sup></b> 20" x 2.5" Mounting Stake (Brass)
<b>TLSBBJB<sup>3</sup></b> Brass Junction Box	<b>LMS<sup>3</sup></b> 20" x 2.5" Mounting Stake (SCH 40 PVC)
	<b>LMSZ-BK<sup>3</sup></b> 20" x 2.5" Mounting Stake (Zinc Top Painted Black)

#### NOTES

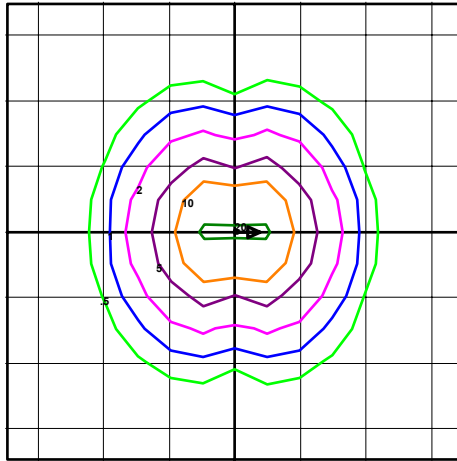
- T8 models are only available in 1 (one) lamp configurations.
- Custom RAL color matching is available. Contact your Techlight sale representative for additional information.
- Bracket Kit consists of two mounting brackets. Must Order 2 (two) per fixture.

# SL Sign Lighter

## PHOTOMETRICS

### IES INDOOR REPORT PHOTOMETRIC FILE NAME: SL154-48

1 LAMP, 54W T5 HO  
SIGNLIGHTER

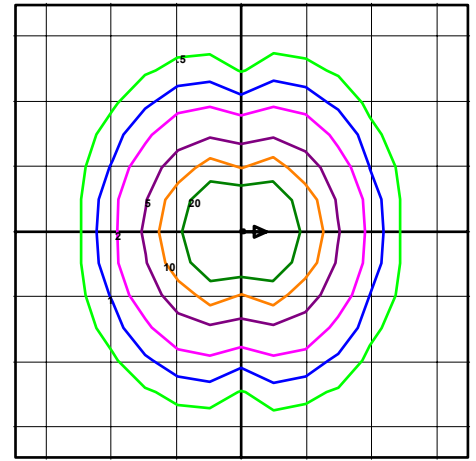


TECHLIGHT INC.  
SL154-48

Horizontal Footcandles  
Scale: 1 inch = 5 Ft.  
Light Loss Factor = 1.00  
Lumens Per Lamp = 5000  
Total Lamp Lumens = 5000  
Mounting Height = 5.00 Ft  
Maximum Calculated Value = 22.04 Fc  
Arrangement: Single

### IES INDOOR REPORT PHOTOMETRIC FILE NAME: SL254-48

2 LAMP, 54W T5 HO  
SIGNLIGHTER



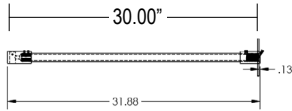
TECHLIGHT INC.  
SL254-48

Horizontal Footcandles  
Scale: 1 inch = 5 Ft.  
Light Loss Factor = 1.00  
Lumens Per Lamp = 10000  
Total Lamp Lumens = 10000  
Mounting Height = 5.00 Ft  
Maximum Calculated Value = 44.08 Fc  
Arrangement: Single

## MOUNTING ACCESSORIES

### 132216<sup>2</sup>

30" Wall Mount Stand-Off Bracket (one)



### TLSBBJB<sup>2</sup>

Brass Junction Box



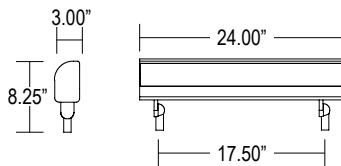
### SMSB, MMSB, LMSB, LMS, LMSZ-BK<sup>3</sup>

12" x 1", 18" x 1", 20" x 2.5" Mounting Stakes



## ADDITIONAL FIXTURE DIMENSIONS

Dimensions for 24" Unit



Dimensions for 36" Unit



### NOTES

- 1 Bracket Kit consists of two mounting brackets.
- 2 Order 2 (two) per fixture.



**Techlight, Inc.**  
2707 Satsuma Drive  
Dallas, TX, 75229  
Phone: 214-350-0591, 800-225-0727,  
[www.techlight.com](http://www.techlight.com)