



LED Step Lights

Catalog Number	
Project	Type



SERIES	HOUSING HEIGHT	LENGTH & DEPTH
STEPLIGHT	2.9"	6.85" x 4.25"

FEATURES & SPECIFICATIONS

CONSTRUCTION — The die cast aluminum housing and separate pour kit allow for easy installation into virtually any surface. Both the louvered and open faceplates are constructed of cast aluminum and the grill faceplate is made of stainless steel.

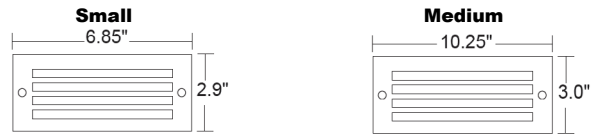
OPTICAL SYSTEM — The step lights are available with the choice of horizontal louvers or an open faceplate in a black finish, or a stainless steel grill. All fixtures come with a frosted glass lens.

ELECTRICAL SYSTEM — A 2.5 watt DC base LED lamp produces approximately 223 Lumens of Warm White light in the Small model while two 2.5 watt DC base LED lamps produces approximately 446 Lumens of Warm White light in the Medium model. A low voltage power supply is required to power the integral LED driver.

MOUNTING — Stainless steel hardware included. Made for recessed mounting in virtually any surface. Concrete pour kit is available. Suitable for wet locations.

FINISH — The fixture is finished with a Super Durable Powdercoat Paint with a UV inhibitor to make it impervious to atmospheric elements.

FIXTURE DIMENSIONS



ORDERING INFORMATION

Choose the bold face options for the appropriate luminaire configuration for your application and enter on the line above each fixture attribute. Accessories may be factory installed, depending on the particular accessory chosen, but still be ordered as a separate line item.

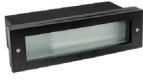
EXAMPLE:
STEPLIGHT-5-6

STEPLIGHT	FACEPLATE	WATTAGE/SOURCE	POUR KIT
Small & Medium	1 = Small Black Louvered 2 = Small Stainless Steel Grill 6 = Medium Open Faceplate	3 = 2.5 Watt 3000K Warm White LED lamp (Small Housing Only) 6 = Two 2.5 Watt 3000K Warm White LED lamp (Medium Housing Only)	102058 = Small Stainless Steel Pour Kit 102117 = Medium Stainless Steel Pour Kit Pour Kits may be pre-shipped for rough-in. Order separately.

FIXTURE FACEPLATE OPTIONS (Order as separate catalog number)



Black Louvered Faceplate



Open Faceplate



Grill Faceplate

TRANSFORMER ENCLOSURES (Order as separate catalog number)



ELV300
300W LV Transformer Enclosure
ELV600
600W LV Transformer Enclosure



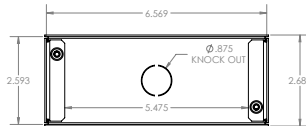
ELV900
900W LV Transformer Enclosure
ELV1200
1200W LV Transformer Enclosure

POUR KIT DIMENSIONS

Pour Kits may be pre-shipped for rough-in. Order separately.

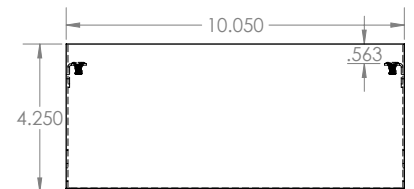
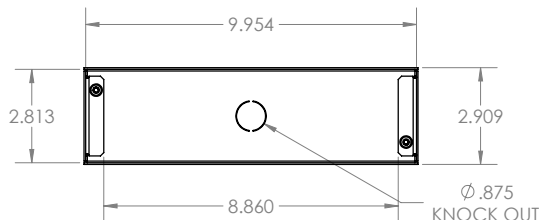
102058

Small Stainless Steel Pour Kit



102117

Medium Stainless Steel Pour Kit



WARNING: Maintenance performed including the replacement of LED bricks while power is still supplied to the luminaire may result in system failures and will void the warranty.

