



Catalog Number	
Project	Type

## Features & Specifications

### Application

This fixture is an excellent choice for commercial industrial and retail applications such as storage/utility areas, shops, task and general area lighting.

### Features

Optimized for T8 or T5 lamp performance. Premium housing crimped along sides for extra rigidity and straight alignment. Features pressure lock lamp holders. Accepts optional plug-in wiring feature for continuous row installation. Alignment couplers furnished for continuous row installation. Can be surface or pendant mounted, individual or in rows. Numerous KO's for easy installation.

### Construction

Fixture housing, lamp holder brackets, end sections and channel over constructed of heavy gauge die-formed steel. Crimped along sides for extra rigidity and straight alignment.

### Electrical System

ETL listed. Suitable for damp locations. Damp location emergency pack must be specified separately. Ballasts are solid-state electronic. Ballasts and lamp holders are replaceable without removing from ceiling. Discrete voltage must be specified for emergency pack options when wired with flex.

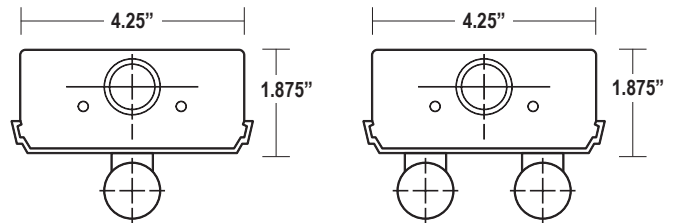
### Finish

All reflective surfaces are finished with a high reflectance, lighting fixture white polyester powder.

## S SERIES SHALLOW ECONOMY STRIP



### DIMENSIONS



Please contact your Horizon Sales Representative for more information.  
All dimensions subject to change without notice.

### Ordering Nomenclature

Ex: (Economy Strip, 2, F32T8, 4', Multi-Volt =S232D)

--	--	--	--	--

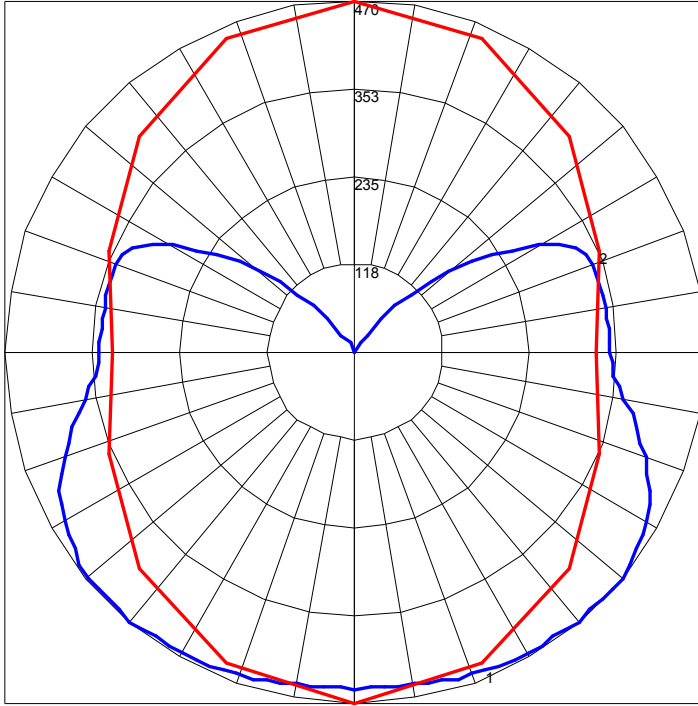
SERIES	NUMBER OF LAMPS	WATTAGE	VOLTAGE	BALLAST FACTOR	OPTIONS
<b>S</b> <b>SA (Aluminum)</b>	<b>1</b>	<b>14</b> - 14W T5, 22"	<b>D</b> - Multi-Volt	<b>BLANK</b> - Normal	<b>10RS</b> - ≤10% THD, Rapid Start
For tandem double-length unit, add suffix T Ex: ST	<b>2</b> (Per cross section)	<b>17</b> - 17W T8, 24"	<b>1</b> - 120V	<b>H</b> - High	<b>P</b> - Program Start
		<b>21</b> - 21W, T5, 34"	<b>2</b> - 277V	<b>L</b> - Low	<b>20</b> - ≤20% THD
		<b>24</b> - 24W T5HO, 22"	<b>3</b> - 347V		<b>EB5</b> - 500 Lumen T8 Emergency Ballast
		<b>25</b> - 25W, T8, 36"	<b>4</b> - 480V		<b>EB7</b> - 700 Lumen T8 Emergency Ballast
		<b>28T5</b> - 28W T5, 46"			<b>EB14</b> - 1400 Lumen T8 Emergency Ballast
		<b>28T8</b> - 28W T8, 48"	*Multi-Volt is 120/277V		<b>EB30</b> - 3000 Lumen T8 Emergency Ballast
		<b>32</b> - 32W T8, 48"			<b>EB5T5</b> - 500 Lumen T5 Emergency Ballast
		<b>39</b> - 39W, T5HO, 34"			<b>EB7T5</b> - 700 Lumen T5 Emergency Ballast
		<b>48HO</b> - 60W 800mA, 48"			<b>EB14T5</b> - 1400 Lumen T5 Emergency Ballast
		<b>54</b> - 54W T5HO, 46"			<b>FBF</b> - Fast-Blow Fuse
		<b>59</b> - 59W T8, 96"			<b>SBF</b> - Slow-Blow Fuse
		<b>86</b> - 86W T8HO, 96"			<b>AC63</b> - 6', 3/8" dia., Armored Flex Cable
		<b>96T12HO</b> - 110W T12HO, 96"			<b>SJ6</b> - 6', 3/8" dia., 16/3 SJ Cord
					<b>SJ10</b> - 10', 3/8" dia., 16/3 SJ Cord
					<b>SJ15</b> - 15', 3/8" dia., 16/3 SJ Cord
					<b>PWO</b> - Palletized without Cartons
					<b>CD</b> - Continuous Dimming (T8)
					<b>SD</b> - Step Dimming (T8)
					<b>CD5</b> - Continuous Dimming (T5)
					<b>SD5</b> - Step Dimming (T5)
					<b>WOC</b> - 120/347 Volt Sensor
					<b>WOC1</b> - 480 Volt Sensor
					<b>C1</b> - 6' Cord w/120V Nema Plug 16/3 15A
					<b>C2</b> - 6' Cord w/277V Nema Plug 16/3 15A
					<b>C3</b> - 10' Cord w/277V Nema Plug 16/3 20A
					<b>C4</b> - 6' Cord w/480V Nema Plug 16/3 20A
					<b>WH34</b> -Wiring Harness 3-Wire 4-Foot
					<b>WH44</b> -Wiring Harness 4-Wire 4-Foot

WH54- Wiring Harness 5-Wire 4-Foot  
 WH38- Wiring Harness 3-Wire 8-Foot  
 WH48- Wiring Harness 4-Wire 8-Foot  
 WH58- Wiring Harness 5-Wire 8-Foot  
 AR2 - 2' Assymetrical Reflector  
 AR3 - 3' Assymetrical Reflector  
 AR4 - 4' Assymetrical Reflector  
 10JC - (3)S Hooks and 10' Jack Chain Set

THE - Tong Hanger, End Mount (2)  
 THS - Tong Hanger, Side Mount (2)  
 G10 - 10' Aircraft Cable w/ 12" Arms (2)  
 G15 - 15' Aircraft Cable w/ 12" Arms (2)  
 G20 - 20' Aircraft Cable w/ 12" Arms (2)  
 SWG2 - 2' Wire Guard For Strip  
 SWG3 - 3' Wire Guard For Strip  
 SWG4 - 4' Wire Guard For Strip

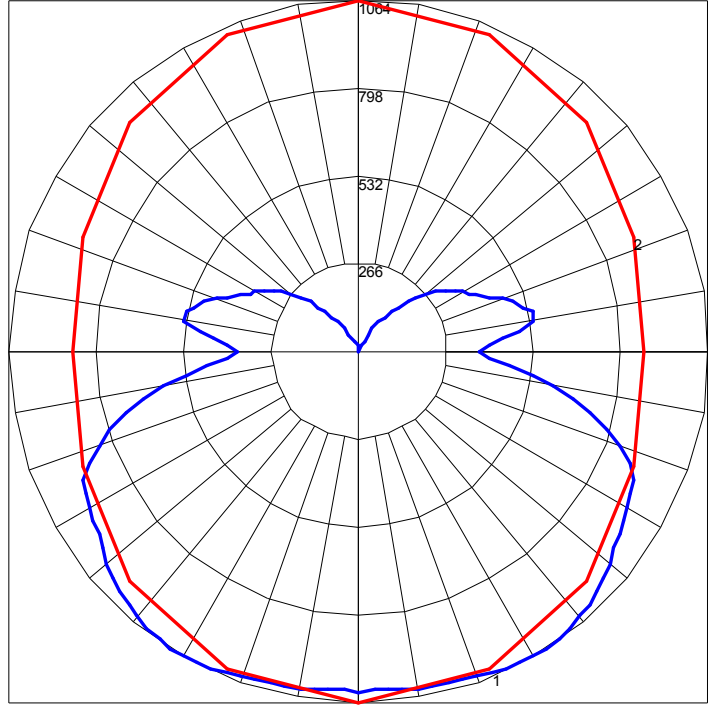
Energy Saving Tip!  
 Our Occupancy Sensor  
 option instantly turns  
 lights on and off

POLAR GRAPH



Maximum Candela = 470 Located At Horizontal Angle = 90, Vertical Angle = 40  
# 1 - Vertical Plane Through Horizontal Angles (90 - 270) (Through Max. Cd.)  
# 2 - Horizontal Cone Through Vertical Angle (40) (Through Max. Cd.)

POLAR GRAPH



Maximum Candela = 1064 Located At Horizontal Angle = 90, Vertical Angle = 30  
# 1 - Vertical Plane Through Horizontal Angles (90 - 270) (Through Max. Cd.)  
# 2 - Horizontal Cone Through Vertical Angle (30) (Through Max. Cd.)