



Catalog Number	
Project	Type

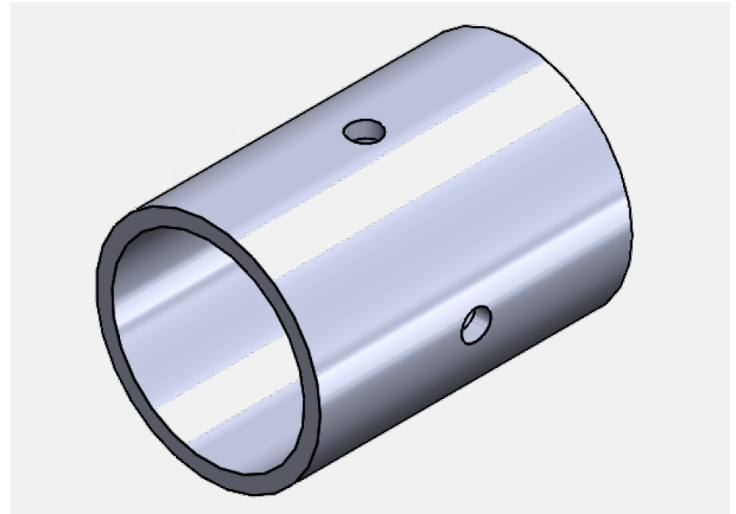
## FEATURES & SPECIFICATIONS

**APPLICATION** — The Tenon Adapter (P/N 132838BK) is designed to convert a 2-3/8" tenon to a 2-7/8" tenon, enabling compatibility between existing poles, brackets, and accessories requiring a larger mounting size. It provides a secure, reliable interface for lighting brackets, arms, and other Techlight accessories where precise tenon conversion is required. Its compact 4" length ensures proper alignment and structural engagement without adding bulk to the installation. Various lengths are available; consult factory for options.

**CONSTRUCTION** — The adapter is manufactured from durable steel, with a 2.875" outer diameter and 2.469" inner diameter engineered to ensure proper fit and structural integrity. Four (4) 10-24 × 1/4" hex set screws, positioned at 90° intervals, securely lock the adapter in place and minimize movement under outdoor conditions. All dimensional data is taken directly from the Techlight engineering drawing and listed in inches.

**FINISH** — The adapter is finished in a black painted coating, providing corrosion resistance and long-term durability in outdoor environments. The finish blends seamlessly with Techlight poles, brackets, and accessory hardware for a clean, uniform appearance.

## Tenon Conversion Adapter — T2-3/8 to T2-7/8 **132838BK**



## ADAPTER DIMENSIONS

## ORDERING INFORMATION

Choose the bold face options for the appropriate luminaire configuration for your application and enter on the line above each fixture attribute. Accessories may be factory installed, depending on the particular accessory chosen, but still be ordered as a separate line item.

<b>132838</b>	<b>BK</b>
<b>Series</b>	<b>Finish</b>
<b>P132838</b>	<b>BK</b> Black

Example: **132838BK**

