



Catalog Number	
Project	Type

Features & Specifications

Application

This fixture is designed for recessed ceiling mounting in a clean room environment.

Features

Optimized for T8 or T5 lamp performance. Computer-aided housing design allows for optimum luminaire efficiency.

Construction

Housing constructed of structurally embossed, heavy gauge, cold rolled steel. Die-formed flat steel door with mitered corners for clean appearance. Wire way covers snap in for easy attachment and removal. Access plate provides top access to wire way. Fixture comes with a triple neoprene gasket and inverted lens for ease of maintenance. Door frame and lens are siliconed together on inside of fixture so that it is not visible from below.

Electrical System

Suitable for damp locations. Damp location emergency pack must be specified separately. Ballasts are solid-state electronic $\leq 10\%$ THD Instant Start. Ballasts and lamp holders are replaceable without removing from ceiling. Discrete voltage must be specified for emergency pack options when wired with flex.

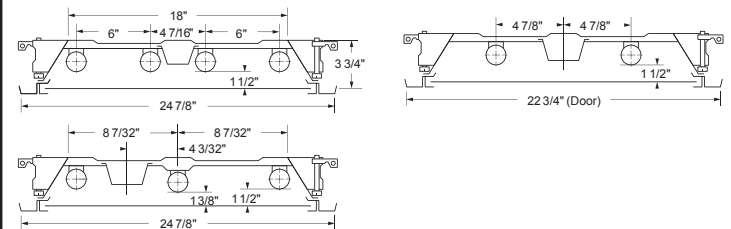
Finish

All reflective surfaces are finished with a high reflectance (93%), lighting fixture white polyester powder.

CRT SERIES CLEANROOM LAY-IN TROFFER



DIMENSIONS



Ordering Nomenclature

Ex: (2X4 Cleanroom Lay-In Troffer, 4 Lamps, F32T8, #12 Acrylic Pattern, .100" thick lens, White Flush Door, Multi-Volt = CRT2432SWD)

--	--	--	--	--	--	--	--	--	--

SERIES	NUMBER OF LAMPS	WATTAGE/TYPE	AIR FUNCTION	DIFFUSER	DOOR FRAME	VOLTAGE	BALLAST FACTOR	OPTIONS
CRT1	1X4	17 - 17W T8, 24"	BLANK	BLANK-#12 Acryl .100" thick	SW-Flush Steel White	D - Multi-Volt	BLANK - Normal	10RS - $\leq 10\%$ THD, Rapid Start
CRT2	2	25 - 25W T8, 24"	- No Air Function	A -#12 Acrylic .125" thick	AN -Flush Alum Natural	1 - 120V	H - High	P - Program Start
2X4	3	U31 - 31W T8 U, 1 1/2" Leg	1 - Air Supply /Return	B -#12 Acrylic .156" thick	AB -Flush Alum Matte Black	2 - 277V	L - Low	20 - $\leq 20\%$ THD
CRT22	4	U316 - 31W 8T U, 6" Leg	2 - Heat Removal	C -#15 Acrylic .125" thick	AW-Flush Alum White	3 - 347V		EB5 - 500 Lumen T8 Emergency Ballast
2X2		CF39 - 39W TT5, 24"	3 - Dual Function Supply / Return	D -#15 Acrylic .140" thick	RN - Regressed Alum Natural	4 - 480V		EB7 - 700 Lumen T8 Emergency Ballast
		CF40 - 40W TT5, 24"			RB - Regressed Alum Matte Black			EB14 - 1400 Lumen T8 Emergency Ballast
		CF50 - 50W TT5, 24"			RW- Regressed Alum White			EB30 - 3000 Lumen T8 Emergency Ballast
		CF55 - 55W TT5, 24"						EB5T5 - 500 Lumen T5 Emergency Ballast
		1X4 and 2X4						EB7T5 - 700 Lumen T5 Emergency Ballast
		28T8 - 28W T8, 48"						EB14T5 - 1400 Lumen T5 Emergency Ballast
		28T5 - 28W T5, 46"						IC - Insulation Contact Rated
		30 - 30W T8, 48"						FBF - Fast-Blow Fuse
		32 - 32W T8, 48"						SBF - Slow-Blow Fuse
		48HO - 60W 800mA, 48"						AC63 - 6', 3/8" dia., Armored Flex Cable
		54 - F54T5HO, 46"						SJ6 - 6', 3/8" dia., 16/3 SJ Cord
								SJ10 - 10', 3/8" dia., 16/3 SJ Cord
								SJ15 - 15', 3/8" dia., 16/3 SJ Cord
								PWO - Palletized without Cartons
								CD - Continuous Dimming (T8)
								SD - Step Dimming (T8)
								CD5 - Continuous Dimming (T5)
								SD5 - Step Dimming (T5)
								WOC - 120/347 Volt Sensor
								WOC1- 480 Volt Sensor
								C1 - 6' Cord w/120V Nema Plug 16/3 15A

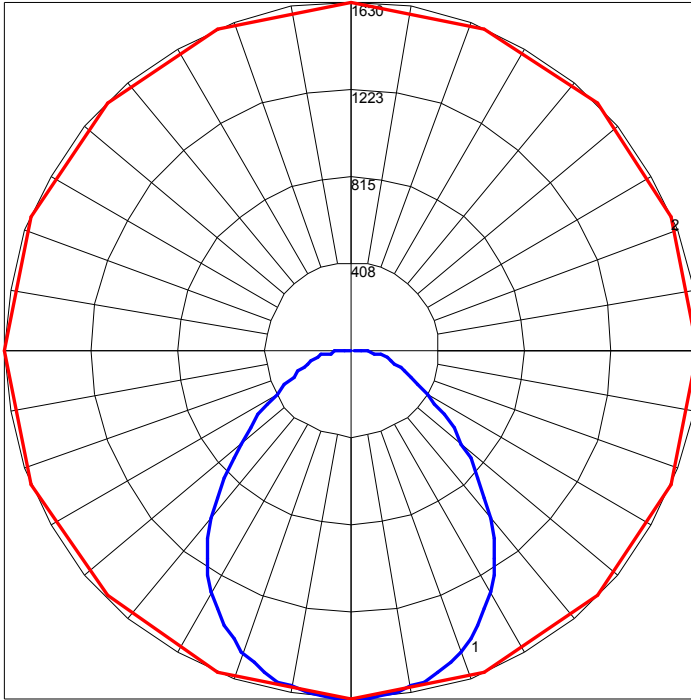
ADDITIONAL OPTIONS

- C2 - 6' Cord w/277V Nema Plug 16/3 15A
- C3 - 10' Cord w/277V Nema Plug 16/3 20A
- C4 - 6' Cord w/480V Nema Plug 16/3 20A
- IO - Inboard/Outboard (2 lamp-2 lamp)
- IO1 - Inboard/Outboard (1 lamp-2 lamp)
- IO2 - Inboard/Outboard (1 Lamp, 3 Lamp)

- FK14 - 1x4 Flange Kit
- FK22 - 2x2 Flange Kit
- FK24 - 2x4 Flange Kit

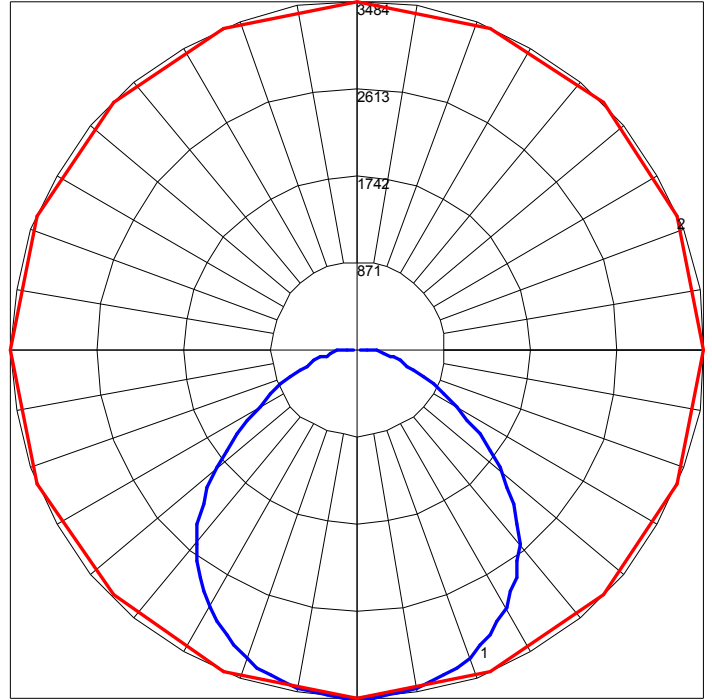
Energy Saving Tip!
Our Occupancy Sensor option instantly turns lights on and off

POLAR GRAPH



Maximum Candela = 1630 Located At Horizontal Angle = 0, Vertical Angle = 2.5
1 - Vertical Plane Through Horizontal Angles (0 - 180) (Through Max. Cd.)
2 - Horizontal Cone Through Vertical Angle (2.5) (Through Max. Cd.)

POLAR GRAPH



Maximum Candela = 3484 Located At Horizontal Angle = 22.5, Vertical Angle = 2.5
1 - Vertical Plane Through Horizontal Angles (22.5 - 202.5) (Through Max. Cd.)
2 - Horizontal Cone Through Vertical Angle (2.5) (Through Max. Cd.)