



Catalog Number	
Project	Type

FEATURES & SPECIFICATIONS

APPLICATION — The DCL Large Die Cast Area Light is designed for general-purpose area lighting. It is the perfect choice for lighting large open areas for safety and security. Wide roadway applications, parking areas, or even wall mount applications for security lighting are all suitable applications for this fixture. The multiple mounting options make this fixture economical and versatile.

CONSTRUCTION — The housing and door frame are constructed of die cast aluminum. The flat tempered glass lens is sealed in place and a door gasket is provided for weather tight protection. ETL listed for wet locations.

FINISH — A Super Durable Polyester powder coat finish is electrostatically applied in our state of the art paint facility. Standard colors available: Black, Bronze, US Green, White. Custom colors available upon request.

OPTICAL SYSTEM — Made with a state of the art high performance reflectors that use high gloss components to achieve precise photometric distributions. The fixture is a full cut-off light fixture and is Star Light Friendly in the horizontal position only.

ELECTRICAL SYSTEM — Available in 400W thru 1000W standard metal halide, pulse-start metal halide, and high pressure sodium. Comes standard with a 4KV pulse rated mogul base socket. Each 60HZ CWA multi-tap, 480V, or 5-tap ballast is pre-wired and installed for convenience.

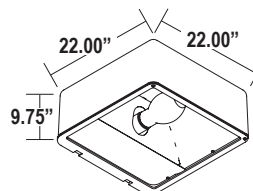
MOUNTING — Standard mounting options include 2", 8" and 10.75" Straight Arms with internal bolt guides for square and round pole mounting on shoe-box models. 2" Adjustable Slip Fitter and Yoke Mount available for floodlight models. Additional mounting options are available.



Large Die Cast Area Light DCL SERIES



Fixture shown with SSA Straight Arm which is ordered separately.



Series	Housing Height	Length & Width	EPA
DCL	9.75"	22.00" x 22.00"	1.64

ORDERING INFORMATION

Choose the bold face options for the appropriate luminaire configuration for your application and enter on the line above each fixture attribute. Accessories may be factory installed, depending on the particular accessory chosen, but still be ordered as a separate line item.

Example: **DCLB1AP1-PS-BZ**

DCLB1					
Series	Reflector	Wattage/Source	Voltage	Pulse-Start	Finish
DCLB1	A Standard Flood D Cutoff Flood H Narrow Parabolic J Medium Parabolic C Type II L Type III B Type IV E Type V	M 250W Metal Halide N 400W Metal Halide Q 750W PS Metal Halide V 775W PS Metal Halide W 875W PS Metal Halide P 1000W Metal Halide G 1000W High Pressure Sodium	1 Multi-Tap ¹ 2 480V 3 5-Tap ²	PS Pulse-Start	BK Black BZ Bronze GR US Green WH White SP Special ³

Accessories (Order as separate line items)

2AF 2" Adjustable Slip Fitter	S110 Large 3 Sided Front Mount Shield
B15 Adjustable Yoke Mount	S111 Large Back Side Shield
SSA-S⁴ 2" Straight Arm	S114 Large 3 Sided Back Side Shield
SSA-M 8" Straight Arm	S120⁵ Large 2 Sided Back Side Shield
SSA 10.75" Straight Arm	S121⁵ Large 2 Sided Front Side Shield
S73 Large Cutoff Shield	S102 Large Vandal Shield
S108 Large 3 Sided Front Mount Visor	S105 Large Wire Guard

NOTES

- Multi-Volt is 120/208/240/277V wired 277V
- 5-Tap is 120/208/240/277/480V wired 480V and is only available in 400W and 1000W Metal Halide wattages.
- Custom RAL color matching is available. Contact your Techlight sale representative for additional information.
- SSA-S Arm cannot be used when pole mounting fixtures at 90° increments.
- S120 and S121 shields must be specified as left or right sided shield from the mounting side point of view.

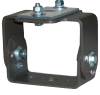
DCL Large Die Cast Area Light

MOUNTING ACCESSORIES

2AF
2" Adjustable Slip Fitter



B15
Adjustable Yoke Mount

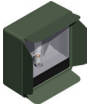


SSA-S¹, SSA-M, SSA
2", 8" and 10.75" Straight Arms

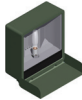


ADDITIONAL FIXTURE ACCESSORIES

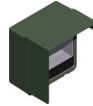
S73
Large Cutoff Shield



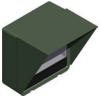
S111
Large Back Side Shield



S121²
Large 2 Sided Front Side Shield



S108
Large 3 Sided Front Mount Visor



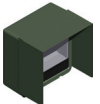
S114
Large 3 Sided Back Side Shield



S102
Large Vandal Shield



S110
Large 3 Sided Front Mount Shield



S120²
Large 2 Sided Back Side Shield



S105
Large Wire Guard



NOTES

- 1 SSA-S Arm cannot be used when pole mounting fixtures at 90° increments.
- 2 S120 and S121 shields must be specified as left or right sided shield from the mounting side point of view.



Techlight, Inc.
2707 Satsuma Drive
Dallas, TX, 75229
Phone: 214-350-0591, 800-225-0727, Fax: 214-350-9137
www.techlight.com