



Catalog Number	
Project	Type

## FEATURES & SPECIFICATIONS

**APPLICATION** — The FRG is a high power LED flood light designed to perform and built to last. High performance optics maximize light intensity to provide consistent and uniform light patterns for a multitude of commercial, industrial or residential lighting applications.

**CONSTRUCTION** — The heavy duty housing is constructed of diecast aluminum. The optical assemblies are sealed in place using a silicone gasket for weather tight protection. Sealed wireway with anti-siphon leads.

**FINISH** — A Super Durable Polyester powder coat finish is electrostatically applied in our state of the art paint facility. Standard colors available: Black, Bronze, US Green, White. Custom colors available upon request.

**OPTICAL SYSTEM** — Made with a state of the art UV stabilized acrylic high performance refractive optical assemblies that use high transmissivity materials to achieve precise photometric distributions. Available in Type V Narrow, V Medium, and V Wide, and NSP beam configurations.

**ELECTRICAL SYSTEM** — Available in 5000K-70 CRI Cool White (+/- 500K) or 4000K-70 CRI Neutral White color temperatures propagated with CREE® XLamp XHP70 LED's. Available with 100-300V 50/60 Hz Class II power supply. LED's rated for over 50,000 hours at 25°C ambient temperature. 347V~480V input option available. 0-10V dimming. Built-in surge protection up to 10 kV. Built-in Active PFC Function >95%/ Full load. LED Power Supply conforms to UL8750 standards and is IP65 rated for wet locations. 0-10V dimming standard.

# FRG-XHP

## High Lumen LED Power Floodlight



SERIES	HOUSING HEIGHT	LENGTH & WIDTH	EPA	WEIGHT
<b>FRG</b>	7.375"	9.375" x 7.65"	0.6	13 lbs

**MOUNTING** — Standard mounting option available is a 3/4" threaded knuckle mount or adjustable yoke mount. A tenon mount adaptor is available for mounting onto a 2-3/8" OD tenon (see Accessories).

**LISTINGS** — ETL Listed. Suitable for wet locations. Meets US and Canadian safety standards. -40°C to 50°C ambient operation. RoHS Compliant.

**WARRANTY** — The complete luminaire is covered by a 5-year limited warranty.

## ORDERING INFORMATION

Choose the bold face options for the appropriate luminaire configuration for your application and enter on the line above each fixture attribute. Accessories may be factory installed, depending on the particular accessory chosen, but still be ordered as a separate line item.

EXAMPLE:

**FRG6CXT5ND1BZ**

SERIES	# OF BOARDS	COLOR TEMP	# OF LEDS	OPTICS	DRIVE CURRENT	VOLTAGE	MOUNTING	FINISH
<b>FRG</b>	<b>1</b> = 1 Board	<b>C</b> = Cool White (5000K) <b>N</b> = Neutral White (4000K)	<b>X</b> = 8 XHP70 LEDs	<b>T5N</b> = Type V Narrow <b>T5M</b> = Type V Medium <b>T5W</b> = Type V Wide <b>NSP</b> = Narrow Spot	<b>F</b> = 1400 mA <b>G</b> = 1750 mA	<b>1</b> = Multi-Volt <sup>1</sup>	<b>AM</b> = 3/4" Adjustable knuckle <b>YM</b> = Yoke Mount	<b>BZ</b> = Bronze <b>BK</b> = Black <b>GR</b> = US Green <b>WH</b> = White <b>SP</b> = Special <sup>2</sup>

## ACCESSORIES (Order as separate line items)

- FRG3SS** Three Sided Shield
- FRG4SS** Four Sided Shield
- P1000PC** Button Type Photocell 120V (1000w)
- PC3** Button Type Photocell 208/277V (1200w)
- TA34T238** Tenon Adaptor for 2-3/8" OD Tenon (for use with adjustable knuckle only)

## NOTES

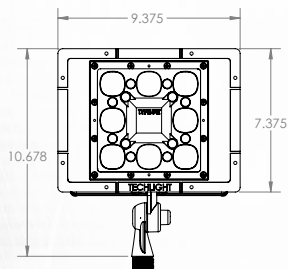
- 1= Multi-Volt is an auto ranging power supply from 100V to 300V input.
- 2= Custom RAL color matching is available. Contact your sales representative for additional info.



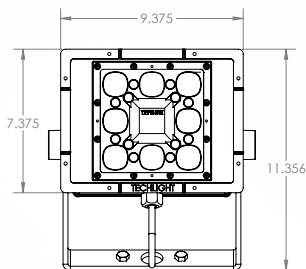
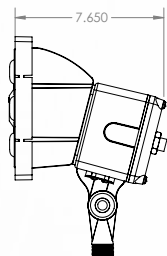
# FRG-XHP High Lumen LED Power Floodlight

## AVAILABLE FIXTURE DIMENSIONS

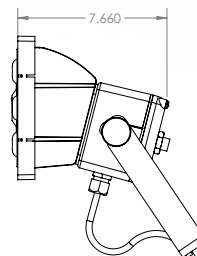
Dimensions shown are for fixture bodies only. Mounting options must be ordered separately.



3/4" - 14 NPS Male Thread Arm

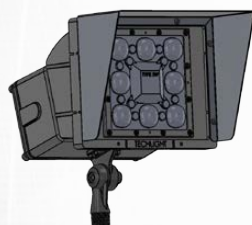


1-1/2" X 1/4" Thick formed aluminum yoke bracket

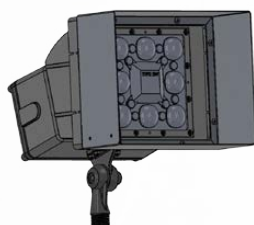


## FIXTURE & MOUNTING ACCESSORIES

**FRG3SS**  
Three Sided Shield



**FRG4SS**  
Four Sided Shield



**TA34T238**  
Tenon Adaptor for 2-3/8" OD Tenon



**P1000PC**  
Button-Type Photocell



## LUMINAIRE CHARACTERISTICS

### 1400 mA Drive Current

# of LED Bricks	Drive Current	Color Temp				System Wattage	L70 @ 25°C	Amperage Draw			
			TYPE 5N	TYPE 5M	TYPE 5W			120V	208V	240V	277V
1 BRICK	1400 mA	Cool White (5000K)	18165	18352	16474	140	>50K	1.17 A	0.68 A	0.59 A	0.51 A
			B5 U0 G1	B4 U0 G1	B4 U0 G2						
1 BRICK	1400 mA	Neutral White (4100K)	18165	18352	16474	140	>50K	1.17 A	0.68 A	0.59 A	0.51 A
			B5 U0 G1	B4 U0 G1	B4 U0 G2						

### 1750 mA Drive Current

# of LED Bricks	Drive Current	Color Temp				System Wattage	L70 @ 25°C	Amperage Draw			
			TYPE 5N	TYPE 5M	TYPE 5W			120V	208V	240V	277V
1 BRICK	1750 mA	Cool White (5000K)	21501	21740	19515	176	>50K	1.47 A	0.85 A	0.74 A	0.64 A
			B5 U0 G1	B4 U0 G1	B4 U0 G2						
1 BRICK	1750 mA	Neutral White (4100K)	21501	21740	19515	176	>50K	1.47 A	0.85 A	0.74 A	0.64 A
			B5 U0 G1	B4 U0 G1	B4 U0 G2						

**WARNING:** Maintenance performed including the replacement of LED bricks while power is still supplied to the luminaire may result in system failures and will void the warranty.



**TECHLIGHT**  
INNOVATION IN ILLUMINATION

2707 SATSUMA | DR. DALLAS, TX 75229 | PH: 800.225.0727 | FX: 214.350.0591 | [www.techlight.com](http://www.techlight.com)

\*\*All dimensions and specifications are subject to change without notice.\*\*

REV: 20200114-02