



LSMT

SCIMITAR SERIES HIGH LUMEN OUTPUT LED AREA LIGHTS

HIGH DEFINITION LIGHTING

The Scimitar Ultra High Lumen Output LED Area Light is the “go to” LED light fixture to replace existing high wattage systems. Where other LED fixtures on the market fail to deliver the light levels needed for high output applications, the Scimitar surpasses traditional lighting solutions and leads the LED market in output.

The state of the art optical assemblies are available in the all of the standard NEMA beam configurations as well as specialty selections for automotive and tennis specific applications. “High Definition” performance is delivered by providing light as close to natural daylight as possible. By mimicking natural daylight, colors will appear crisper for retail applications such as auto dealerships and visual acuity will be enhanced for active sports applications such as tennis or pickleball courts.

The Scimitar has been tested in an independent laboratory to LM79 and LM80 test standards and is RoHS compliant. The long life LED’s are rated for over 50,000 hours of life and the luminaire is backed by a 5-Year Limited Warranty.

Additional innovative, high performance products such as the Scimitar can be found at www.techlight.com.



TECHLIGHT
INNOVATION IN ILLUMINATION



ORDERING INFORMATION

Choose the bold face options for the appropriate luminaire configuration for your application and enter on the line above each fixture attribute. Accessories may be factory installed, depending on the particular accessory chosen, but still be ordered as a separate line item.

EXAMPLE: **LSMT 6 C 130L T4A 1 BZ**

SERIES

LSMT Scimitar Ultra-High Lumen Output LED Area Light

NUMBER OF LED MODULES

2 2 Modules
4 4 Modules
6 6 Modules

(See performance data for Delivered Lumens)

COLOR TEMPERATURE

C Cool White 5000K
N Neutral White 4000K
W Warm White 3000K

NOMINAL LUMENS

NOMINAL LUMENS	
2 MODULE UNIT	23L = 23,000 Lumens
	25L = 25,000 Lumens
	28L = 28,000 Lumens
	30L = 30,000 Lumens
	33L = 33,000 Lumens
	35L = 35,000 Lumens
	38L = 38,000 Lumens
4 MODULE UNIT	40L = 40,000 Lumens
	43L = 43,000 Lumens
	45L = 45,000 Lumens
	50L = 50,000 Lumens
	55L = 55,000 Lumens
	60L = 60,000 Lumens
	65L = 65,000 Lumens
6 MODULE UNIT	70L = 70,000 Lumens
	75L = 75,000 Lumens
	80L = 80,000 Lumens
	85L = 85,000 Lumens
	90L = 90,000 Lumens
	95L = 95,000 Lumens
	100L = 100,000 Lumens
110L = 110,000 Lumens	
120L = 120,000 Lumens	
130L = 130,000 Lumens	



OPTICS

T2 Type II
T3 Type III
T4 Type IV
T4A Type IV Automotive
FAW Frontline Automotive Wide
T4T Type IV Tennis
T5N Type V Narrow
T5M Type V Medium
T5W Type V Wide

VOLTAGE

1 Multi-Volt (100~300V input)
2 347~480V

OPTIC ROTATION (Leave Blank for standard optics)

L Left Rotated Optics
R Right Rotated Optics

FINISH

BK Black
BZ Bronze
GR US Green
WH White
SP Special

FACTORY INSTALLED OPTIONS (Ordered Separately)

BTEC = Integrated Bluetooth Control Module Casambi Ready Mesh Network

PC2 = 480V Twist-Lock Photocell

PC6 = Multi-Tap (105-285V) Twist-Lock Photocell

PCR7 = 7-Pin Twist-Lock Photocell Receptacle ANSI C136.41 and Receptacle Shorting Cap

IP66 = Additional IP66 Fixture Rating

(IMS) TLWSFSP-211 = Fixture Mount Passive Infrared Motion Sensor **(IMS Lenses Below, Ordered Separately)**

TLWSFSP-L3 = 360° lens, maximum coverage 40' diameter from 20' height **(IMS)**

TLWSFSP-L7 = 360° lens, maximum coverage 100' diameter from 40' height **(IMS)**

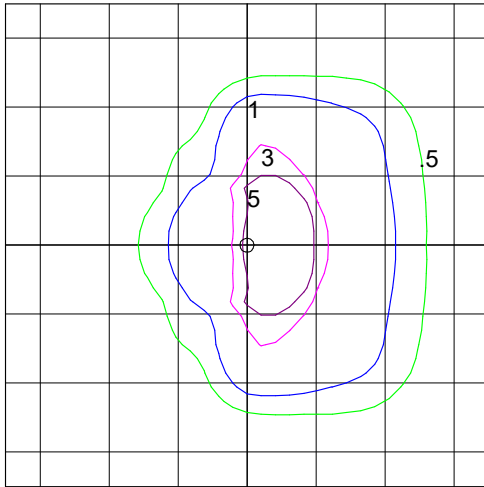


PHOTOMETRICS

Mounting Height = 25ft

IES INDOOR REPORT
PHOTOMETRIC FILE
NAME:
LSMT 2 C 25L T3

Type III Optical Assembly
2 Module, Cool White

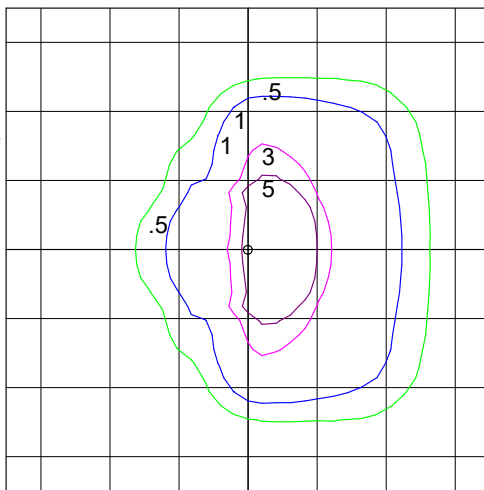


T3 Optics:

Mounting Height = 40ft

IES INDOOR REPORT
PHOTOMETRIC FILE
NAME:
LSMT 4 C 70L T3

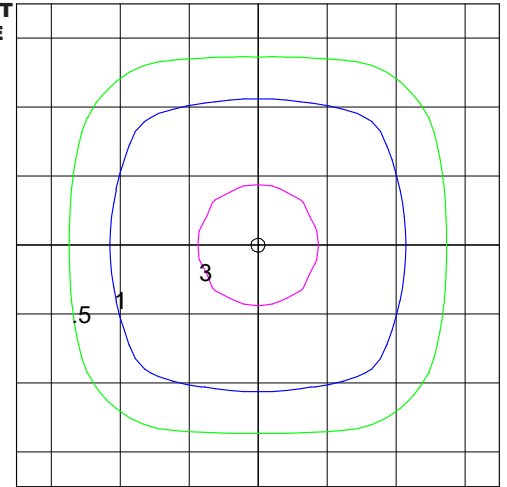
Type III Optical Assembly
4 Module, Cool White



Mounting Height = 25ft

IES INDOOR REPORT
PHOTOMETRIC FILE
NAME:
LSMT 2 C 30L T5W

Type V Wide Optical
Assembly
2 Module, Cool White



T5W Optics:

Mounting Height = 40ft

IES INDOOR REPORT
PHOTOMETRIC FILE
NAME:
LSMT 6 C 95L T5W

Type V Wide Optical
Assembly
6 Module, Cool White

