



Catalog Number	
Project	Type

Features & Specifications

Application

Designed for under cabinet mounting.

Features

Optimized for T8 or T5 lamp performance. Snap together body and ballast cover. No fasteners required. Ribbed white acrylic diffuser.

Construction

Fixture housing, lampholder brackets, end sections and channel cover constructed of code-gauge, die-formed steel.

Electrical System

ETL listed. Suitable for damp locations. Damp location emergency pack must be specified separately. Ballasts are solid-state electronic. Ballasts and lamp holders are replaceable without removing from ceiling. Discrete voltage must be specified for emergency pack options when wired with flex. Comes standard with ballast disconnects for safe maintenance.

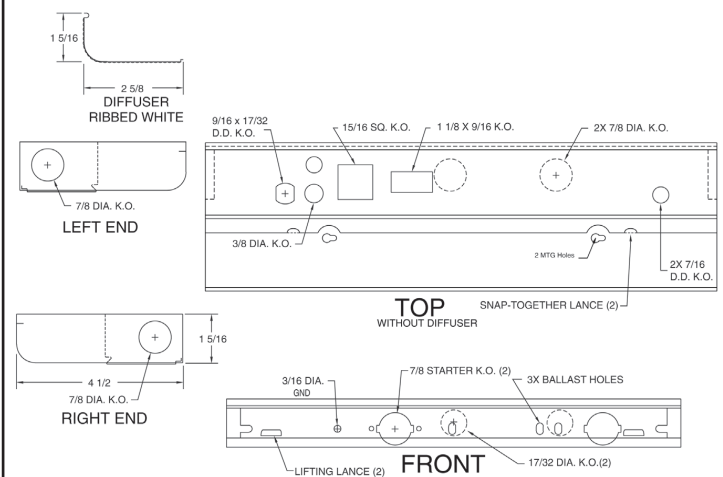
Finish

All reflective surfaces are finished with a high reflectance, lighting fixture white polyester powder.

UC23 SERIES UNDER CABINET 23



DIMENSIONS



Please contact your Horizon Sales Representative for more information.
All dimensions subject to change without notice.

Ordering Nomenclature

Ex: (Under Cabinet 23, 1 Lamp, F17T8, 24", 120V = UC23117241)

--	--	--	--	--	--	--

SERIES	NUMBER OF LAMPS	WATTAGE	LENGTH	VOLTAGE	BALLAST FACTOR	OPTIONS
UC23	1	08 - 8 watt T5 (12")	12"	D - Multi-Volt	BLANK - Normal	10RS - ≤10% THD, Rapid Start
		13 - 13 watt T5 (21")	18"	1 - 120V	H - High	P - Program Start
		0813 - 8 & 13 watt T5 (33")	21"	2 - 277V	L - Low	20 - ≤20% THD
		15 - 15 watt T8 (18")	24"	3 - 347V		EB5 - 500 Lumen Emergency Ballast
		17 - 17 watt T8 (24")	33"	4 - 480V		EB7 - 700 Lumen Emergency Ballast
		32 - 32 watt (48")	42"			EB14 - 1400 Lumen Emergency Ballast
		*CFL - SPECIAL ORDER	48"			EB30 - 3000 Lumen Emergency Ballast
						EB5T5 - 500 Lumen T5 Emergency Ballast
						EB7T5 - 700 Lumen T5 Emergency Ballast
						EB14T5 - 1400 Lumen T5 Emergency Ballast
						FBF - Fast-Blow Fuse
						SBF - Slow-Blow Fuse
						PC - Pull Chain
						RS - Rocker Switch